

FORT POLK, LOUISIANA

RNAV (GPS) RWY 34

APCH CRS 338°	Rwy ldg 4107
	THRE 278
	Arprt Elev 330

AL-5096 [USA]

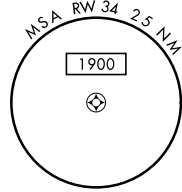
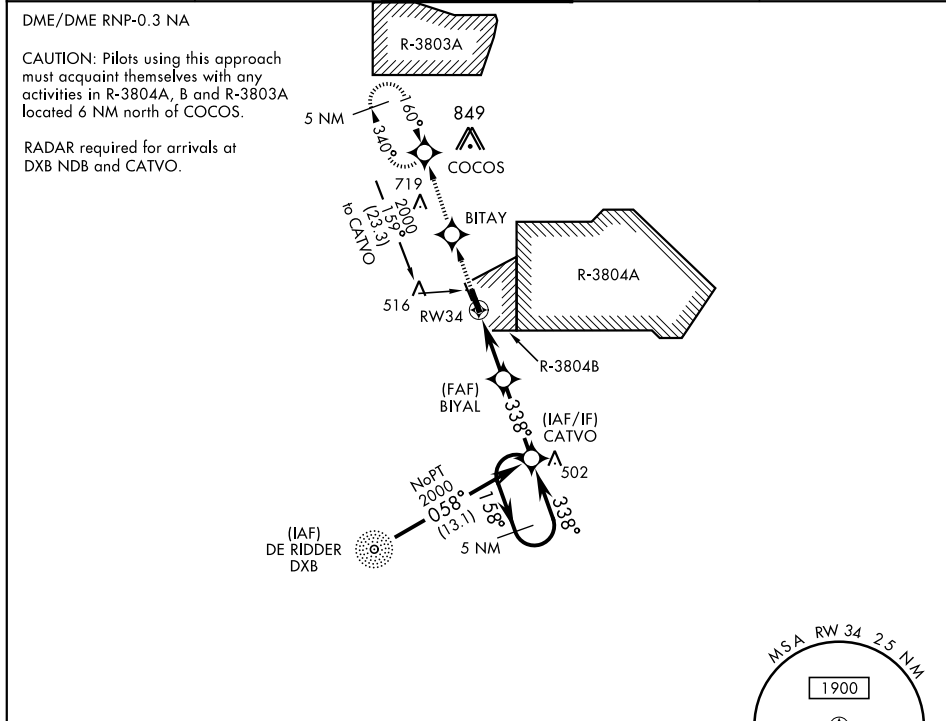
POLK AAF (KPOE)

▼ * When ALS inop, increase CAT AB vis to 1 mile, CAT CD vis to 1 1/2 mile.

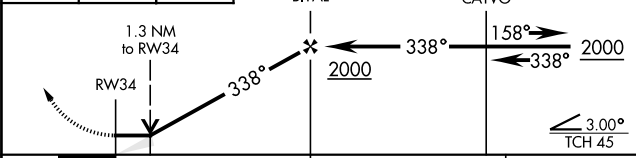
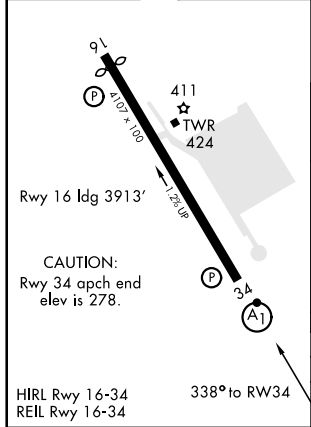


MISSED APPROACH: Climb to 2000 direct BITAY and on track 340° to COCOS and hold.

ATIS 134.85 282.2	POLK APP CON 123.7 261.3	POLK TOWER 119.0 257.75	GND CON 121.8 239.25	ASR/PAR
-----------------------------	------------------------------------	-----------------------------------	--------------------------------	---------



ELEV 330	THRE 278
----------	----------



CATEGORY	A	B	C	D
LNVA MDA*	760-3/4 482 (500-3/4)	760-1 482 (500-1)	820-1 1/2 880-2	880-2 550 (600-2)
CIRCLING	820-1 490 (500-1)	820-1 1/2 490 (500-1 1/2)	880-2 550 (600-2)	

FORT POLK, LOUISIANA
Amdt 1A 26MAR20

31° 03' N-93° 11' W

POLK AAF (KPOE)

RNAV (GPS) RWY 34

SC-4, 25 FEB 2021 to 25 MAR 2021

SC-4, 25 FEB 2021 to 25 MAR 2021