

# RNAV (GPS) RWY 16

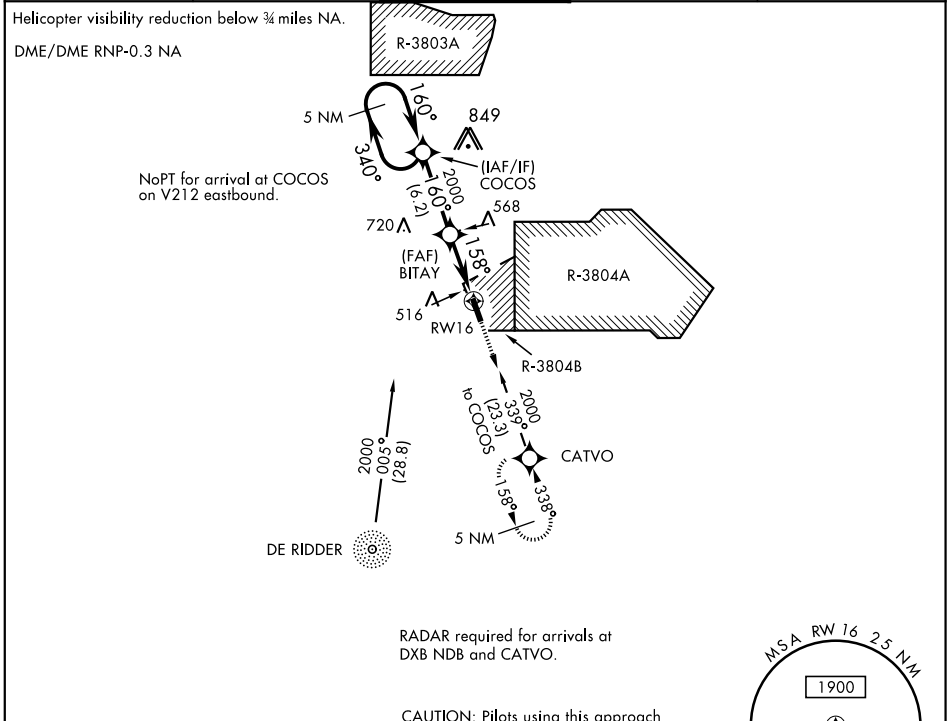
APCH CRS	Rwy ldg	<b>3913</b>
<b>158°</b>	THRE	<b>328</b>
	Arprt Elev	<b>330</b>

AL-5096 [USA]

POLK AAF (KPOE)

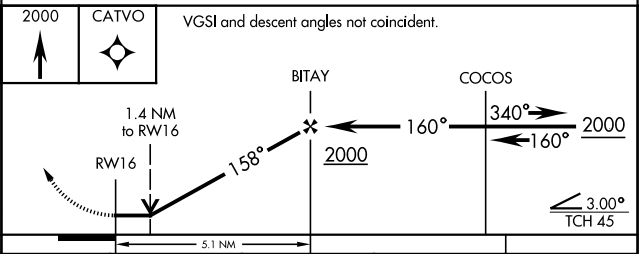
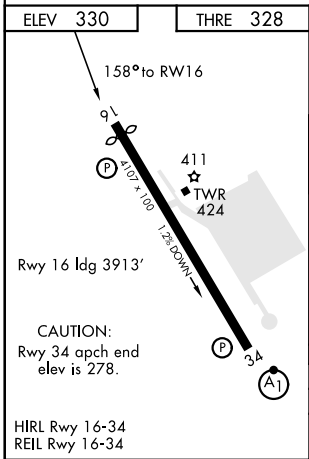
**▽** MISSED APPROACH: Climb to 2000 direct CATVO and hold.

ATIS <b>134.85 282.2</b>	POLK APP CON <b>123.7 261.3</b>	POLK TOWER <b>119.0 257.75</b>	GND CON <b>121.8 239.25</b>	ASR/PAR
-----------------------------	------------------------------------	-----------------------------------	--------------------------------	---------



RADAR required for arrivals at DXB NDB and CATVO.

CAUTION: Pilots using this approach must acquaint themselves with any activities in R-3804A, B and R-3803A located 6 NM north of COCOS.



CATEGORY	A	B	C	D
LNAY MDA	800-1 472 (500-1)	800-1 3/8 472 (500-1 3/8)	820-1 1/2 880-2	880-2 550 (600-2)
CIRCLING	820-1 490 (500-1)	820-1 1/2 490 (500-1 1/2)	880-2 550 (600-2)	

# RNAV (GPS) RWY 16

SC-4, 25 FEB 2021 to 25 MAR 2021

SC-4, 25 FEB 2021 to 25 MAR 2021