

TACAN RWY 23

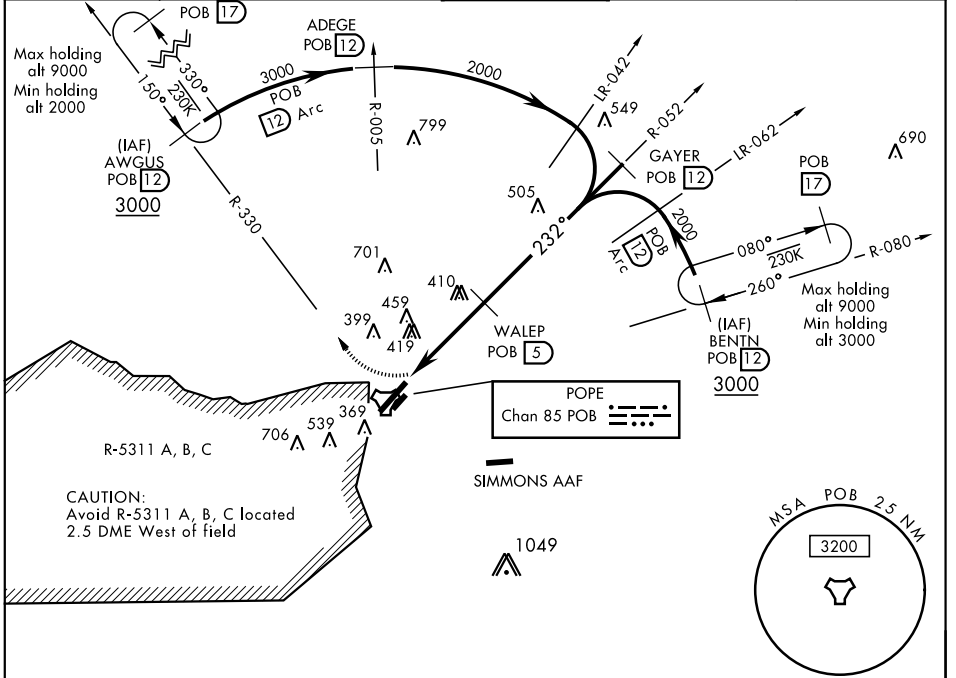
TACAN POB Chan 85	APCH CRS 232°	Rwy ldg TDZE Arprt Elev 7501 200 218	AL-147 [USAF]	POPE AAF (KPOB)
-----------------------------	-------------------------	--	---------------	-----------------

V * When ALS inop, increase CAT AB RVR to 55 and vis to 1 mile, CAT CD vis to 1 3/8 miles.
 ** Circling not authorized SE of Rwy 5-23.

ALSF-1
A1

MISSED APPROACH: Climbing right turn to 2000 direct AWGUS and hold.

ATIS 132.3 353.725	FAYETTEVILLE APP CON 125.175 285.575 (271°- 090°) 133.0 290.25 (091°- 270°)	POPE TOWER 135.025 291.1	GND CON 124.55 275.8	CLNC DEL 275.8
------------------------------	---	------------------------------------	--------------------------------	--------------------------

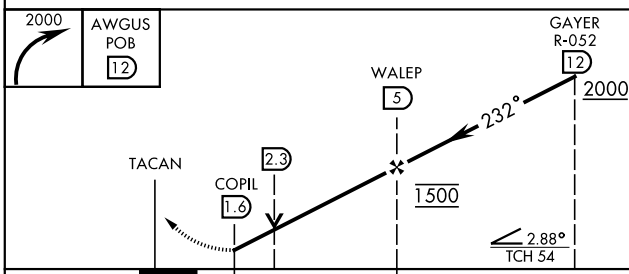


SE-2, 25 FEB 2021 to 25 MAR 2021

SE-2, 25 FEB 2021 to 25 MAR 2021

RADAR REQUIRED

EMERG SAFE ALT 100 NM 5300



ELEV 218	TDZE 200
----------	----------

Rwy 05 ldg 7501'
Rwy 23 ldg 7501'

232° to TACAN

310

8601 x 150

2.88 LRP

2730°

ASSAULT STRIP

TWR 338

280

3000 x 80

280

280

REIL Rwy 5
HIRL Rwy 5-23
LIRL Rwy 050°- 230°

CATEGORY	A	B	C	D
S-23 *	700/24 500 (500-1/2)		700/50 500 (500-1)	
** CIRCLING	760-1 542 (600-1)		920-2 702 (800-2)	1060-2 842 (900-2 3/4)