

ILS or LOC Y RWY 23

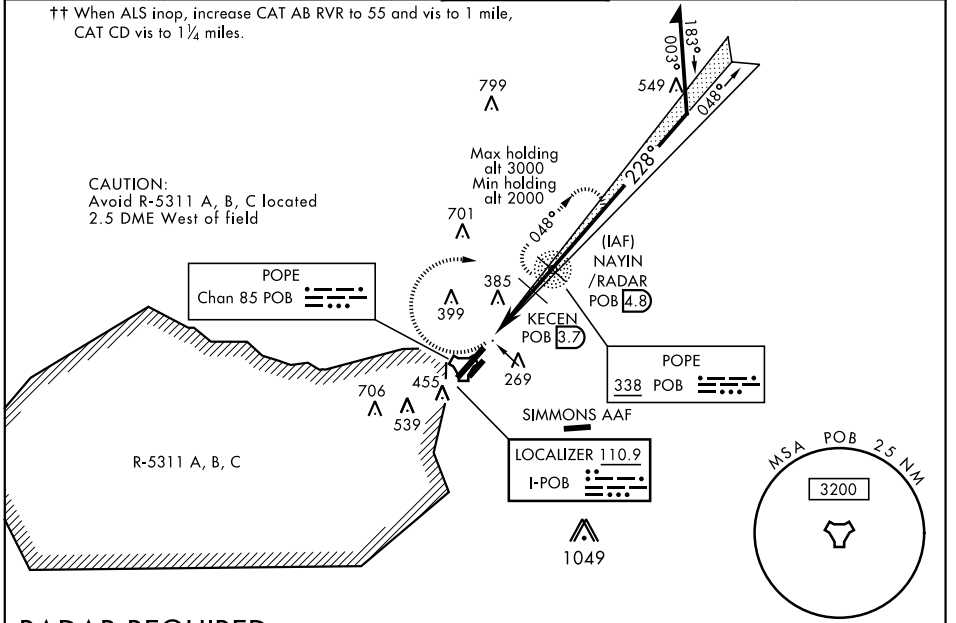
LOC I-POB 110.9	APCH CRS 228°	Rwy ldg TDZE Arprt Elev 7501 200 218	AL-147 [USAF]	POPE AAF (KPOB)
---------------------------	-------------------------	--	---------------	-----------------

▼ * When ALS inop, increase RVR to 40 and vis to 3/4 mile.
 ** When ALS inop, increase CAT AB RVR to 55 and vis to 1 mile, CAT CD RVR to 60, vis to 1 1/8 miles.
 *** Circling not authorized SE of Rwy 5-23.

ALSF-1
 MISSED APPROACH: Climbing right turn to 2000 direct POB NDB and hold. Continue climb in hold to 2000.

ATIS 132.3 353.725	FAYETTEVILLE APP CON 125.175 285.575 (271° - 090°) 133.0 290.25 (091° - 270°)	POPE TOWER 135.025 291.1	GND CON 124.55 275.8	CLNC DEL 275.8
------------------------------	---	------------------------------------	--------------------------------	--------------------------

†† When ALS inop, increase CAT AB RVR to 55 and vis to 1 mile, CAT CD vis to 1 1/4 miles.

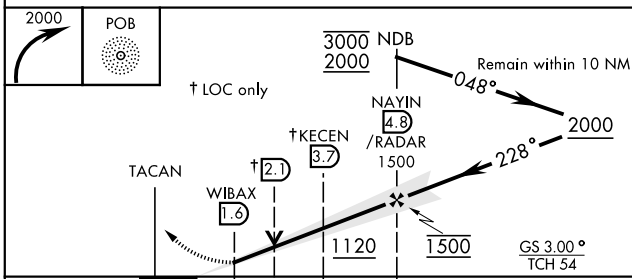


SE-2, 25 FEB 2021 to 25 MAR 2021

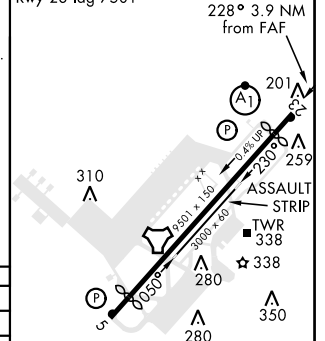
SE-2, 25 FEB 2021 to 25 MAR 2021

RADAR REQUIRED

EMERG SAFE ALT 100 NM 5300 FROM "POB" TACAN



ELEV 218	TDZE 200
Rwy 5 ldg 7501'	
Rwy 23 ldg 7501'	



CATEGORY	A	B	C	D
S-ILS 23 *	400/24		200	(200-1/2)
S-LOC 23 **	620/24	420 (500-1/2)	620/40	420 (500-3/4)
C CIRCLING ***	760-1	542 (600-1)	920-2 702 (800-2)	1060-2 3/4 842 (900-2 3/4)
WITHOUT LAST STEPDOWN FIX				
S-LOC 23 ††	640/24	440 (500-1/2)	640/45	440 (500-7/8)

REIL Rwy 5					
HIRL Rwy 5-23					
LIRL Rwy 050° - 230°					
FAF to MAP 3.2 NM					
Knots	60	90	120	150	180
Min:Sec	3:12	2:08	1:36	1:17	1:04

ILS or LOC Y RWY 23