

WAAS CH <b>50308</b> <b>W24A</b>	APP CRS <b>241°</b>	Rwy Idg <b>5000</b> TDZE <b>666</b> Apt Elev <b>666</b>
--	------------------------	---

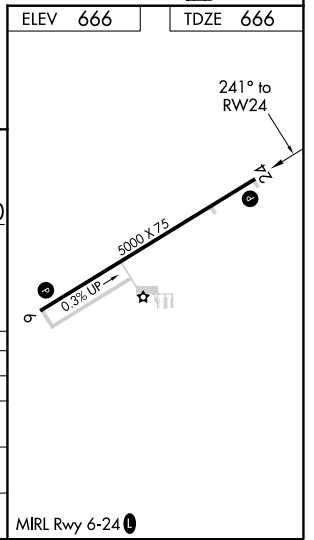
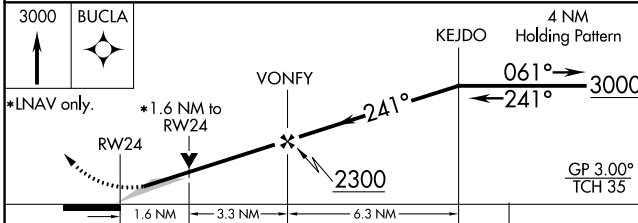
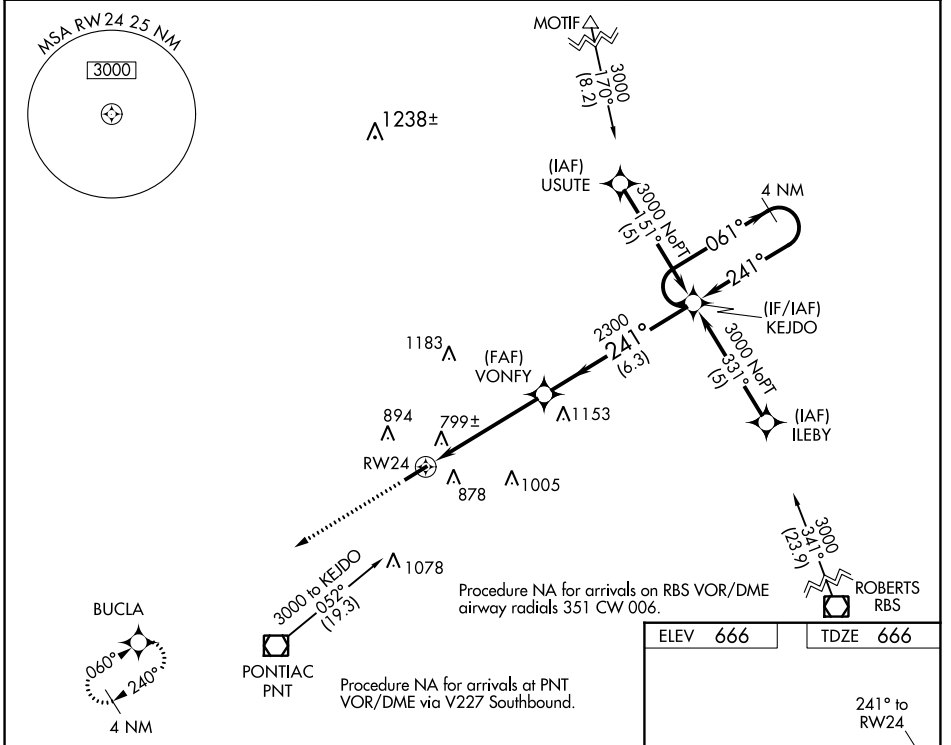
# RNAV (GPS) RWY 24

PONTIAC MUNI (PNT)

**⚠** DME/DME RNP-0.3 NA. For uncompensated Baro-VNAV systems, LNAV/VNAV NA below -16°C (4°F) or above 54°C (130°F). When local altimeter setting not received, use Bloomington/Normal altimeter setting and increase all DA 98 feet and all MDA 100 feet, and increase LPV all Cats, LNAV/VNAV all Cats, LNAV and Circling Cat C visibility ¼ mile. Baro-VNAV and VDP NA when using Bloomington/Normal altimeter setting.

**MISSED APPROACH:**  
Climb to 3000 direct BUCLA and hold.

AWOS-3 <b>119.675</b>	CHICAGO CENTER <b>123.75 259.1</b>	UNICOM <b>123.075 (CTAF) 0</b>
--------------------------	---------------------------------------	-----------------------------------



CATEGORY	A	B	C	D
LPV DA	916-1		250 (300-1)	NA
LNAV/VNAV DA	1139-1¾		473 (500-1¾)	NA
LNAV MDA	1220-1	554 (600-1)	1220-1½ 554 (600-1½)	NA
CIRCLING	1220-1	554 (600-1)	1220-1½ 554 (600-1½)	NA

EC-3, 25 FEB 2021 to 25 MAR 2021

EC-3, 25 FEB 2021 to 25 MAR 2021

MIRL Rwy 6-24 0