

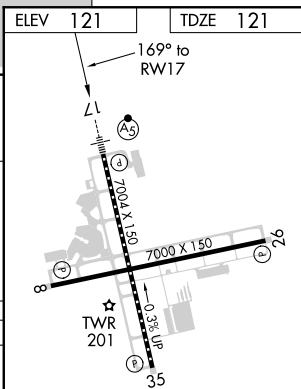
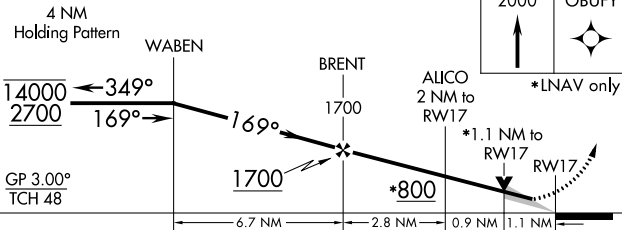
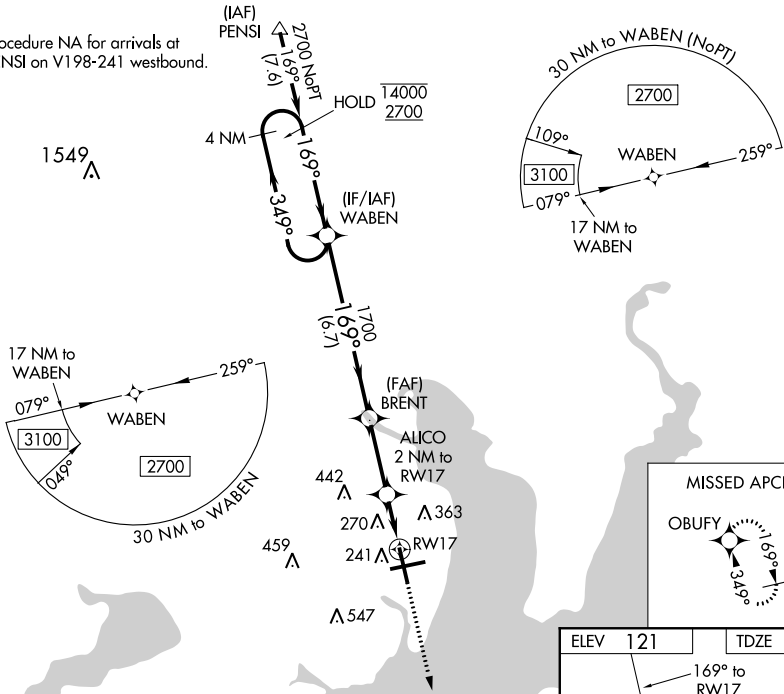
WAAS CH 97319 W17A	APP CRS 169°	Rwy Idg TDZE Apt Elev	7004 121 121
--	------------------------	-----------------------------	---

RNAV (GPS) RWY 17

PENSACOLA INTL (PNS)

RNP APCH.		MALSR MISSED APPROACH: Climb to 2000 direct OBUFY and hold.	
For uncompensated Baro-VNAV systems, LNAV/VNAV NA below 1°C or above 54°C. CAUTION: Intensive VFR student training in vicinity of airport.			
ATIS 121.25	PENSACOLA APP CON 119.0 269.375	PENSACOLA TOWER ★ 119.9 (CTAF) 0 257.8	GND CON 121.9 348.6
		CLNC DEL 123.725 256.875	UNICOM 122.95

Procedure NA for arrivals at PENSI on V198-241 westbound.



CATEGORY	A	B	C	D
LPV DA		321/18	200 (200-½)	
LNAV/VNAV DA		542/40	421 (500-¾)	
LNAV MDA	520/24	399 (400-½)	520/35	399 (400-¾)
CIRCLING	580-1 459 (500-1)	680-1 559 (600-1)	680-1½ 559 (600-1½)	680-2 559 (600-2)

SE-3, 25 FEB 2021 to 25 MAR 2021

SE-3, 25 FEB 2021 to 25 MAR 2021