

WAAS CH 65622 W06A	APP CRS 060°	Rwy Idg TDZE Apt Elev	7000 116 120
---------------------------------	------------------------	-----------------------------	---

RNAV (GPS) RWY 6

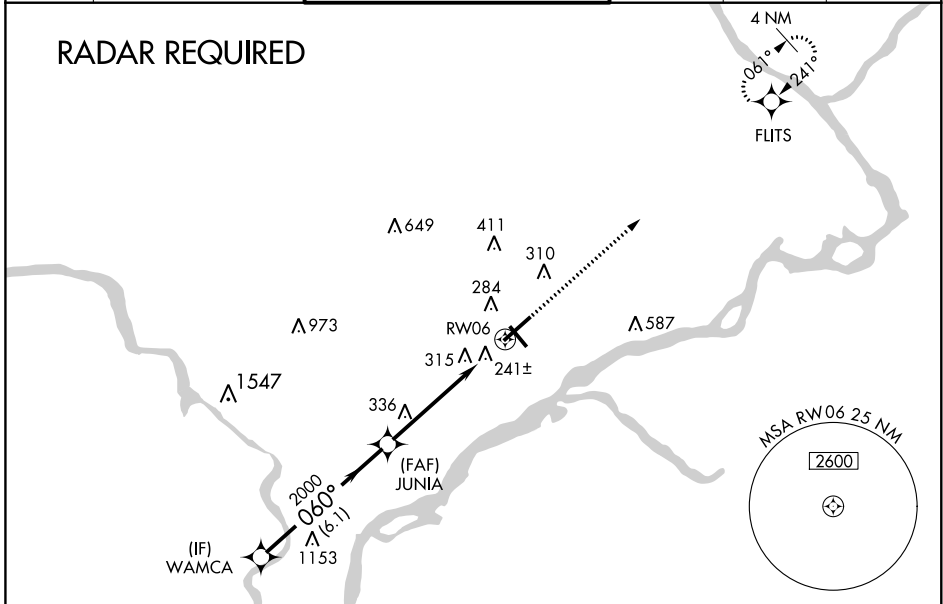
NORtheast PHILADELPHIA (PNE)

⚠ For uncompensated Baro-VNAV systems, LNAV/VNAV NA below -15°C (5°F) or above 48°C (118°F). DME/DME RNP-0.3 NA. When local altimeter setting not received, use Philadelphia Intl altimeter setting and increase all DA 50 feet and all MDA 60 feet; increase LPV all Cats, LNAV/VNAV all Cats, and LNAV Cat C/D visibility ¼ mile. Helicopter visibility reduction below ¾ SM NA. VDP and Baro-VNAV NA when using Philadelphia Intl altimeter setting.

MISSED APPROACH:
Climb to 3000 direct FLITS and hold.

ATIS 121.15	PHILADELPHIA APP CON 123.8 291.7	NORtheast PHILADELPHIA TOWER * 126.9 (CTAF) 278.8	GND CON 121.7	CLNC DEL 127.25	UNICOM 122.95
-----------------------	--	---	-------------------------	---------------------------	-------------------------

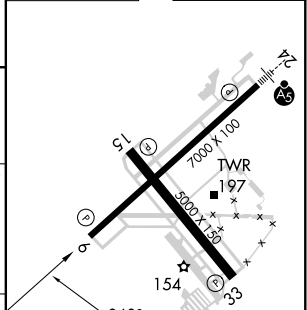
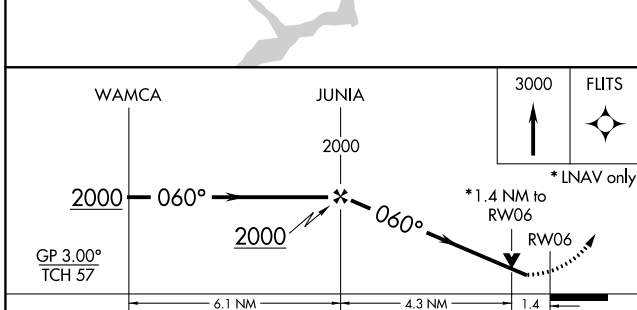
RADAR REQUIRED



NE-4, 25 FEB 2021 to 25 MAR 2021

NE-4, 25 FEB 2021 to 25 MAR 2021

ELEV 120	TDZE 116
----------	----------



CATEGORY	A	B	C	D
LPV DA		490-1¼	374 (400-1¼)	
LNAV/VNAV DA		540-1½	424 (500-1½)	
LNAV MDA	600-1	484 (500-1)	600-1¼ 484 (500-1¼)	600-1½ 484 (500-1½)
CIRCLING	700-1	580 (600-1)	700-1½ 580 (600-1½)	700-2 580 (600-2)

HIRL Rwy 6-24
MIRL Rwy 15-33
REIL Rwy 6, 15 and 33