

WAAS CH <b>45907</b> <b>W18A</b>	APP CRS <b>183°</b>	Rwy Idg TDZE Apt Elev	<b>5001</b> <b>663</b> <b>663</b>
--	------------------------	-----------------------------	---

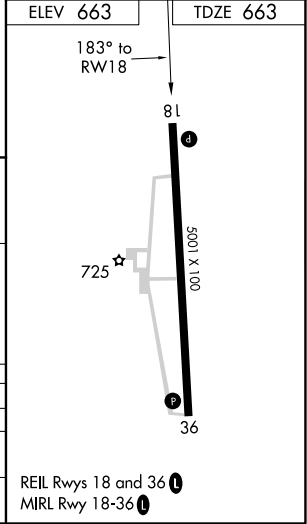
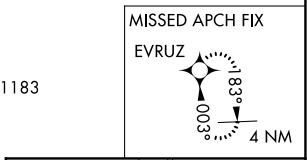
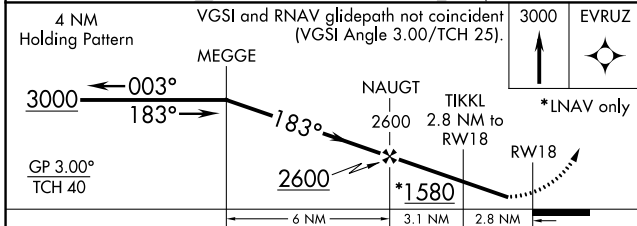
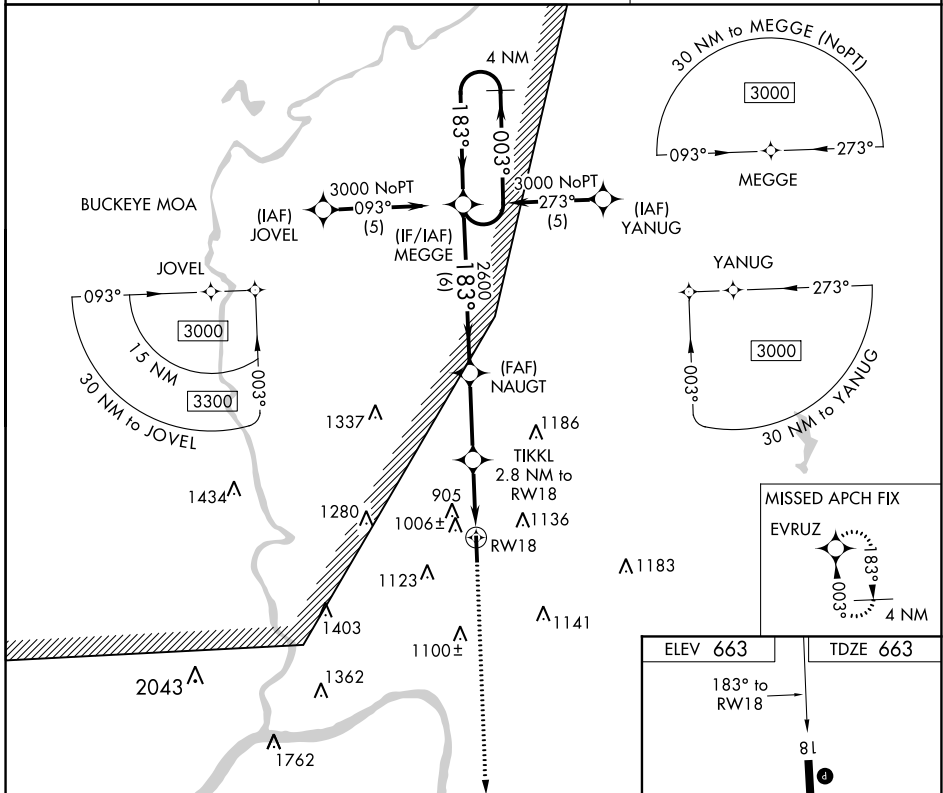
# RNAV (GPS) RWY 18

GREATER PORTSMOUTH RGNL (PMH)

**▽** DME/DME RNP-0.3 NA. Visibility reduction by helicopters NA.  
**△ NA** When local altimeter setting not received, use Huntington altimeter setting and increase all DA 96 feet and all MDA 100 feet and LPV visibility ¼ mile all Cats, LNAV Cat C, D visibility ½ mile and Circling Cat B, D visibility ¼ mile, Cat C visibility ½ mile.

**MISSED APPROACH:**  
 Climb to 3000 direct EVRUZ and hold.

AWOS-3 <b>125.175</b>	HUNTINGTON APP CON <b>128.4 270.1</b>	UNICOM <b>122.8 (CTAF) ①</b>
--------------------------	--	---------------------------------



CATEGORY	A	B	C	D
LPV DA	1010-1¼ 347 (400-1¼)			
LNAV MDA	1260-1 597 (600-1)	1260-1½ 597 (600-1½)	1260-1¾ 597 (600-1¾)	
CIRCLING	1320-1 657 (700-1)	1380-1 717 (800-1)	1380-2 717 (800-2)	1440-2½ 777 (800-2½)

REIL Rwy 18 and 36 ①  
 MIRL Rwy 18-36 ①

EC-2, 25 FEB 2021 to 25 MAR 2021

EC-2, 25 FEB 2021 to 25 MAR 2021