

VORTAC PLN 111.8 Chan 55	APP CRS 245°	Rwy Idg 5395 TDZE 721 Apt Elev 721
---------------------------------------	------------------------	---

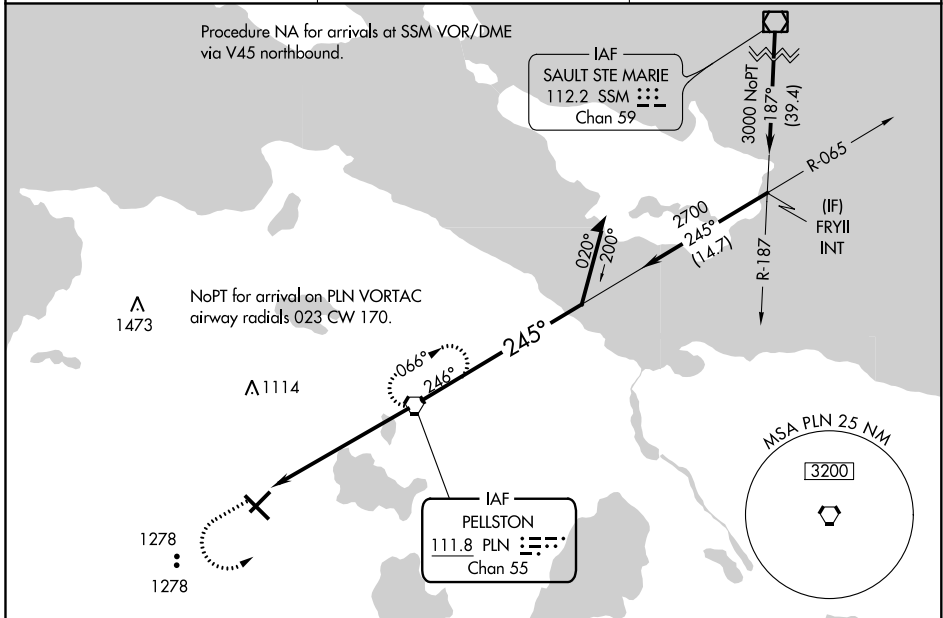
VOR RWY 23

PELLSTON RGNL AIRPORT OF EMMET COUNTY (PLN)

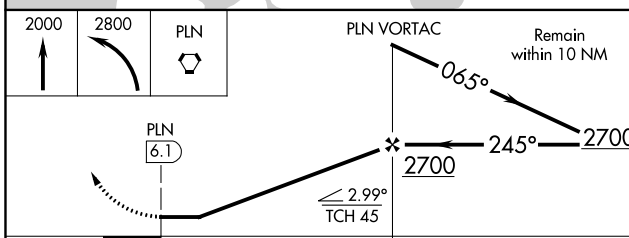
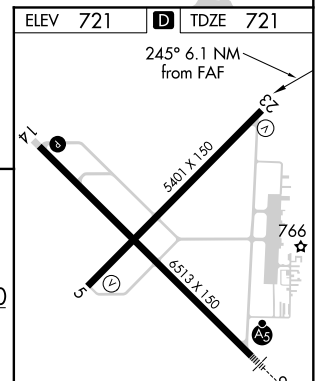
⚠ When local altimeter setting not received, use Harbor Springs altimeter setting and increase all MDA 40 feet. Increase all Cat C and S-23 Cat D visibility ¼ mile. Rwy 23 helicopter visibility reduction below 1 SM NA. Straight-in Rwy 23 NA at night, Circling Rwy 5, 23 NA at night.

⚠ MISSED APPROACH: Climb to 2000 then climbing left turn to 2800 direct PLN VORTAC and hold.

ASOS 119.025	MINNEAPOLIS CENTER 134.6 354.05	UNICOM 123.0 (CTAF) 1
------------------------	---	---------------------------------



ELEV 721	D TDZE 721
----------	-------------------



CATEGORY	A	B	C	D
S-23	1300-1	579 (600-1)	1300-1½ 579 (600-1½)	1300-1¾ 579 (600-1¾)
CIRCLING	1300-1	579 (600-1)	1300-1½ 579 (600-1½)	1420-2¼ 699 (700-2¼)

HIRL Rwy 14-32 1					
MIRL Rwy 5-23 1					
REIL Rwys 5, 14, and 23 1					
FAF to MAP 6.1 NM					
Knots	60	90	120	150	180
Min:Sec	6:06	4:04	3:03	2:26	2:02

EC-1, 25 FEB 2021 to 25 MAR 2021

EC-1, 25 FEB 2021 to 25 MAR 2021