

APP CRS	Rwy Idg	<b>5395</b>
<b>051°</b>	TDZE	<b>716</b>
	Apt Elev	<b>721</b>

# RNAV (GPS) RWY 5

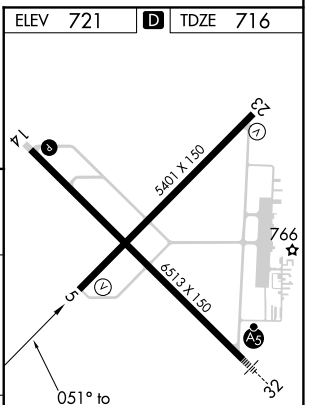
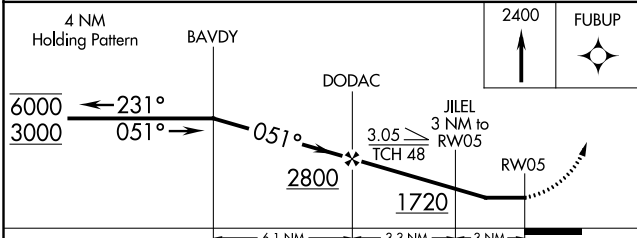
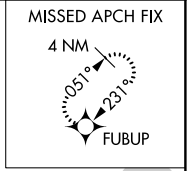
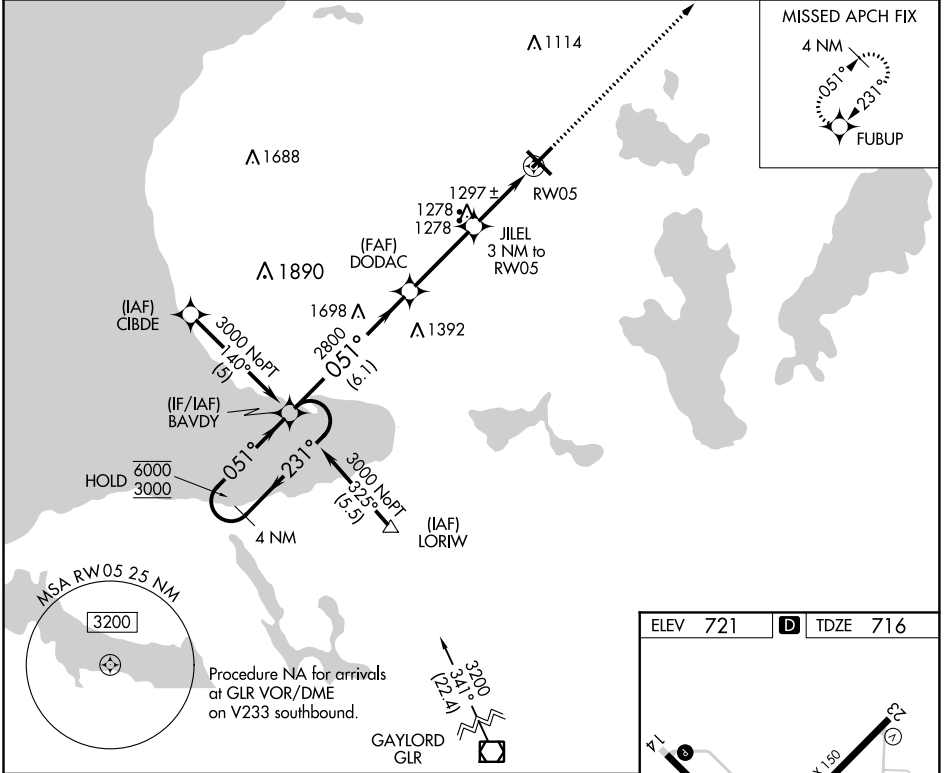
PELLSTON RGNL AIRPORT OF EMMET COUNTY (PLN)

RNP APCH.

**⚠** Straight-in and Circling Rwy 5 NA at night. Rwy 5 helicopter visibility reduction below 1 SM NA. When local altimeter setting not received, use Harbor Springs altimeter setting and increase all MDA 40 feet, increase LNAV Cat A visibility ¼ SM.

**MISSED APPROACH:**  
Climb to 2400 direct FUBUP and hold.

ASOS <b>119.025</b>	MINNEAPOLIS CENTER <b>134.6 354.05</b>	UNICOM <b>123.0 (CTAF) 0</b>
------------------------	---	---------------------------------



CATEGORY	A	B	C	D
LNAV MDA	1560-1 844 (900-1)	1560-1¼ 844 (900-1¼)	1560-2½ 844 (900-2½)	1560-2¾ 844 (900-2¾)
CIRCLING	1560-1¼	839 (900-1¼)	1560-2½ 839 (900-2½)	1560-2¾ 839 (900-2¾)

HIRL Rwy 14-32 0  
MIRL Rwy 5-23 0  
REIL Rws 5, 14, and 23 0

EC-1, 25 FEB 2021 to 25 MAR 2021

EC-1, 25 FEB 2021 to 25 MAR 2021