

WAAS CH 81826 W10B	APP CRS 101°	Rwy Idg TDZE Apt Elev	10502 1203 1203
--	------------------------	-----------------------------	--

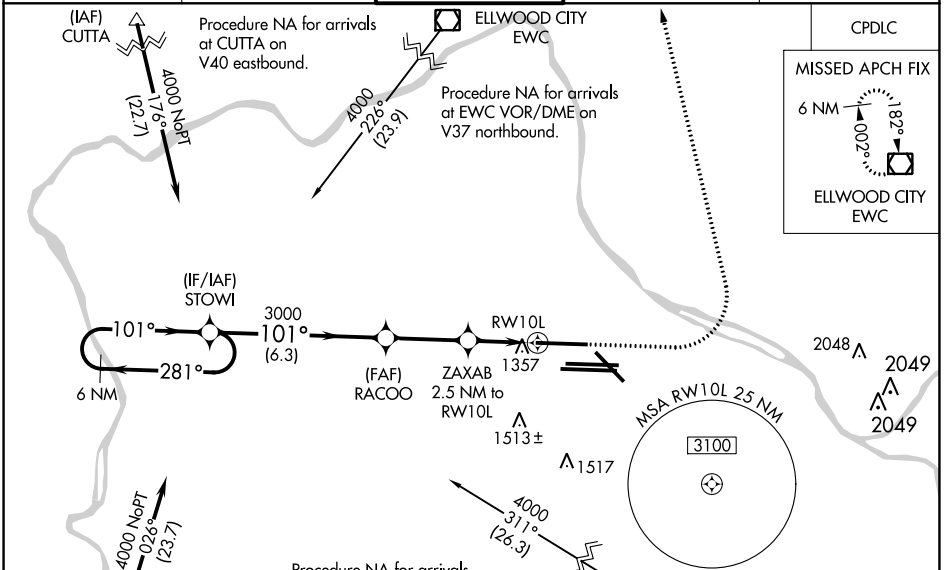
RNAV (GPS) RWY 10L

PITTSBURGH INTL (PIT)

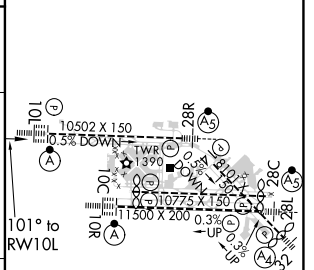
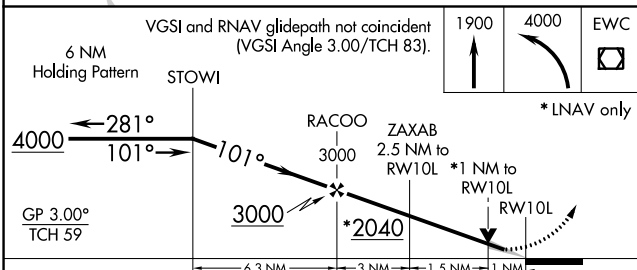
⚠ For uncompensated Baro-VNAV systems, LNAV/VNAV NA below -18°C (0°F) or above 54°C (130°F). Simultaneous approach authorized.
⚠ DME/DME RNP-0.3 NA. For inop ALS, increase LNAV Cats C/D visibility to RVR 6000. LNAV procedure NA during simultaneous operations. Use of FD or AP required during simultaneous operations.

ALSF-2 MISSED APPROACH: Climb to 1900 then climbing left turn to 4000 direct EWC VOR/DME and hold.

D-ATIS ARR 127.25 DEP 135.9	PITTSBURGH APP CON 123.95 360.8	PITTSBURGH TOWER 128.3 291.7	GND CON SOUTH 121.9 348.6 NORTH 127.8 348.6	CLNC DEL 126.75 353.7
---	---	--	---	---------------------------------



ELEV 1203	D TDZE 1203
-----------	--------------------



CATEGORY	A	B	C	D
LPV DA		1403/18	200 (200-½)	
LNAV/VNAV DA		1635/40	432 (500-¾)	
LNAV MDA	1620/24	417 (500-½)	1620/40	417 (500-¾)
C CIRCLING	1700-1	497 (500-1)	1880-2 677 (700-2)	1880-2¼ 677 (700-2¼)

REIL Rwy 10C
HIRL all Rwy
TDZ/CL Rwy 10L, 10R, 28L, 28R,
28C, and 32

NE-4, 25 FEB 2021 to 25 MAR 2021

NE-4, 25 FEB 2021 to 25 MAR 2021