


ILS or LOC RWY 28R

PITTSBURGH INTL (PIT)

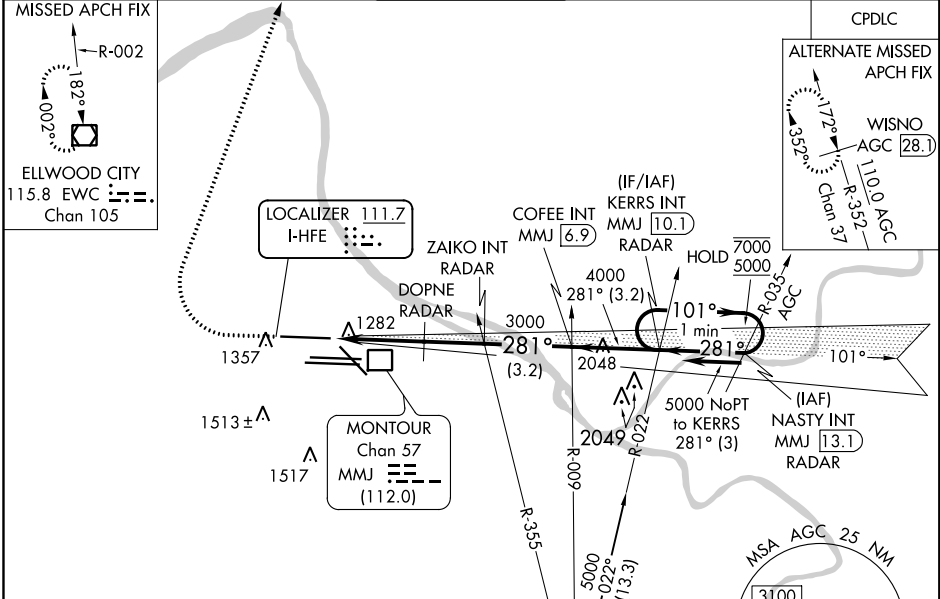
LOC I-HFE 111.7	APP CRS 281°	Rwy ldg 10102 TDZE 1174 Apt Elev 1203
---------------------------	------------------------	--

From NASTY: Radar required for procedure entry.
Radar required for LOC only.

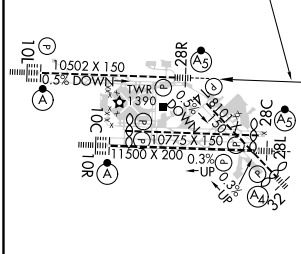
MALSR  MISSED APPROACH: Climb to 1800 then climbing right turn to 5000 direct EWC VOR/DME and hold.

Simultaneous approach authorized. For inop ALS, increase S-ILS 28R Cat E visibility to RVR 4000 and S-LOC 28R Cats C/D/E visibility to RVR 5500. DME from MMJ DME. Simultaneous reception of I-HFE and MMJ DME required.

D-ATIS ARR 127.25 DEP 135.9	PITTSBURGH APP CON 123.95 360.8	PITTSBURGH TOWER 128.3 291.7	GND CON SOUTH 121.9 348.6 NORTH 127.8 348.6	CLNC DEL 126.75 353.7
---	---	--	---	---------------------------------




ELEV 1203	D	TDZE 1174
------------------	----------	------------------



REIL Rwy 10C
HIRL all Rwys
TDZ/CL Rwys 10L, 10R, 28L, 28R,
28C, and 32

FAF to MAP 5.6 NM

Knots	60	90	120	150	180
Min:Sec	5:36	3:44	2:48	2:14	1:52

1800 5000 EWC  VGSI and ILS glidepath not coincident (VGSI Angle 3.00/TCH 71).

*LOC only.

ZAICO INT COFFEE INT
RADAR MMJ 6.9

DOPNE RADAR

3000 3000 4000 7000 5000

281° 281° 101°

GS 3.00° TCH 55

CATEGORY	A	B	C	D	E
S-ILS 28R	1374/18 200 (200-½)				
S-LOC 28R	1540/24	366 (400-½)	1540/35 366 (400-¾)		
C CIRCLING	1700-1	497 (500-1)	1880-2 677 (700-2)	1880-2½ 677 (700-2½)	1880-2½ 677 (700-2½)

NE-4, 25 FEB 2021 to 25 MAR 2021

NE-4, 25 FEB 2021 to 25 MAR 2021