


# RNAV (GPS) RWY 21

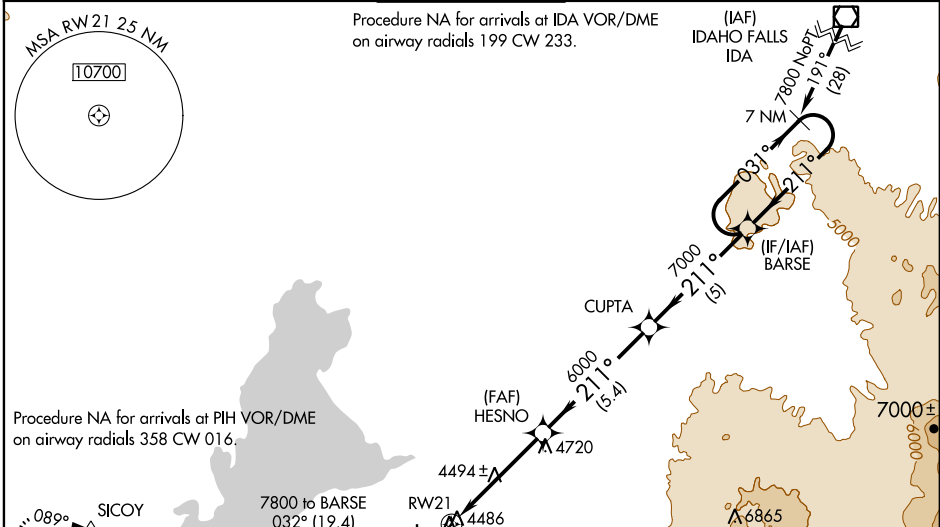
POCATELLO RGNL (PIH)

WAAS CH <b>78212</b> <b>W21A</b>	APP CRS <b>211°</b>	Rwy Idg TDZE <b>4452</b> Apt Elev <b>4452</b>	<b>9059</b>
--	------------------------	---	-------------

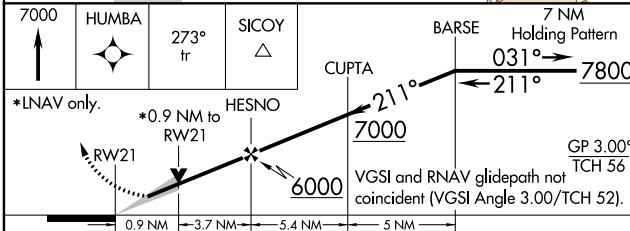
**⚠** Inoperative table does not apply to LNAV Cat D. For inoperative MALSR when using Idaho Falls altimeter setting, increase LPV all Cats visibility to 1 1/4 mile.  
**⚠** For uncompensated Baro-VNAV systems, LNAV/VNAV NA below -23°C (-9°F) or above 39°C (102°F). DME/DME RNP-0.3 NA. When local altimeter setting not received, use Idaho Falls altimeter setting and increase all DA and MDA 140 feet; increase LPV all Cats, LNAV Cat C, and Circling Cat C and D visibility 1/2 mile, increase LNAV/VNAV all Cats visibility 1/2 mile. Baro-VNAV and VDP NA when using Idaho Falls altimeter setting. Circling NA southeast of Rwy 3-21.  
 # RVR 1800 authorized with use of FD or AP or HUD to DA, NA when using Idaho Falls altimeter setting.

**MALSR**  
  
**MISSED APPROACH:** Climb to 7000 direct HUMBA and on 273° track to SICOY and hold.

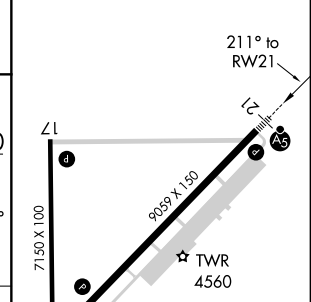
ATIS <b>135.625</b>	SALT LAKE CENTER <b>128.35 239.25</b>	<b>POCATELLO TOWER*</b> <b>119.1 (CTAF) 257.8</b>	GND CON <b>121.9</b>	UNICOM <b>122.95</b>
------------------------	--	--	-------------------------	-------------------------



7000	HUMBA	273° tr	SICOY	BARSE	7 NM Holding Pattern
------	-------	---------	-------	-------	----------------------



ELEV 4452	TDZE 4452
-----------	-----------



CATEGORY	A	B	C	D
LPV DA #		4652/24	200 (200-1/2)	
LNAV/VNAV DA		4797/40	345 (400-3/4)	
LNAV MDA		4780/24	328 (400-1/2)	4780/50 328 (400-1)
CIRCLING	4820-1 368 (400-1)	4920-1 468 (500-1)	4920-1 1/2 468 (500-1 1/2)	5020-2 568 (600-2)

HIRL Rwy 3-21  
 MIRL Rwy 17-35  
 REIL Rwy 3 and 17

NW-1, 25 FEB 2021 to 25 MAR 2021

NW-1, 25 FEB 2021 to 25 MAR 2021