

WAAS CH 60922 W13A	APP CRS 128°	Rwy Idg TDZE Apt Elev	9604 636 661
--	------------------------	-----------------------------	---

RNAV (GPS) RWY 13

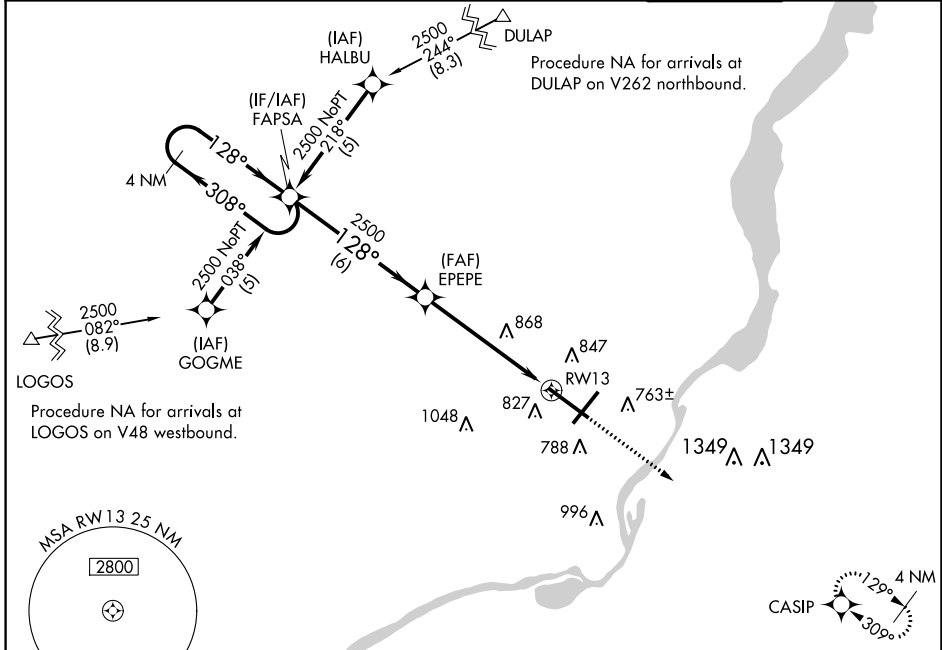
GENERAL DOWNING-PEORIA INTL (PIA)

RNP APCH.

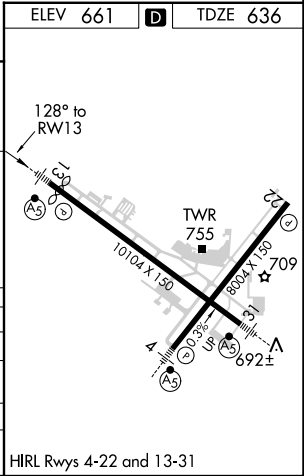
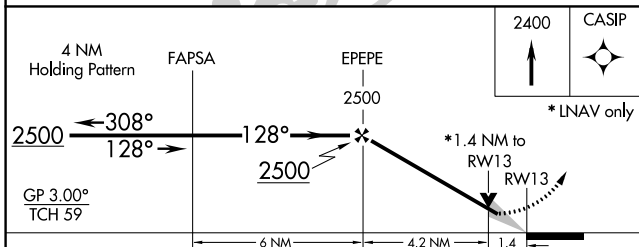
▼ For uncompensated Baro-VNAV systems, LNAV/VNAV NA below -18°C or above 54°C.
 ▲ When local altimeter setting not received, use Logan County altimeter setting and increase all DA 89 feet and all MDA 100 feet, increase LPV DA all Cats visibility to 1½ mile, LNAV/VNAV DA all Cats visibility to 1¾ mile, LNAV MDA Cat C and D visibility to 1¼ mile, and Circling Cat C ¼ mile and Cat D ½ mile. Baro-VNAV and VDP NA when using Logan County altimeter setting. Circling Rwy 13, 31 NA at night.

MALSR MISSED APPROACH: Climb to 2400 direct CASIP and hold.

ATIS 126.1 282.2	PEORIA APP CON (305°-125°) 124.675 317.55(126°-304°)	PEORIA TOWER 124.0 353.85	GND CON 121.85 348.6
----------------------------	---	-------------------------------------	--------------------------------



ELEV 661	D	TDZE 636
----------	----------	----------



CATEGORY	A	B	C	D
LPV DA		1025-¾	389 (400-¾)	
LNAV/VNAV DA		1083-1	447 (500-1)	
LNAV MDA	1120-½	484 (500-½)	1120-1	484 (500-1)
C CIRCLING	1160-1	499 (500-1)	1180-1½ 519 (600-1½)	1400-2¼ 739 (800-2¼)

EC-3, 25 FEB 2021 to 25 MAR 2021

EC-3, 25 FEB 2021 to 25 MAR 2021