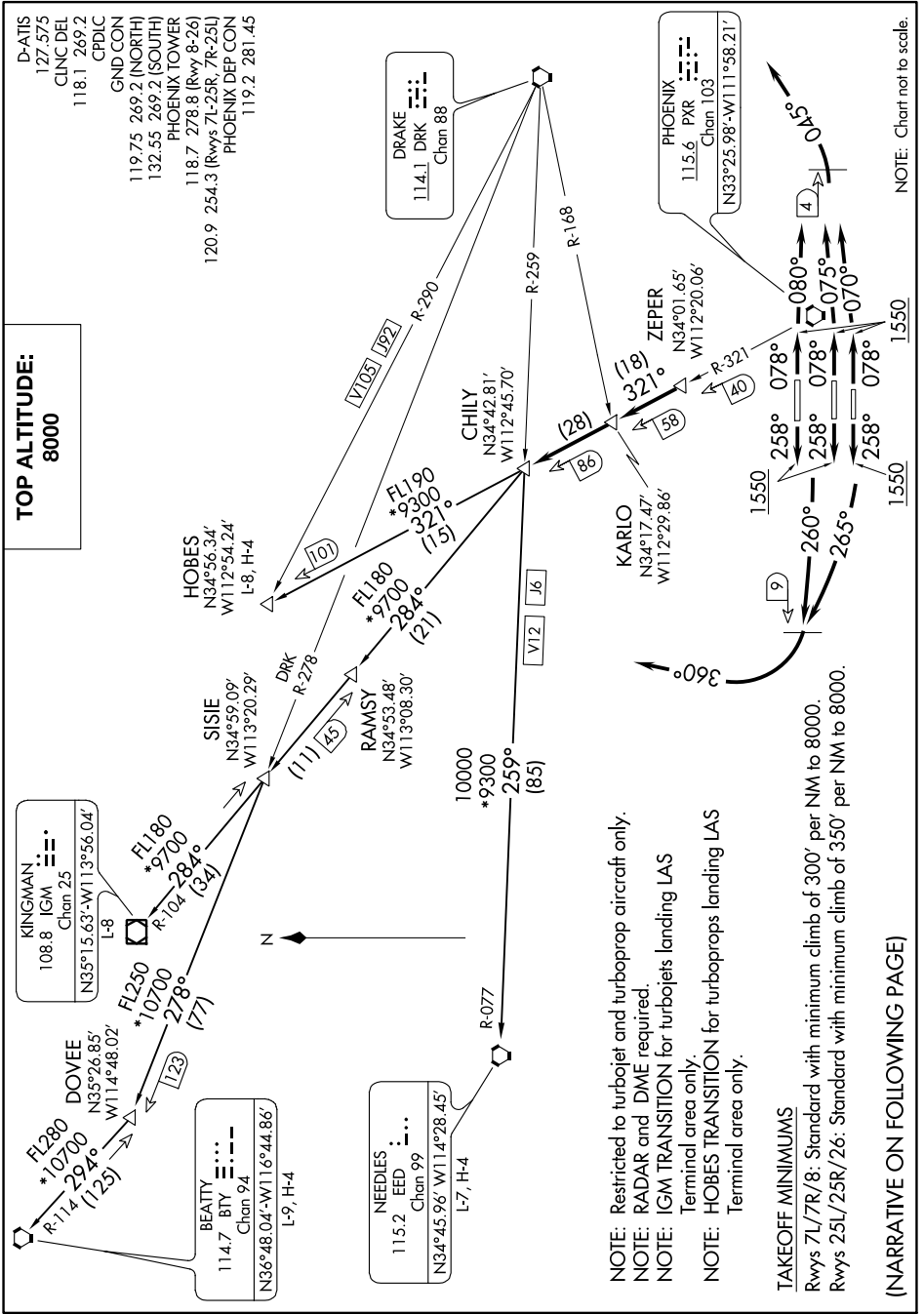


# CHILY FOUR DEPARTURE

AL-322 (FAA)

PHOENIX SKY HARBOR INTL (PHX)  
PHOENIX, ARIZONA

SW-4, 25 FEB 2021 to 25 MAR 2021



# CHILY FOUR DEPARTURE

(CHILY4.CHILY) 25JUN15

PHOENIX, ARIZONA  
PHOENIX SKY HARBOR INTL (PHX)

SW-4, 25 FEB 2021 to 25 MAR 2021

NOTE: Chart not to scale.

- NOTE: Restricted to turbojet and turboprop aircraft only.
- NOTE: RADAR and DME required.
- NOTE: IGM TRANSITION for turbojets landing LAS Terminal area only.
- NOTE: HOBES TRANSITION for turboprops landing LAS Terminal area only.

**TAKEOFF MINIMUMS**  
 Rwy 7L/7R/8: Standard with minimum climb of 300' per NM to 8000.  
 Rwy 25L/25R/26: Standard with minimum climb of 350' per NM to 8000.

(NARRATIVE ON FOLLOWING PAGE)