

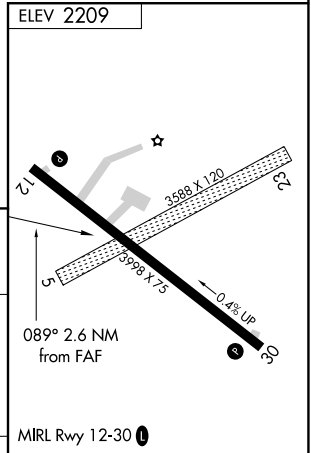
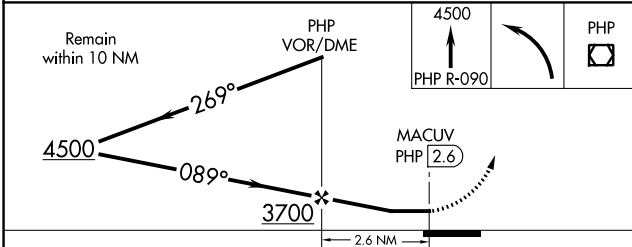
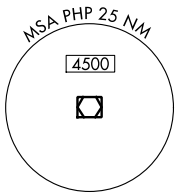
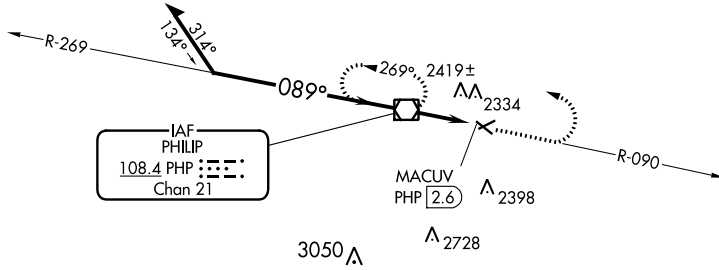
VOR/DME PHP <b>108.4</b> Chan <b>21</b>	APP CRS <b>089°</b>	Rwy Idg TDZE Apt Elev <b>N/A</b> <b>N/A</b> <b>2209</b>
-----------------------------------------------	------------------------	------------------------------------------------------------------------

# VOR-A PHILIP (PHP)

**⚠** Circling to Rwy 12-30 NA at night. When local altimeter setting not received, use Pierre Rgnl altimeter setting and increase all MDA 220 feet, and increase Circling Cat C visibility 3/4 mile.

**⚠** MISSED APPROACH: Climb to 4500 on PHP VOR/DME R-090, then left turn direct PHP VOR/DME and hold.

ASOS <b>118.375</b>	DENVER CENTER <b>127.95 338.2</b>	UNICOM <b>122.8 (CTAF)</b> <b>0</b>
------------------------	--------------------------------------	----------------------------------------



CATEGORY	A	B	C	D	FAF to MAP 2.6 NM					
	2720-1 511 (600-1)	2760-1 551 (600-1)	2840-1 3/4 631 (700-1 3/4)	NA	Knots	60	90	120	150	180
<b>C</b> CIRCLING					Min:Sec	2:36	1:44	1:18	1:02	0:52

NC-1, 25 FEB 2021 to 25 MAR 2021

NC-1, 25 FEB 2021 to 25 MAR 2021