

VOR/DME JBR 108.6 Chan 23	APP CRS 019°	Rwy Idg TDZE Apt Elev	4011 290 290
---	------------------------	-----------------------------	---

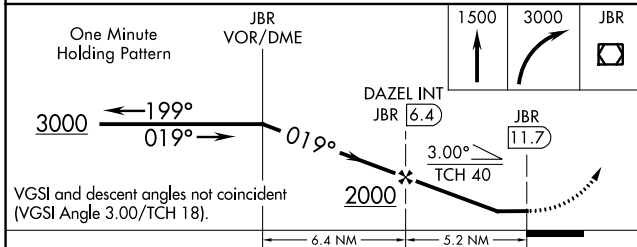
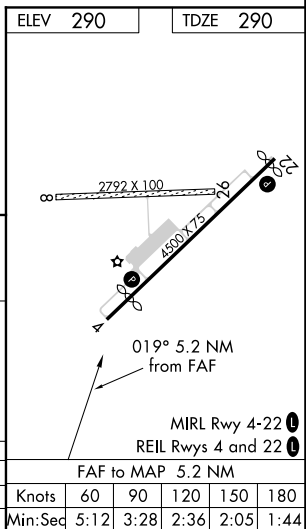
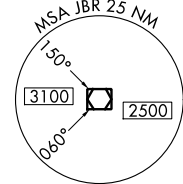
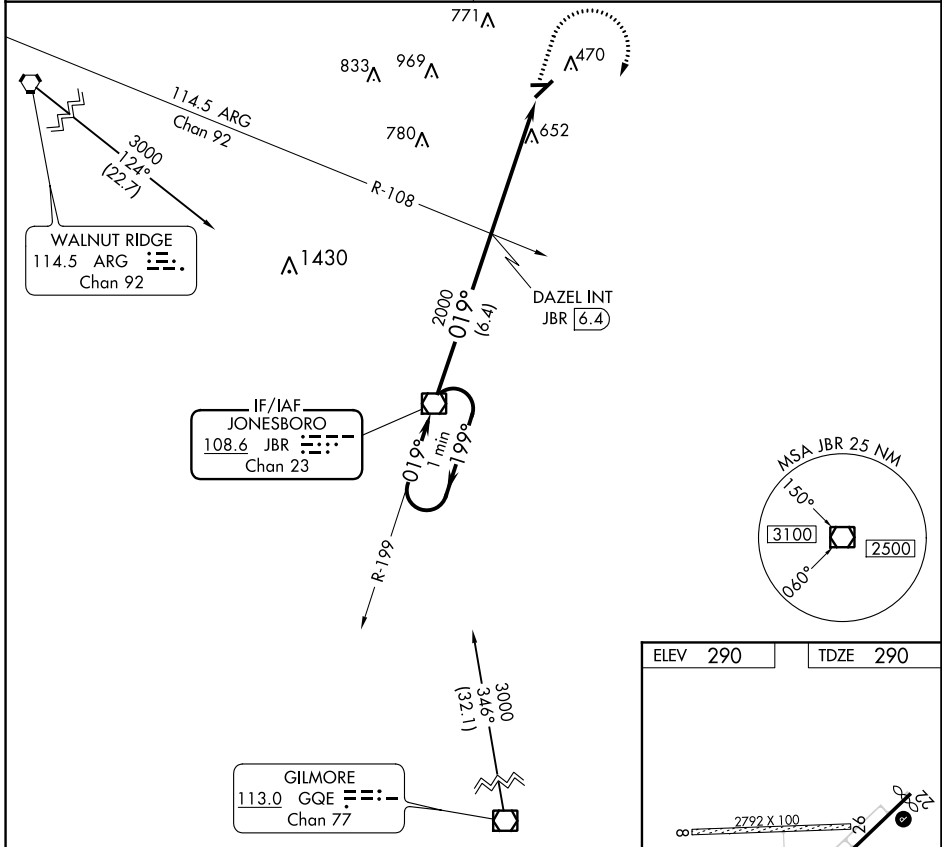
VOR RWY 4

KIRK FIELD (PGR)

NA Helicopter visibility reduction below 1 SM NA. Procedure NA at night. Use Jonesboro altimeter setting; when not received, use Walnut Ridge altimeter setting and increase all MDA 20 feet.

MISSED APPROACH: Climb to 1500 then climbing right turn to 3000 direct JBR VOR/DME and hold.

MEMPHIS CENTER 120.075 289.4	UNICOM 122.8 (CTAF)
--	-------------------------------



CATEGORY	A	B	C	D
S-4	980-1	690 (700-1)		NA
CIRCLING	980-1	690 (700-1)		NA

SC-1, 25 FEB 2021 to 25 MAR 2021

SC-1, 25 FEB 2021 to 25 MAR 2021