

WAAS CH 50133 W11A	APP CRS 105°	Rwy Idg 3302 TDZE 1183 Apt Elev 1183
--	------------------------	---

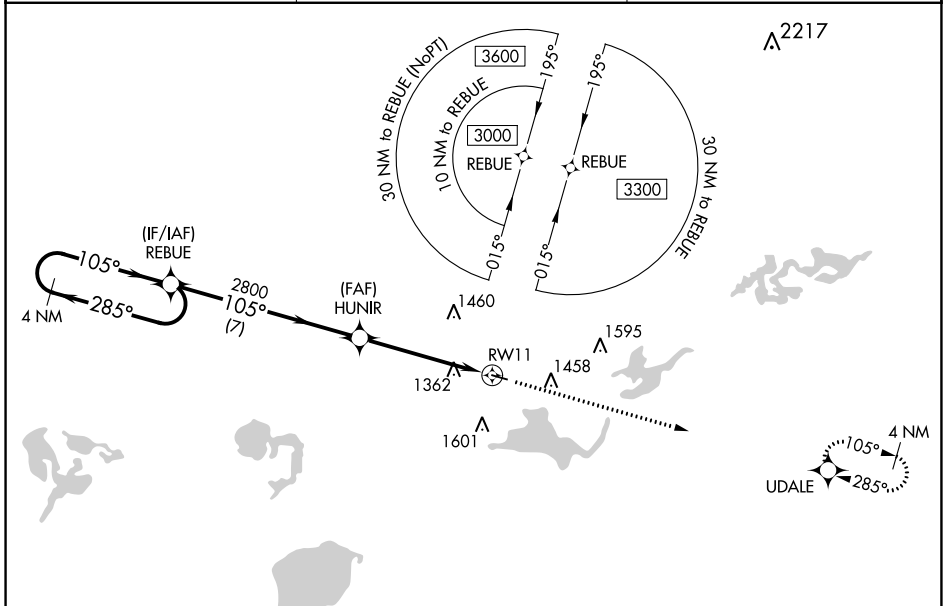
RNAV (GPS) RWY 11

PAYNESVILLE MUNI (PEX)

⚠ Baro-VNAV and VDP NA when using Litchfield altimeter setting. For uncompensated Baro-VNAV systems, LNAV/VNAV NA below -17°C (2°F) or above 54°C (130°F). DME/DME RNP-0.3 NA. When local altimeter setting not received, use Litchfield altimeter setting and increase all DA 51 feet and all MDA 60 feet; increase LPV and LNAV/VNAV all Cats visibility 1/8 mile and LNAV Cat C and Circling Cat C visibility 1/4 mile.

⚠ MISSED APPROACH: Climb to 3000 direct UDALÉ and hold.

AWOS-3PT 120,35	MINNEAPOLIS CENTER 125.5 323.1	CTAF 122.9 0
---------------------------	--	------------------------



ELEV 1183		TDZE 1183	
4 NM Holding Pattern		3000 UDALÉ	
GP 3.00° TCH 42		*1.4 NM to RWY 11 *LNAV only.	
7 NM		3.5 NM	
CATEGORY	A	B	C
LPV DA	1383-1 200 (200-1)		NA
LNAV/VNAV DA	1653-1 1/8 470 (500-1 1/8)		NA
LNAV MDA	1680-1	497 (500-1)	1680-1 1/8 497 (500-1 1/8)
CIRCLING	1680-1 497 (500-1)	1700-1 517 (600-1)	1780-1 1/2 597 (600-1 1/2)

NC-1, 25 FEB 2021 to 25 MAR 2021

NC-1, 25 FEB 2021 to 25 MAR 2021