

APP CRS <b>189°</b>	Rwy ldg <b>5499</b> TDZE <b>968</b> Apt Elev <b>990</b>
------------------------	---

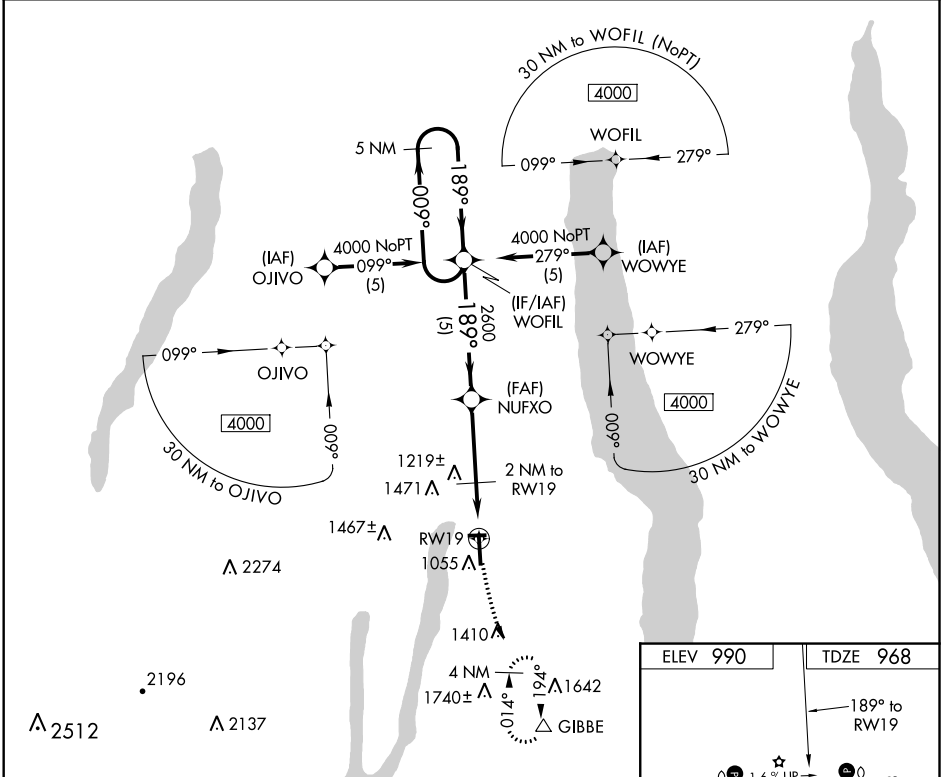
# RNAV (GPS) RWY 19

PENN YAN (P.E.O)

**⚠** DME/DME RNP-0.3 NA. When local altimeter setting not received, use Elmira altimeter setting and increase all MDA 80 feet.  
**⚠** Increase S-19 Cats C/D, and Circling Cats C/D visibility ¼ mile.

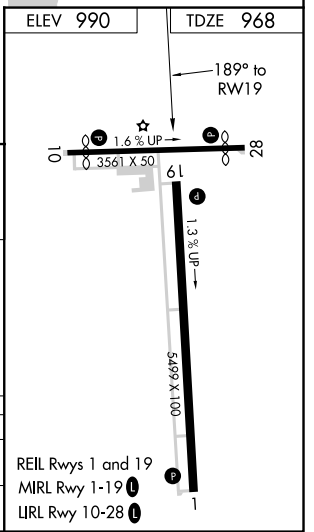
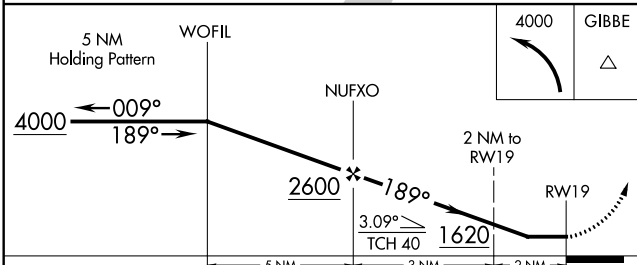
MISSED APPROACH: Climbing left turn to 4000 direct GIBBE and hold, continue climb-in-hold to 4000.

ASOS <b>121.175</b>	ELMIRA APP CON* <b>124.3 257.8</b>	UNICOM <b>123.0 (CTAF) 0</b>
------------------------	---------------------------------------	---------------------------------



NE-2, 25 FEB 2021 to 25 MAR 2021

NE-2, 25 FEB 2021 to 25 MAR 2021



CATEGORY	A	B	C	D
LNVA MDA	1400-1	432 (500-1)	1400-1 ¼ 432 (500-1 ¼)	1400-1 ½ 432 (500-1 ½)
CIRCLING	1480-1 490 (500-1)	1600-1 610 (700-1)	1680-2 690 (700-2)	1780-2 ½ 790 (800-2 ½)

REIL Rwy 1 and 19  
MIRL Rwy 1-19  
LRL Rwy 10-28