

HI-ILS or LOC/DME RWY 10R

LOC/DME I-PDX 110.5 Chan 42	APCH CRS 103°	Rwy Ildg 11,000 THRE 23 Arprt Elev 31
--	-------------------------	--

JAL-330 [USAF]

PORTLAND INTL (KPDX)

▼ * When ALS inop, increase RVR to 40 and vis to ¾ mile.
** When ALS inop, increase CAT CDE RVR to 60 and vis to 1½ miles.

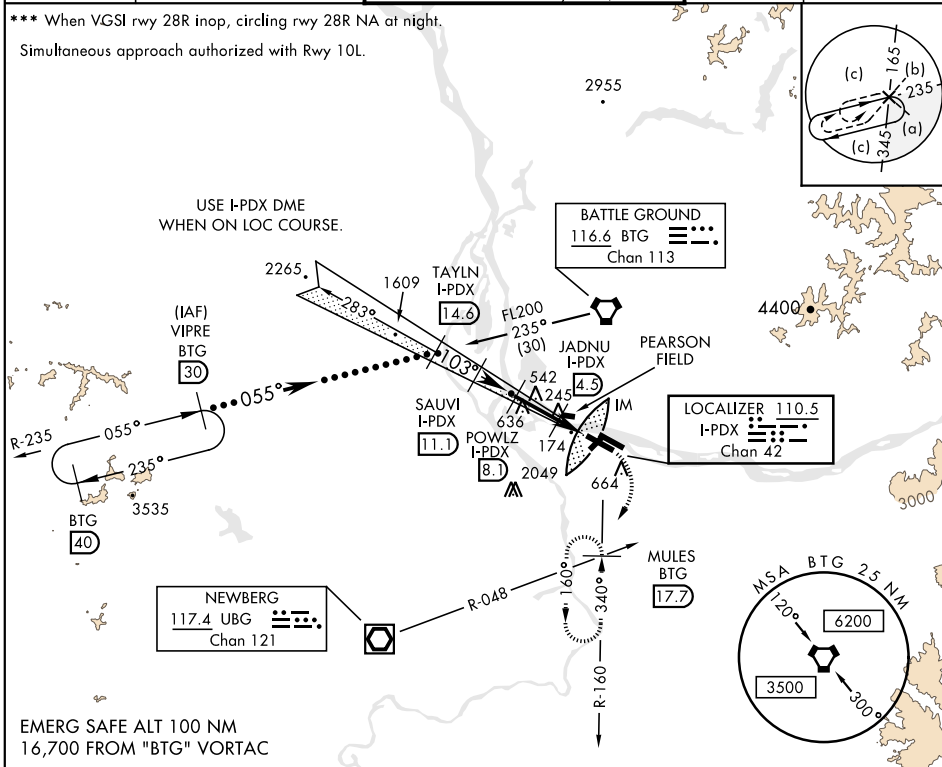


MISSED APPROACH: Climb to 1100 then climbing right turn to 5000 on BTG VORTAC R-160 to MULES/BTG 17.7 DME and hold, continue climb-in-hold to 5000.

ATIS 128.35 269.9	PORTLAND APP CON 118.1 284.6 (100°-279°) 124.35 299.2 (280°-099°)	PORTLAND TOWER 118.7 257.8 Rwy 10L-28R 123.775 251.125 Rwy 3-21, 10R-28L	GND CON 121.9 348.6	CLNC DEL 120.125 318.1
-----------------------------	---	--	-------------------------------	----------------------------------

*** When VGSI rwy 28R inop, circling rwy 28R NA at night.

Simultaneous approach authorized with Rwy 10L.



NW-1, 25 FEB 2021 to 25 MAR 2021

NW-1, 25 FEB 2021 to 25 MAR 2021

EMERG SAFE ALT 100 NM
16,700 FROM "BTG" VORTAC

VIPRE BTG 30	TAYLN I-PDX 14.6	SAUVI I-PDX 11.1	POWLZ I-PDX 8.1	JADNU I-PDX 4.5	I-PDX 2	MULES BTG 17.7	ELEV 31	THRE 23
<p>FL200 055°</p> <p>3800 103°</p> <p>2900 2000</p> <p>860+</p> <p>3.6 NM 2.4 NM .1</p>						<p>1100</p> <p>5000</p> <p>BTG R-160</p> <p>103° 6.0 NM from FAF</p> <p>424 ±</p>		
<p>VGSI and ILS glidepath not coincident.</p> <p>† LOC ONLY</p> <p>GS 3.00° TCH 53</p>								
CATEGORY	C		D		E			
S-ILS 10R*	223/18		200	(200-¾)				
S-LOC/DME 10R**	440/40		417 (500-¾)					
CIRCLING***	760-2		980-3		1140-3			
	729 (800-2)		949 (1000-3)		1109 (1200-3)			

HI-ILS or LOC/DME RWY 10R