

WAAS CH <b>78412</b> <b>W26A</b>	APP CRS <b>254°</b>	Rwy Idg TDZE <b>1487</b> Apt Elev <b>1497</b>	<b>6301</b>
--	------------------------	---	-------------

# RNAV (GPS) RWY 26

EASTERN OREGON RGNL AT PENDLETON (PDT)

RNP APCH.

**⚠** Circling Rwy 11 NA at night. For uncompensated Baro-VNAV systems, LNAV/VNAV NA below -17°C or above 54°C. For inop ALS, increase LNAV/VNAV all Cats visibility to RVR 4500.  
**⚠** -22°C  
 #RVR 1800 authorized with the use of FD or AP or HUD to DA.

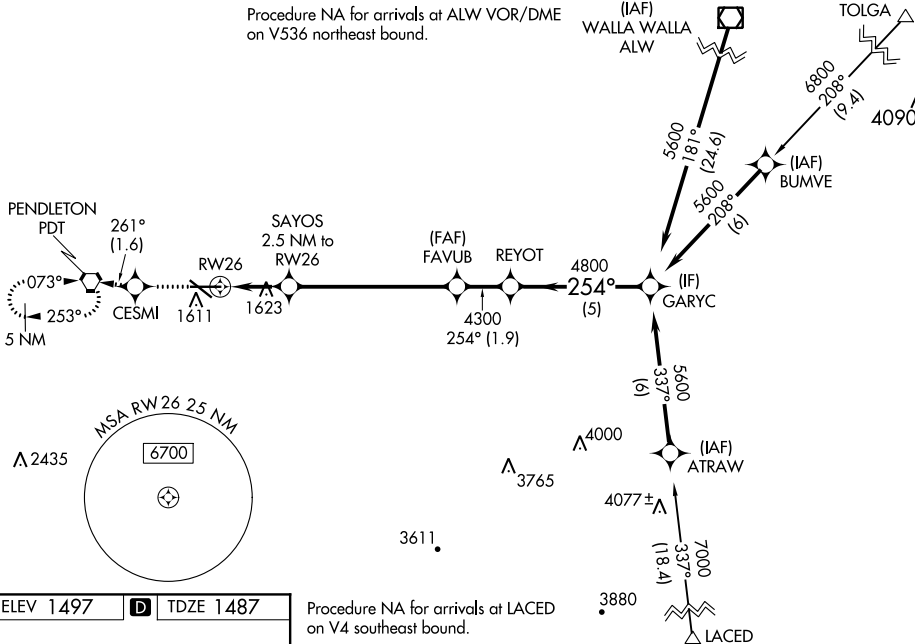
MALSR



**MISSED APPROACH:** Climb to 4300 direct CESMI and on track 261° to PDT VORTAC and hold, continue climb-in-hold to 4300.

ASOS <b>118.325</b>	CHINOOK APP CON * <b>133.15 379.15</b>	PENDLETON TOWER * <b>119.7 (CTAF) 257.8</b>	GND CON <b>121.9 257.8</b>	UNICOM <b>122.95</b>
------------------------	---	--	-------------------------------	-------------------------

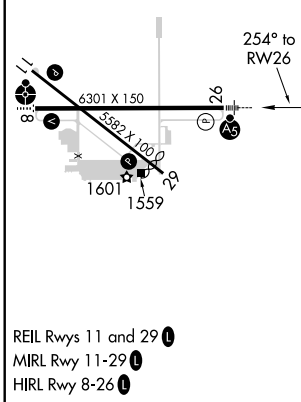
Procedure NA for arrivals at ALW VOR/DME on V536 northeast bound.



ELEV <b>1497</b>	<b>D</b>	TDZE <b>1487</b>
------------------	----------	------------------

Procedure NA for arrivals at LACED on V4 southeast bound.

4300	CESMI	tr 261°	PDT	VGSI and RNAV glidepath not coincident (VGSI Angle 3.00/TCH 48).			
*LNAV only				SAYOS 2.5 NM to RW26	FAVUB 4300	REYOT 4800	GARYC 5600
*1.1 NM to RW26				2320*	4300	254°	GP 3.00° TCH 55
1.1 NM				1.4 NM	6 NM	1.9 NM	5 NM
CATEGORY	A	B	C	D			
LPV DA#	1687/24			200 (200-½)			
LNAV/VNAV DA	1800/24			313 (400-½)			
LNAV MDA	1880/24	393 (400-½)	1880/40	393 (400-¾)			
<b>C</b> CIRCLING	1920-1 423 (500-1)	1960-1 463 (500-1)	1980-1½ 483 (500-1½)	2200-2¼ 703 (800-2¼)			



PENDLETON, OREGON  
 Orig-F 31DEC20

45°42'N-118°51'W

EASTERN OREGON RGNL AT PENDLETON (PDT)  
**RNAV (GPS) RWY 26**

NW-1, 25 FEB 2021 to 25 MAR 2021

NW-1, 25 FEB 2021 to 25 MAR 2021