

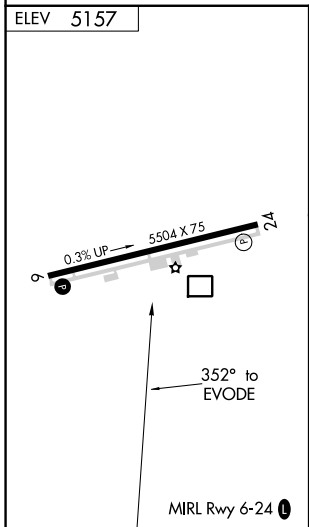
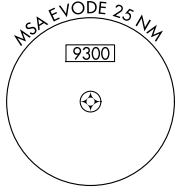
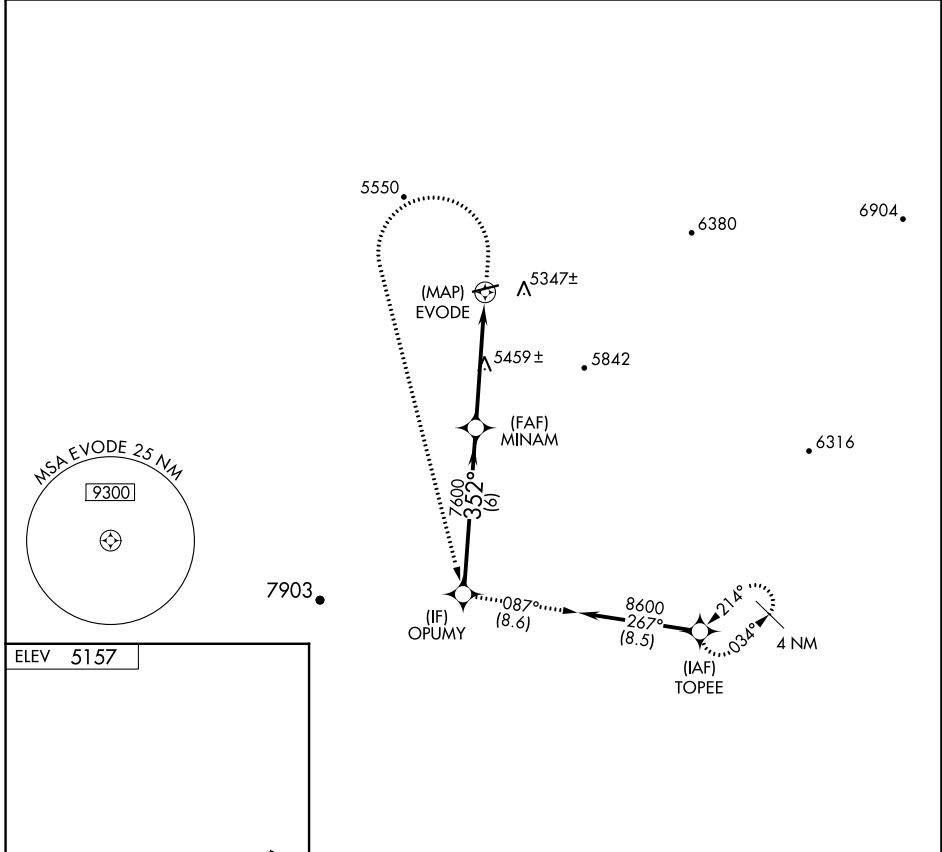
RNAV (GPS)-A

PAYSON (P.AN)

APP CRS 352°	Rwy Idg TDZE Apt Elev	N/A N/A 5157
------------------------	-----------------------------	---

NA GPS or RNP-0.3 required. DME/DME RNP-0.3 NA. MISSED APPROACH: Climb to 6700 then climbing left turn to 9000 direct OPUMY WP and via 087° track to TOPEE WP and hold.

AWOS-3PT 119.325	ALBUQUERQUE CENTER 127.675 306.2	UNICOM 122.8 (CTAF)
----------------------------	--	-------------------------------



	OPUMY	6700	9000	OPUMY	tr 087°	TOPEE
	8600	MINAM	EVODE			
Procedure Turn	NA					
	6 NM		4.9 NM			
CATEGORY	A	B	C	D		
CIRCLING	5720-1	563 (600-1)	5760-1¾ 603 (700-1¾)	5760-2 603 (700-2)		