

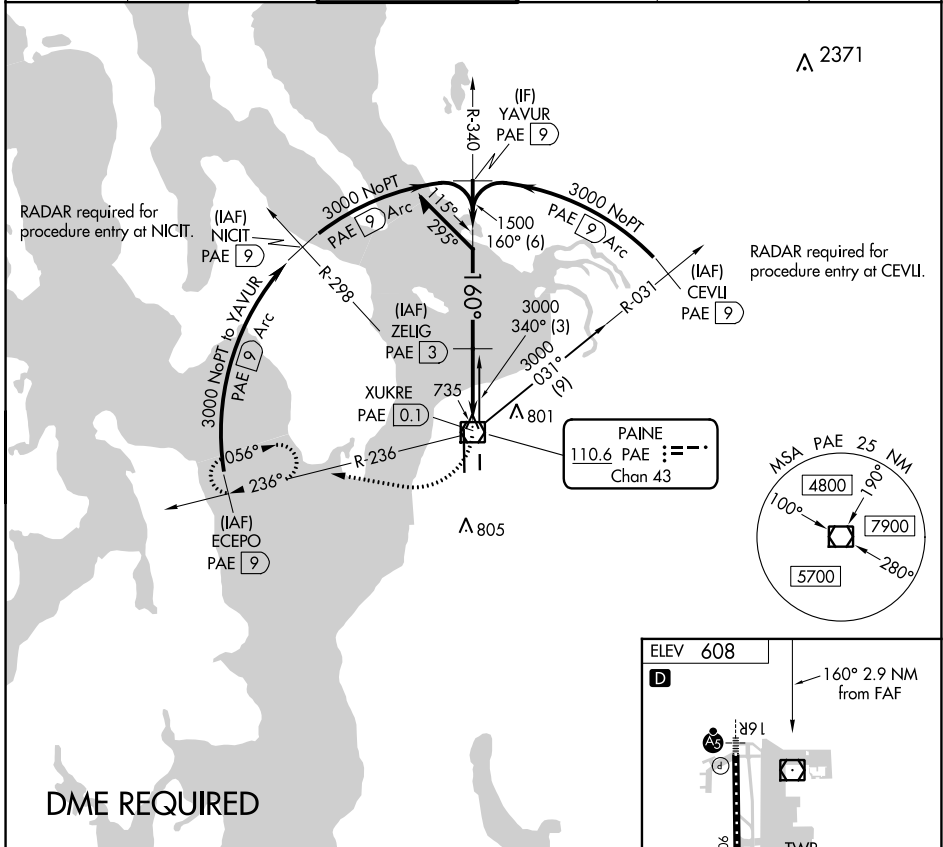
VOR/DME PAE <b>110.6</b> Chan <b>43</b>	APP CRS <b>160°</b>	Rwy Idg TDZE Apt Elev <b>N/A</b> <b>N/A</b> <b>608</b>
---	------------------------	---

**VOR-A**

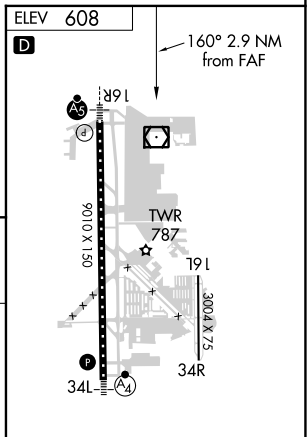
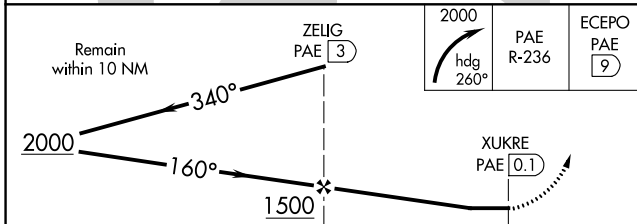
SNOHOMISH COUNTY (PAINE FIELD) (P.A.E)

<p>◣ Circling Rwy 34R NA at night. DME required.</p>		<p>MISSED APPROACH: Climbing right turn to 2000 on heading 260° and PAE VOR/DME R-236 to ECEPO/PAE 9 DME and hold.</p>			
--	--	--	--	--	--

ATIS <b>128.65</b>	SEATTLE APP CON <b>128.5 306.9</b>	PAINE TOWER ★ <b>132.95</b> (CTAF) <b>0 256.7</b>	GND CON <b>121.8 339.8</b>	CLNC DEL <b>127.175</b>	UNICOM <b>122.95</b>
-----------------------	---------------------------------------	--	-------------------------------	----------------------------	-------------------------



**DME REQUIRED**



CATEGORY	A	B	C	D
◣ CIRCLING	1100-1	492 (500-1)	1120-1½ 512 (600-1½)	1160-2 552 (600-2)

TDZ/CL Rwy 16R  
HIRL Rwy 16R-34L **0**  
REIL Rws 16L and 34R **3149**  
MIRL Rws 11-29 and 16L-34R

**VOR-A**

NW-1, 25 FEB 2021 to 25 MAR 2021

NW-1, 25 FEB 2021 to 25 MAR 2021