

WAAS CH <b>99722</b> <b>W31A</b>	APP CRS <b>312°</b>	Rwy Idg <b>5002</b> TDZE <b>943</b> Apt Elev <b>962</b>
--	------------------------	---

# RNAV (GPS) RWY 31

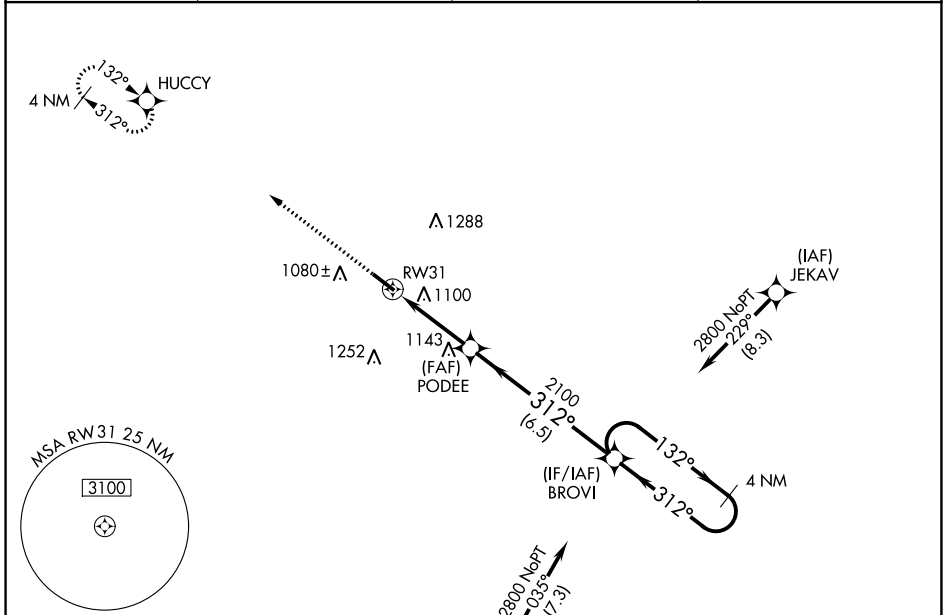
LIVINGSTON COUNTY SPENCER J HARDY (OZW)

RNP APCH.

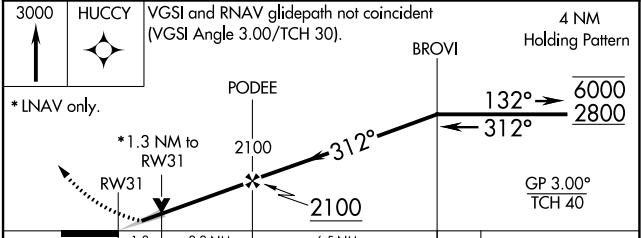
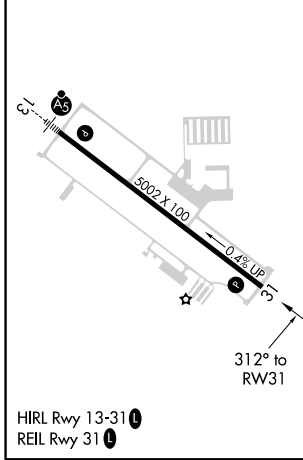
▼ For uncompensated Baro-VNAV systems, LNAV/VNAV NA below -16°C or above 54°C.

MISSED APPROACH:  
Climb to 3000 direct  
HUCCY and hold.

AWOS-3 <b>118.875</b>	DETROIT APP CON <b>132.35 284.0</b>	CLNC DEL <b>121.725 (GCO)</b>	UNICOM <b>123.0 (CTAF) 0</b>
--------------------------	--	----------------------------------	---------------------------------



ELEV 962	TDZE 943
----------	----------



CATEGORY	A	B	C	D
LPV DA	1143-3/4 200 (200-3/4)			
LNAV/VNAV DA	1410-1 1/2 467 (500-1 1/2)			
LNAV MDA	1400-1	457 (500-1)	1400-1 3/8	457 (500-1 3/8)
CIRCLING	1400-1 438 (500-1)	1420-1 458 (500-1)	1420-1 1/2 458 (500-1 1/2)	1520-2 558 (600-2)

EC-1, 25 FEB 2021 to 25 MAR 2021

EC-1, 25 FEB 2021 to 25 MAR 2021