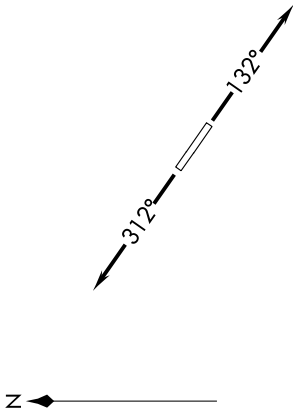


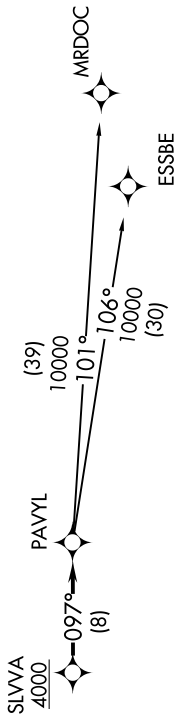
EC-1, 25 FEB 2021 to 25 MAR 2021

**TOP ALTITUDE:
ASSIGNED BY ATC**



AWOS-3
118.875
CUNC DEL
121.725
CTAF
123.0
DETROIT DEP CON
132.35 284.0

NOTE: RNAV 1.
NOTE: RADAR required.
NOTE: DME/DME/IRU or GPS required.
NOTE: Turbojet departures at/above 10000, maintain 280K until advised by ATC.



TAKEOFF MINIMUMS:
Standard.

NOTE: Chart not to scale.

DEPARTURE ROUTE DESCRIPTION

TAKEOFF RUNWAY 13: Climb on heading 132° or as assigned for RADAR vectors to cross SLVVA at or above 4000, thence....
TAKEOFF RUNWAY 31: Climb on heading 312° or as assigned for RADAR vectors to cross SLVVA at or above 4000, thence....

....on track 097° to PAVYL, then on (transition). Maintain ATC assigned altitude, expect filed altitude 10 minutes after departure.

ESSBE TRANSITION (PAVYL2.ESSBE):
MRDOC TRANSITION (PAVYL2.MRDOC):

EC-1, 25 FEB 2021 to 25 MAR 2021