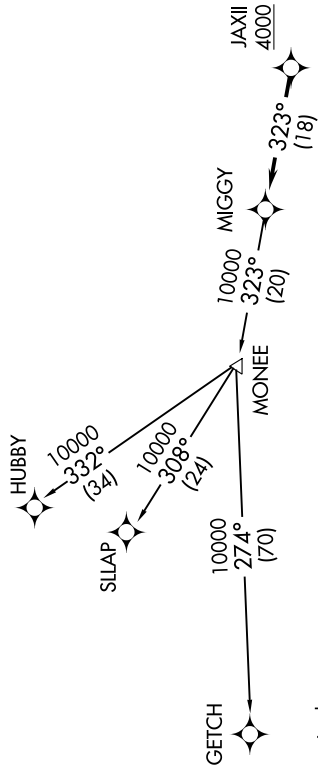


EC-1, 25 FEB 2021 to 25 MAR 2021

**TOP ALTITUDE:
ASSIGNED BY ATC**

AWOS-3
118.875
CINC DEL
121.725
CTAF
123.0
DETROIT DEP CON
132.35 284.0



- NOTE: RNAV 1.
- NOTE: RADAR required.
- NOTE: DME/DME/IRU or GPS required.
- NOTE: Turbojet departures at/above 10000, maintain 280K until advised by ATC.
- NOTE: GETCH TRANSITION: For use by KMKE area arrivals only, or as assigned by ATC.

DEPARTURE ROUTE DESCRIPTION

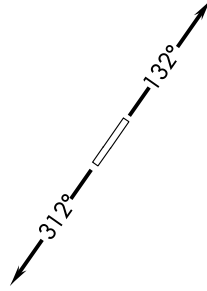
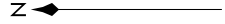
TAKEOFF RUNWAY 13: Climb on heading 132° or as assigned for RADAR vectors to cross JAXII at or above 4000, thence....

TAKEOFF RUNWAY 31: Climb on heading 312° or as assigned for RADAR vectors to cross JAXII at or above 4000, thence....

....on track 323° to MIGGY, then on (transition). Maintain ATC assigned altitude, expect filed altitude 10 minutes after departure.

- GETCH TRANSITION (MIGGY2.GETCH):
- HUBBY TRANSITION (MIGGY2.HUBBY):
- SILAP TRANSITION (MIGGY2.SILAP):

TAKEOFF MINIMUMS:
Standard.



NOTE: Chart not to scale.

EC-1, 25 FEB 2021 to 25 MAR 2021