

WAAS CH 82627 W12A	APP CRS 122°	Rwy Idg 5500 TDZE 1127 Apt Elev 1145
--	------------------------	---

RNAV (GPS) RWY 12

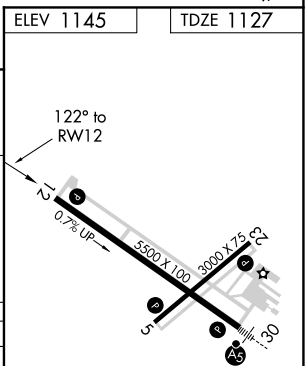
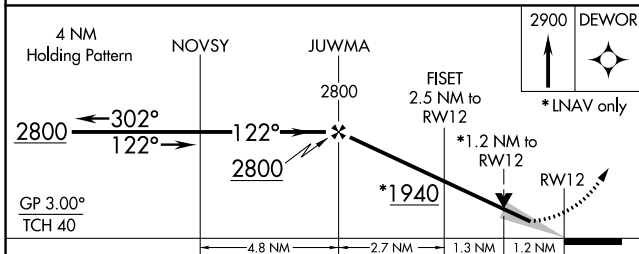
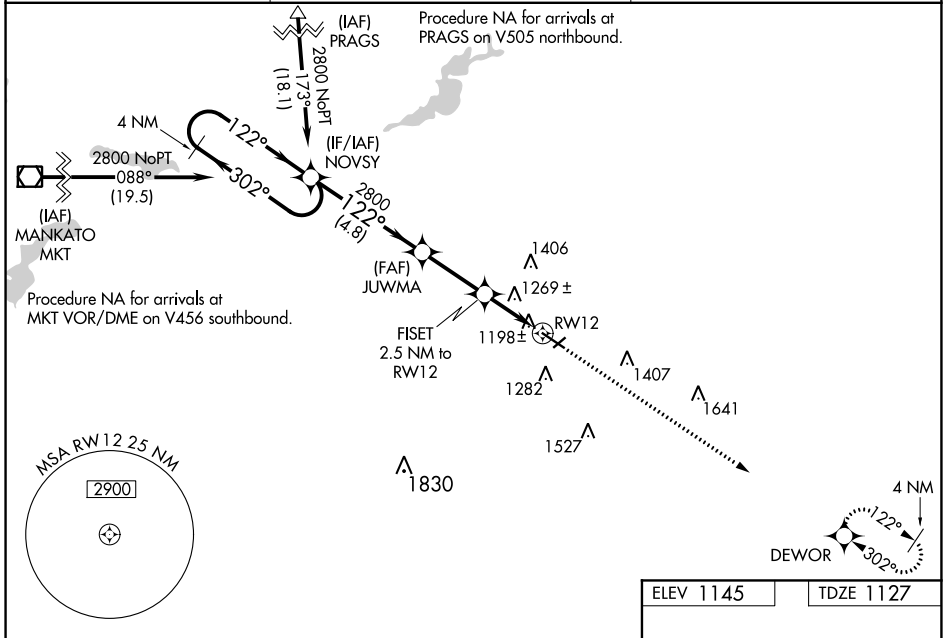
OWATONNA DEGNER RGNL (OWA)

RNP APCH.

Baro-VNAV NA when using Faribault altimeter setting. For uncompensated Baro-VNAV systems, LNAV/VNAV NA below -17°C (2°F) or above 36°C (96°F). VDP NA with Faribault altimeter setting. When local altimeter setting not received, use Faribault altimeter setting and increase all DA 41 feet and all MDA 60 feet. Increase LPV all Cats visibility to 1¼ SM. Increase LNAV/VNAV all Cats visibility to 1 SM and LNAV Cat C/D visibility to 1¾ SM. Increase Circling Cat C visibility to 1¼ SM and Cat D visibility to 2½ SM.

MISSED APPROACH: Climb to 2900 direct DEWOR and hold.

AWOS-3 128.325	ROCHESTER APP CON * 119.8 251.125	UNICOM 122.7 (CTAF)
--------------------------	---	-------------------------------



CATEGORY	A	B	C	D
LPV DA		1441-1	314 (300-1)	
LNAV/VNAV DA		1400-7/8	273 (300-7/8)	
LNAV MDA	1520-1	393 (400-1)	1520-1 1/8	393 (400-1 1/8)
CIRCLING	1640-1 495 (500-1)	1700-1 555 (600-1)	1720-1 1/2 575 (600-1 1/2)	1880-2 1/4 735 (800-2 1/4)

MIRL Rwy 5-23

REIL Rws 5, 12, and 23

HIRL Rwy 12-30

NC-1, 25 FEB 2021 to 25 MAR 2021

NC-1, 25 FEB 2021 to 25 MAR 2021