

WAAS CH 93611 W31A	APP CRS 312°	Rwy Idg TDZE 5885 841 Apt Elev 845
--	------------------------	--

RNAV (GPS) RWY 31

OTTUMWA RGNL (OTM)

⚠ For uncompensated Baro-VNAV systems, procedure NA below -16°C (4°F) or above 54°C (130°F). DME/DME RNP-0.3 NA. Baro-VNAV and VDP NA when using Fairfield altimeter setting. When local altimeter setting not received, use Fairfield altimeter setting and increase all DA 56 feet and all MDA 60 feet. Increase LNAV/VNAV all Cats and LNAV Cat C ¼ mile. For inoperative MALSR when using Fairfield altimeter setting, increase LPV all Cats visibility to 1 mile.

MALSR

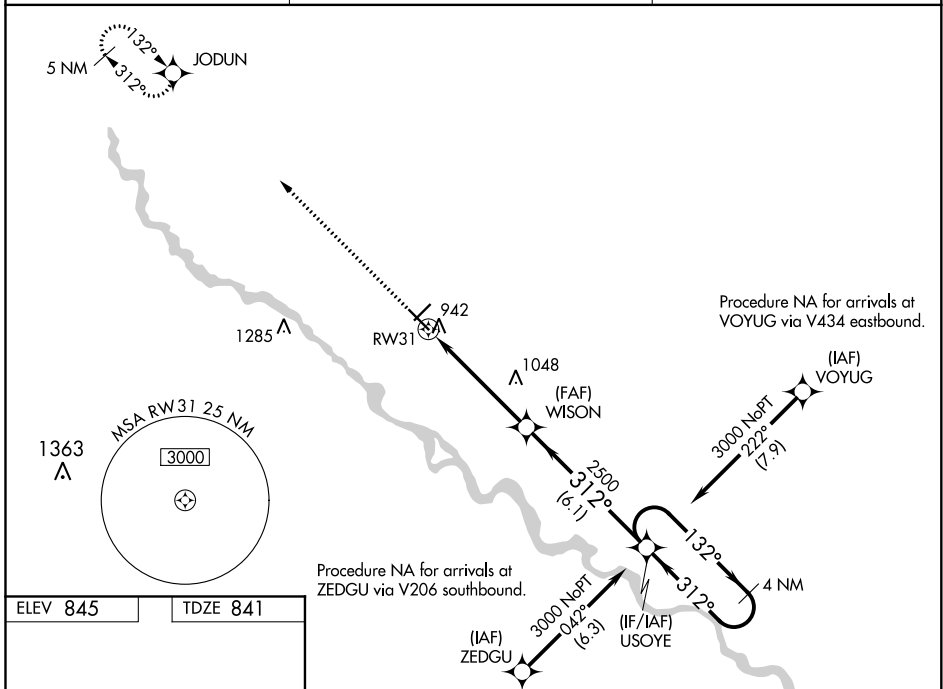


MISSED APPROACH:
Climb to 2800 direct
JODUN and hold.

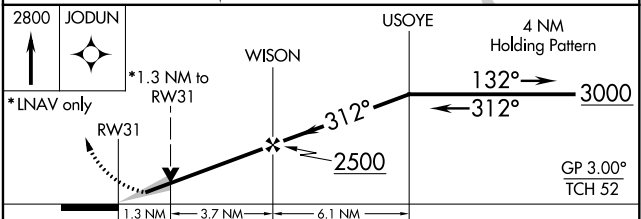
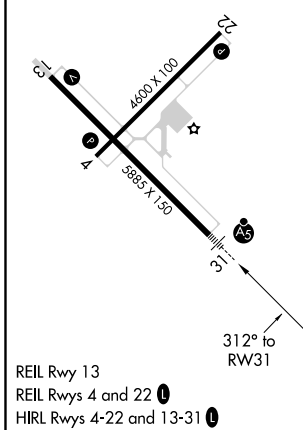
ASOS
124.175

CHICAGO CENTER
118.15 335.575

UNICOM
123.0 (CTAF) ①



ELEV 845	TDZE 841
----------	----------



CATEGORY	A	B	C	D
LPV DA	1091-½ 250 (300-½)			NA
LNAV/VNAV DA	1192-¾ 351 (400-¾)			NA
LNAV MDA	1300-½	459 (500-½)	1300-¾ 459 (500-¾)	NA
CIRCLING	1300-1	455 (500-1)	1300-1½ 455 (500-1½)	NA

NC-3, 25 FEB 2021 to 25 MAR 2021

NC-3, 25 FEB 2021 to 25 MAR 2021