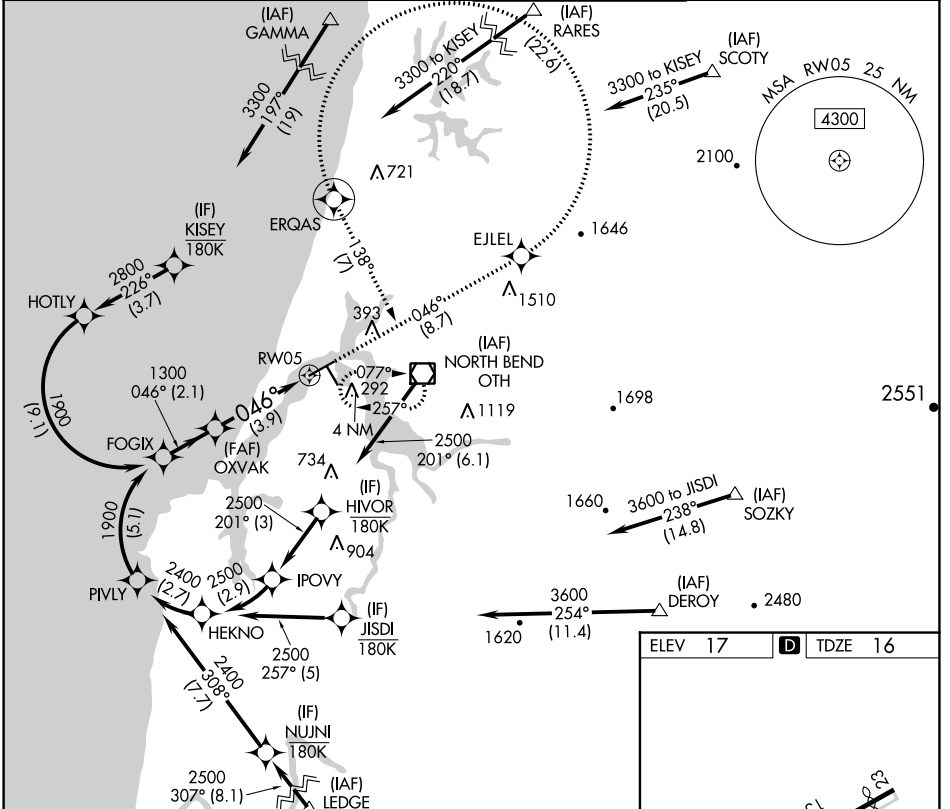


APP CRS	Rwy Idg	<b>5320</b>
<b>046°</b>	TDZE	<b>16</b>
	Apt Elev	<b>17</b>

# RNAV (RNP) Z RWY 5

SOUTHWEST OREGON RGNL (OTH)

RNP AR APCH. RF required. For inop ALS, increase *RNP 0.11 all Cats visibility to 1 SM, #RNP 0.30 all Cats visibility to 1 1/8 SM, and RNP 0.30 all Cats visibility to 1 1/8 SM. For uncompensated baro-VNAV systems, procedure NA below -2°C or above 54°C.		MALS R 	MISSED APPROACH: Climb to 3300 on track 046° to EJLEL, left turn to ERQAS, and on track 138° to OTH VOR/DME and hold. *Missed approach requires minimum climb of 400 feet per NM to 1200. #Missed approach requires minimum climb of 255 feet per NM to 2400.
AWOS-3PT	SEATTLE CENTER	NORTH BEND TOWER*	GND CON
<b>135.075</b>	<b>127.55 254.35</b>	<b>118.45 (CTAF)</b>	<b>127.1</b>



NW-1, 25 FEB 2021 to 25 MAR 2021

NW-1, 25 FEB 2021 to 25 MAR 2021

See planview for multiple IF locations.		3300	EJLEL	ERQAS	tr 138°	OTH
FOGIX	OXVAK	↑ tr 046°				
1900	1300					
GP 3.00°	1300					
TCH 51						
	2.1 NM		3.9 NM			
CATEGORY	A	B	C	D		
RNP 0.11 DA*		394-5/8	378 (400-3/8)			
RNP 0.30 DA#		477-1 1/8	461 (500-1 1/8)			
RNP 0.30 DA		569-1 3/8	553 (600-1 3/8)			
<b>AUTHORIZATION REQUIRED</b>						
				HIRL Rwy 5-23 MIRL Rwy 13-31 REIL Rwys 13, 23 and 31		