

LOC I-OTG <b>111.7</b>	APP CRS <b>293°</b>	Rwy Idg TDZE Apt Elev	<b>5500</b> <b>1570</b> <b>1574</b>
---------------------------	------------------------	-----------------------------	---

# ILS or LOC RWY 29

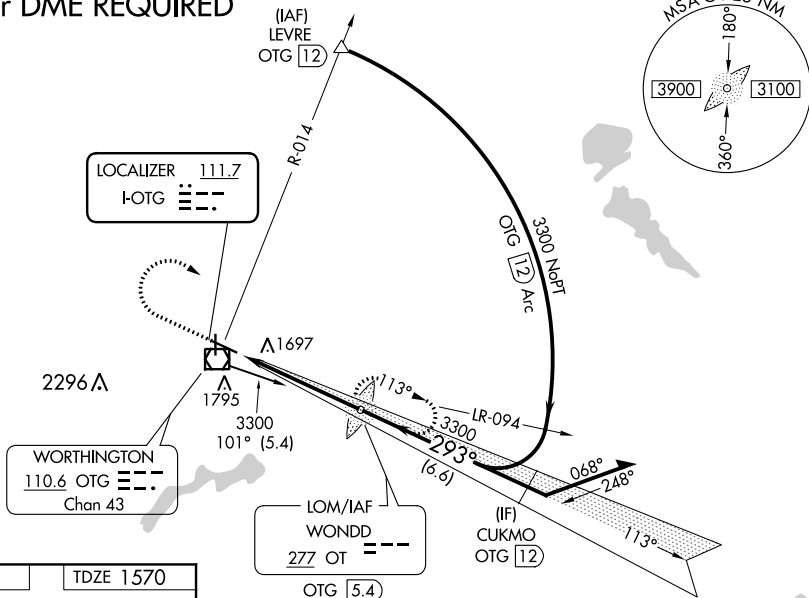
WORTHINGTON MUNI (OTG)

**NA** ADF or DME required. Autopilot coupled approach NA below 1770. When local altimeter setting not received, use Jackson altimeter setting and increase all DA 78 feet, all MDA 80 feet, increase S-LOC 29 Cat C and D and Circling Cat C visibility ¼ mile. For inoperative MALSR, when using Jackson altimeter setting, increase S-ILS 29 all Cats visibility to ¾ mile.

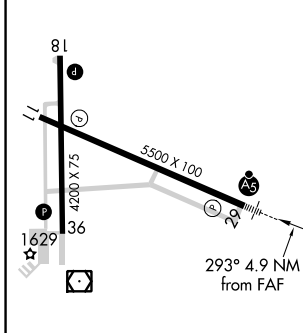
**MALSR** MISSED APPROACH: Climb to 2500 then climbing right turn to 3300 direct WONDD LOM/OTG 5.4 DME and hold.

AWOS-3PT <b>121.075</b>	MINNEAPOLIS CENTER <b>132.05 317.4</b>	UNICOM <b>122.8 (CTAF)</b>
----------------------------	---	-------------------------------

## ADF or DME REQUIRED



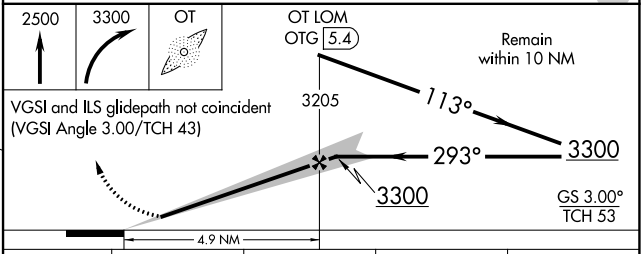
ELEV 1574	TDZE 1570
-----------	-----------



MIRL Rwy 18-36  
HIRL Rwy 11-29  
REIL Rwys 11, 18, and 36

FAF to MAP 4.9 NM

Knots	60	90	120	150	180
Min:Sec	4:54	3:16	2:27	1:58	1:38



CATEGORY	A	B	C	D
S-ILS 29	1770-½		200 (200-½)	
S-LOC 29	2000-½	430 (500-½)	2000-¾	430 (500-¾)
CIRCLING	2100-1	526 (600-1)	2100-1½	2140-2 526 (600-1½)

NC-1, 25 FEB 2021 to 25 MAR 2021

NC-1, 25 FEB 2021 to 25 MAR 2021