

WAAS CH <b>70729</b> <b>W07A</b>	APP CRS <b>073°</b>	Rwy Idg <b>5704</b> TDZE <b>109</b> Apt Elev <b>113</b>
--	------------------------	---

# RNAV (GPS) RWY 7

EXECUTIVE (ORL)

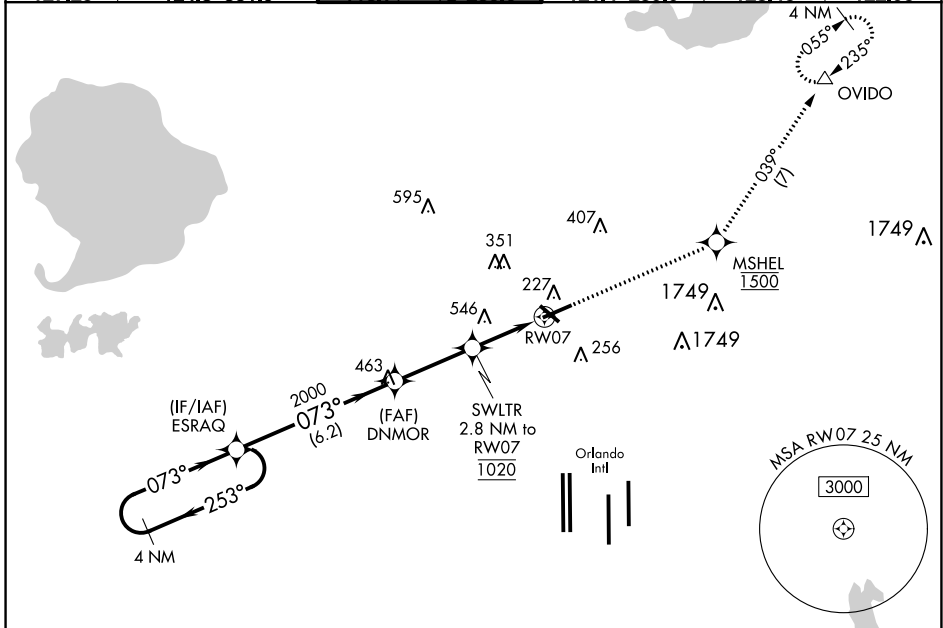
RNP APCH

For uncompensated Baro-VNAV systems, LNAV/VNAV NA below 2°C or above 54°C. Circling Rwy 31 NA at night. For inop ALS, increase LPV all Cats visibility to RVR 4500, increase LNAV/VNAV all Cats visibility to RVR 5000, increase LNAV Cat A/B visibility to RVR 5500 and Cats C/D to 1 1/4 SM. In minimum visibility conditions, bright lights on highway 1/2 mile south of airport may be mistaken for runway lights. Rwy 7 helicopter visibility reduction below 3/4 SM NA.



**MISSED APPROACH:**  
Climb to 1500 direct MSHEL, cross MSHEL at 1500, then climb to 1600 on track 039° to OVIDO and hold.

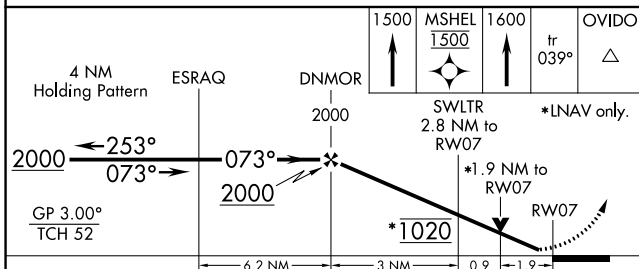
ATIS <b>127.25</b>	ORLANDO APP CON <b>124.8 351.9</b>	EXECUTIVE TOWER ★ <b>118.7 (CTAF) 0 239.0</b>	GND CON <b>121.4 239.0</b>	CLNC DEL <b>128.45</b>	UNICOM <b>122.95</b>
-----------------------	---------------------------------------	--	-------------------------------	---------------------------	-------------------------



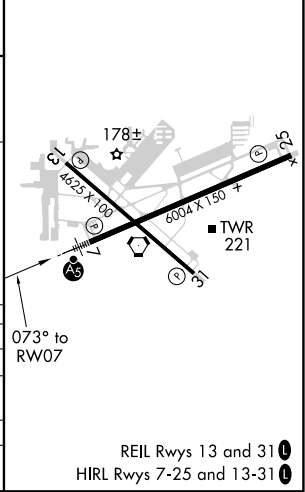
SE-3, 25 FEB 2021 to 25 MAR 2021

SE-3, 25 FEB 2021 to 25 MAR 2021

ELEV 113	<b>D</b> TDZE 109
----------	-------------------



CATEGORY	A	B	C	D
LPV DA		391/40	282 (300-3/4)	
LNAV/VNAV DA		447/40	338 (400-3/4)	
LNAV MDA	740/40	631 (700-3/4)	740-1 3/8	631 (700-1 3/8)
<b>C</b> CIRCLING	740-1	627 (700-1)	860-2 1/4 747 (800-2 1/4)	860-2 1/2 747 (800-2 1/2)



REIL Rwy 13 and 31  
HIRL Rwy 7-25 and 13-31