

# ILS or LOC RWY 7

## EXECUTIVE (ORL)

LOC I-ORL <b>109.9</b>	APP CRS <b>073°</b>	Rwy Idg <b>5704</b>
		TDZE <b>109</b>
		Apt Elev <b>113</b>

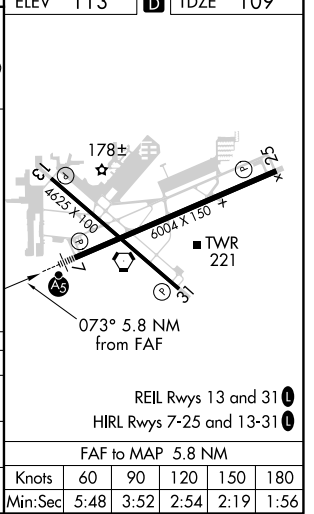
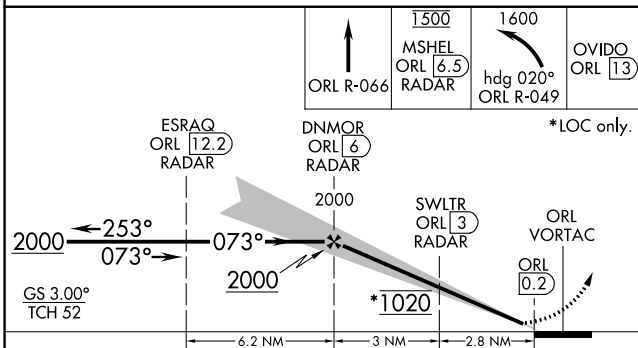
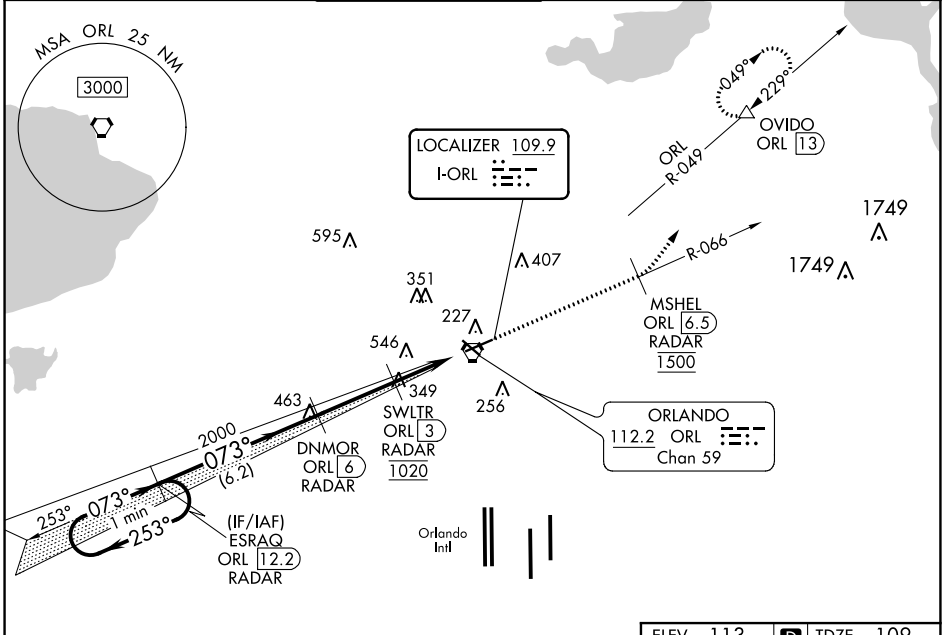
RADAR required for procedure entry. DME or RADAR required.

⚠ Circling Rwy 31 NA at night. In minimum visibility conditions, bright lights on highway 1/2 mile south of airport may be mistaken for runway lights. For inop ALS, increase S-ILS 7 all Cats visibility to RVR 4500 and S-LOC 7 Cats A/B visibility to RVR 5500. Rwy 7 helicopter visibility reduction below 3/4 SM NA.



MISSED APPROACH: Climb on ORL VORTAC R-066 to cross MSHEL/ORL 6.5 DME/RADAR at 1500 then climbing left turn to 1600 on heading 020° and ORL VORTAC R-049 to OVIDO/ORL 13 DME and hold.

ATIS <b>127.25</b>	ORLANDO APP CON <b>124.8 351.9</b>	EXECUTIVE TOWER ★ <b>118.7(CTAF) 0 239.0</b>	GND CON <b>121.4 239.0</b>	CLNC DEL <b>128.45</b>	UNICOM <b>122.95</b>
-----------------------	---------------------------------------	---	-------------------------------	---------------------------	-------------------------



CATEGORY	A	B	C	D
S-ILS 7	391/40 282 (300-3/4)			
S-LOC 7	660/40	551 (600-3/4)	660/60	551 (600-1 1/4)
CIRCLING	660-1 547 (600-1)	680-1 567 (600-1)	860-2 1/4 747 (800-2 1/4)	860-2 1/2 747 (800-2 1/2)

SE-3, 25 FEB 2021 to 25 MAR 2021

SE-3, 25 FEB 2021 to 25 MAR 2021