

WAAS CH <b>87027</b> <b>W32A</b>	APP CRS <b>322°</b>	Rwy Idg TDZE Apt Elev	<b>3510</b> <b>545</b> <b>556</b>
--	------------------------	-----------------------------	---

# RNAV (GPS) RWY 32

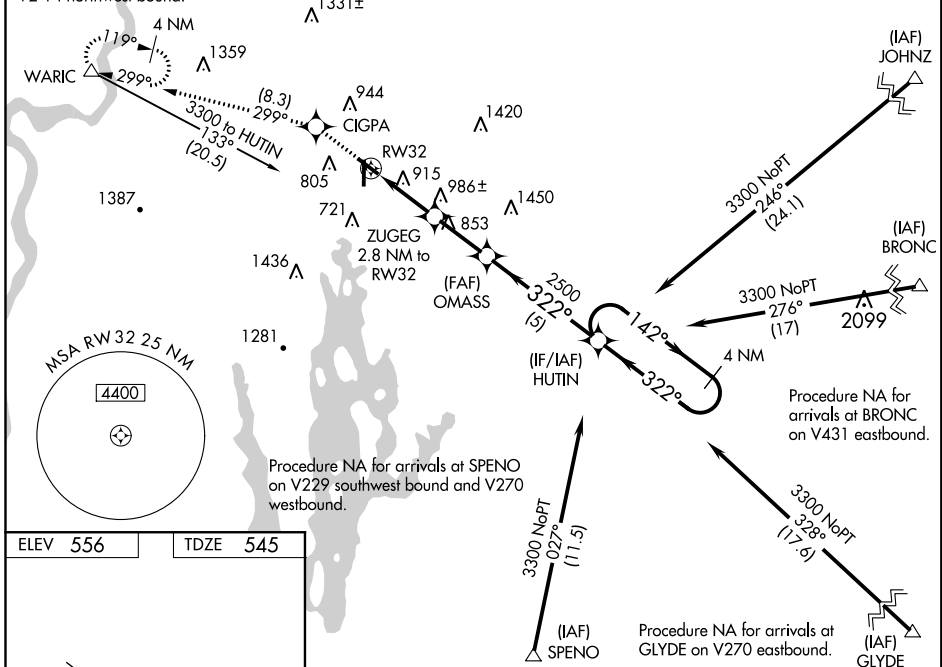
ORANGE MUNI (O.R.E.)

**⚠** Circling to Rwy 1-19 NA at night. For uncompensated Baro-VNAV systems, LNAV/VNAV NA below -16°C (4°F) or above 54°C (130°F). DME/DME RNP-0.3 NA. Helicopter visibility reduction below 3/4 SM NA. Baro-VNAV and VDP NA when using Keene altimeter setting. When local altimeter setting not received, use KEENE altimeter setting and increase all DA 55 feet and all MDA 60 feet; increase LPV all Cats visibility 1/8 mile, LNAV/VNAV all Cats and LNAV and Circling Cat B visibility 1/4 mile.

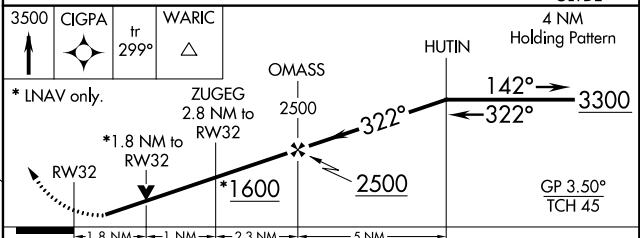
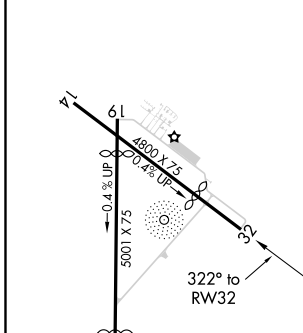
**MISSED APPROACH:** Climb to 3500 direct CIGPA and on track 299° to WARIC and hold, continue climb-in-hold to 3500.

<b>ASOS</b> <b>135.675</b>	<b>BOSTON CENTER</b> <b>123.75 338.2</b>	<b>UNICOM</b> <b>122.8 (CTAF) 0</b>
-------------------------------	---	--

Procedure NA for arrivals at WARIC on V93 southwest bound and V2-14 northwest bound. Procedure NA for arrivals at JOHNZ on V106 eastbound.



ELEV <b>556</b>	TDZE <b>545</b>
-----------------	-----------------



CATEGORY	A	B	C	D
LPV DA	873-1	328 (400-1)		NA
LNAV/VNAV DA	1288-2¼	743 (800-2¼)		NA
LNAV MDA	1240-1	695 (700-1)		NA
CIRCLING	1260-1	704 (800-1)		NA

NE-1, 25 FEB 2021 to 25 MAR 2021

NE-1, 25 FEB 2021 to 25 MAR 2021