

WAAS CH 77937 W10D	APP CRS 090°	Rwy Idg TDZE Apt Elev	7500 680 680
--	------------------------	-----------------------------	---

RNAV (GPS) Y RWY 10R

CHICAGO O'HARE INTL (ORD)

▼ DME/DME RNP-0.3 NA. Simultaneous approach authorized. For uncompensated Baro-VNAV systems, LNAV/VNAV NA below -19°C (-2°F) or above 54°C (130°F). LNAV procedure NA during simultaneous operations. Use of FD or AP providing RNAV track guidance required during simultaneous operations. Inop table does not apply to LPV all Cats. For inop ALS, increase LNAV Cat A and B visibility to 1 SM. Rwy 10R helicopter visibility reduction below ¾ SM NA.

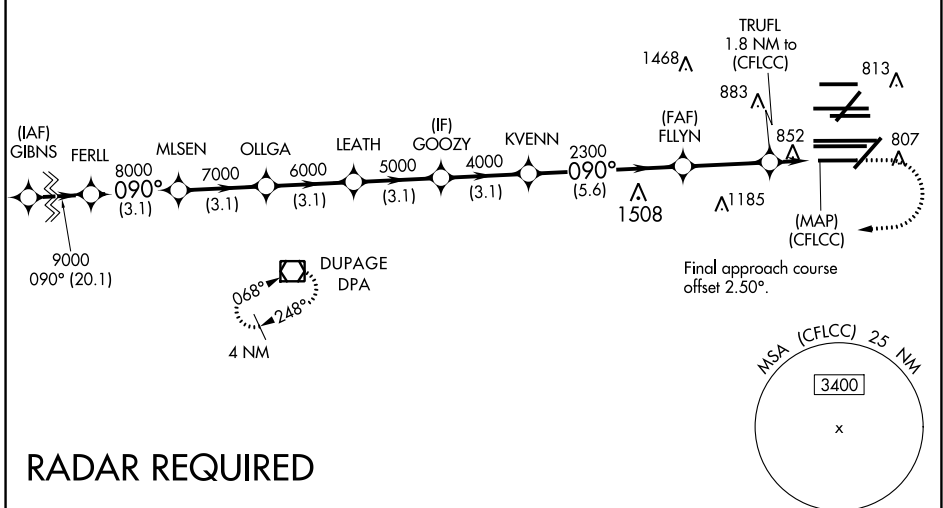
ALSF-2

MISSED APPROACH: Climb to 1200 then climbing right turn to 4000 direct DPA VOR/DME and hold.

D-ATIS 135.4 282.225	CHICAGO APP CON 119.0 292.125	O'HARE TOWERS 128.15 348.0 (Rwy 9L/27R) 133.0 348.0 (10R/28L) 120.75 121.15 126.9 132.7 348.0 (CENTER)			
--	---	--	--	--	--

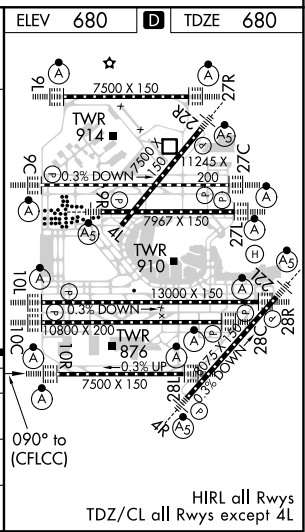
GND CON (TWR CENTER) 121.75 (OBND)	121.9 (IBND)
124.125 (TWR NORTH)	118.05 (TWR SOUTH)
226.675 (ALL TWR)	

CLNC DEL 121.6	CPDLC
--------------------------	-------



RADAR REQUIRED

	1200	4000	DPA						
	*LNAV only.								
GP 3.00 TCH 55	9000	8000	7000	6000	5000	4000	2300	*1300	
	3.1 NM	3.1 NM	3.1 NM	3.1 NM	3.1 NM	5.6 NM	3.1 NM	0.6	1.2
CATEGORY	A		B		C		D		
LPV DA	930-¾		250 (300-¾)						
LNAV/VNAV DA	1157-1½		477 (500-1½)						
LNAV MDA	1120-¾		440 (500-¾)						



HIRL all Rwys
TDZ/CL all Rwys except 4L

EC-3, 25 FEB 2021 to 25 MAR 2021

EC-3, 25 FEB 2021 to 25 MAR 2021