

LOC/DME I-ZJ <b>110.75</b> Chan 44 (Y)	APP CRS <b>094°</b>	Rwy Idg TDZE Apt Elev	<b>7500</b> <b>680</b> <b>680</b>
--	------------------------	-----------------------------	---

# ILS Z or LOC Z RWY 10R

CHICAGO O'HARE INTL (ORD)

RNAV 1-GPS or RADAR required for procedure entry. DME or RADAR required.

From GIBNS: RNAV-1 GPS required.

Simultaneous approach authorized.  
For inop ALS, increase S-LOC 10R Cat C and D visibility to RVR 6000.



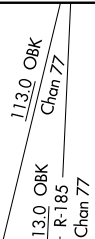
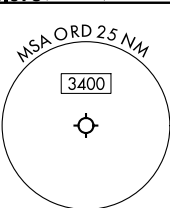
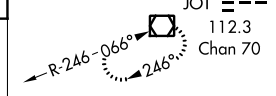
MISSED APPROACH: Climb to 1200 then climbing right turn to 4000 direct DPA VOR/DME and hold.

CHICAGO APP CON	O'HARE TOWERS	GND CON (TWR CENTER)	CLNC DEL
<b>119.0 292.125</b>	<b>128.15 348.0</b> (Rwy 9L/27R) <b>133.0 348.0</b> (10R/28L) <b>126.9 132.7 348.0</b> (CENTER)	<b>124.125</b> (TWR NORTH) <b>121.75</b> (OBND) <b>118.05</b> (TWR SOUTH) <b>121.9</b> (IBND) <b>226.675</b> (ALL TWRs)	<b>121.6</b>

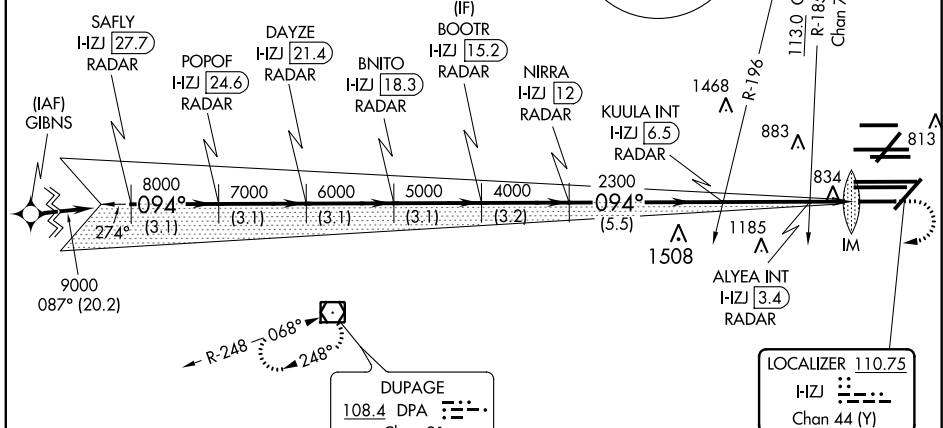
D-ATIS  
**135.4**  
**282.225**

ALTERNATE MISSED APCH FIX

JOLIET  
JOT  
112.3  
Chan 70



CPDLC



EC-3, 25 FEB 2021 to 25 MAR 2021

EC-3, 25 FEB 2021 to 25 MAR 2021

SAFLY I-ZJ 27.7 RADAR	DAYZE I-ZJ 21.4 RADAR	BOOTR I-ZJ 15.2 RADAR	POPOF I-ZJ 24.6 RADAR	BNITO I-ZJ 18.3 RADAR	NIIRRA I-ZJ 12 RADAR	KUULA INT I-ZJ 6.5 RADAR	ALYEA INT I-ZJ 3.4 RADAR
9000	8000	7000	6000	5000	4000	2300	1220
3.1 NM	3.1 NM	3.1 NM	3.1 NM	3.2 NM	5.5 NM	3.1 NM	0.7 NM
A		B		C		D	
S-ILS 10R		880/18		200 (200-½)			
S-LOC 10R		1100/24		420 (500-½)			

