

ILS PRM RWY 10C (CLOSE PARALLEL) CHICAGO O'HARE INTL (ORD)

LOC/DME I-SXH 108.95 Chan 26(Y)	APP CRS 093°	Rwy Idg 10540 TDZE 669 Apt Elev 680
--	------------------------	--

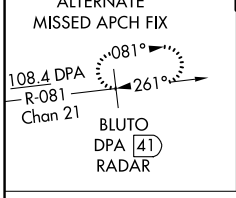
RNAV 1-GPS or RADAR required for procedure entry. DME or RADAR required.
From GIBNS: RNAV-1 GPS required.

Simultaneous approach authorized.
Use of FD or AP required during simultaneous operations.
Dual VHF comm required. See additional requirements on AAUP.

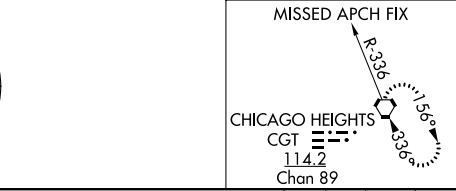
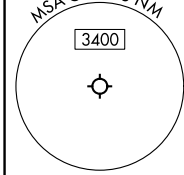
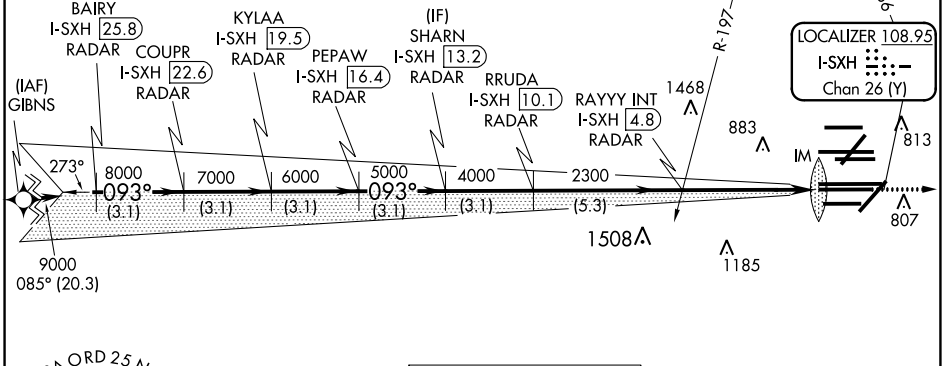
ALS-F-2

MISSED APPROACH: Climb to 4000 on heading 093° and CGT VORTAC R-336 to CGT VORTAC and hold.

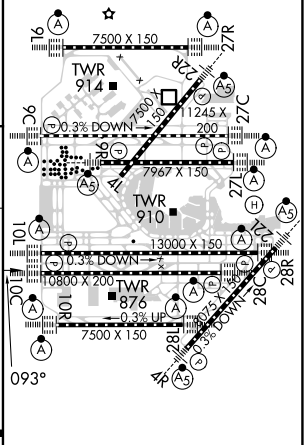
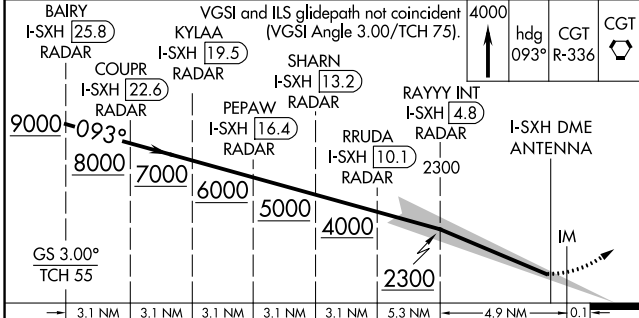
D-ATIS 135.4 282.225	CHICAGO APP CON 119.0 292.125	O'HARE TOWERS 128.15 348.0 (Rwy 9L/27R) 133.0 348.0 (10R/28L) 120.75 121.15 126.9 132.7 348.0 (CENTER) PRM 119.625	GND CON (TWR CENTER) 121.75 (OBND) (TWR NORTH) 121.05 (TWR SOUTH) 121.9 226.675 (ALL TWRs)
--	---	---	---



CLNC DEL 121.6	CPDLC
--------------------------	-------



ELEV 680	TDZE 669
----------	----------



CATEGORY	A	B	C	D
S-ILS 10C		869/18	200 (200-1/2)	

EC-3, 25 FEB 2021 to 25 MAR 2021

EC-3, 25 FEB 2021 to 25 MAR 2021