

LOC/DME I-VZE 108.95 Chan 26 (Y)	APP CRS 273°	Rwy Idg 10800 TDZE 651 Apt Elev 680
---	------------------------	--

ILS or LOC RWY 28C

CHICAGO O'HARE INTL (ORD)

From VOGOIR: RNAV 1-GPS required.
Aircraft not GPS equipped - RADAR required for procedure entry.
DME or RADAR required.

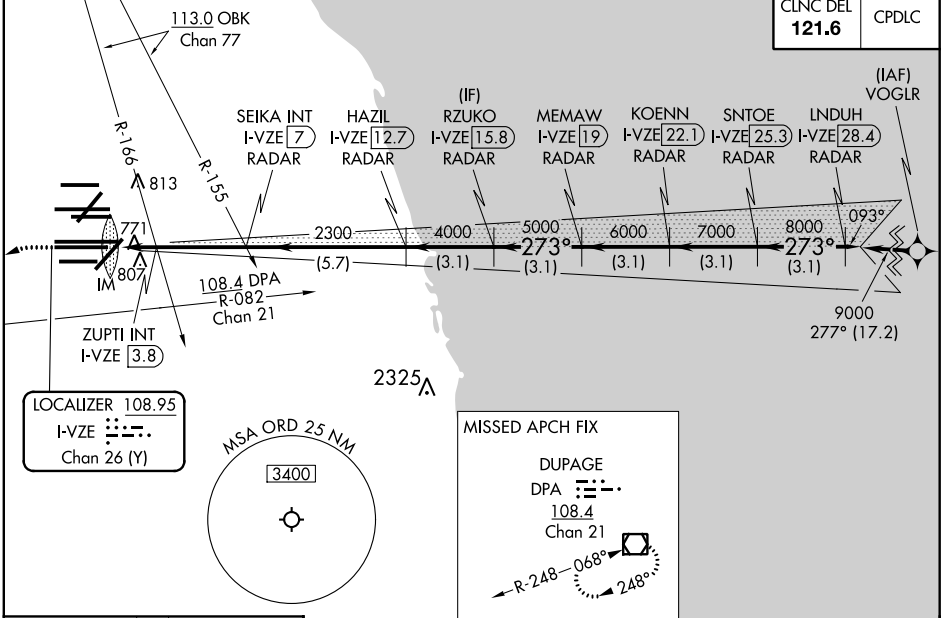


MISSED APPROACH: Climb to 1100 then climbing left turn to 4000 on heading 215° and DPA VOR/DME R-082 to DPA VOR/DME and hold.

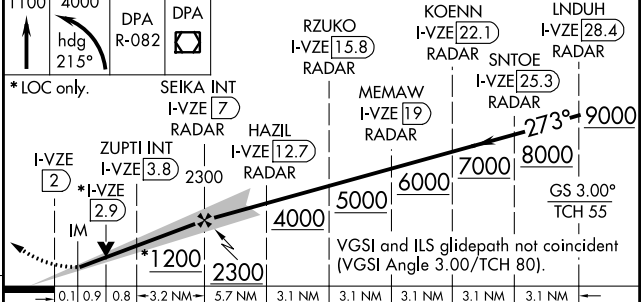
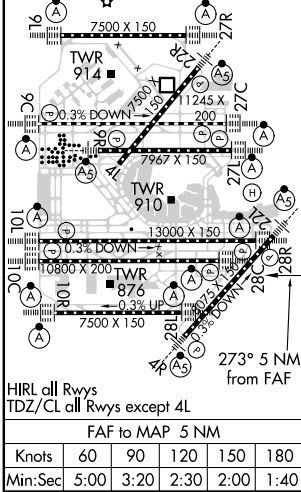
Simultaneous approach authorized.

D-ATIS 135.4 282.225	CHICAGO APP CON 119.0 292.125	O'HARE TOWERS 128.15 348.0 (Rwy 9L/27R) 133.0 348.0 (10R/28L) 120.75 121.15 126.9 132.7 348.0 (CENTER)	GND CON (TWR CENTER) 121.75 (OBND) (TWR NORTH) 121.9 (IBND) (TWR SOUTH) 226.675 (ALL TWRs)
--	---	--	--

CLNC DEL 121.6	CPDLC
--------------------------	-------



ELEV 680	D	TDZE 651
-----------------	----------	-----------------



1100	4000	DPA R-082	DPA	RZUKO I-VZE 15.8 RADAR	KOENN I-VZE 22.1 RADAR	LNDUH I-VZE 28.4 RADAR
*LOC only.						
SEIKA INT I-VZE 7 RADAR	HAZIL I-VZE 12.7 RADAR	ZUPTI INT I-VZE 3.8	MEMAW I-VZE 19 RADAR	SNTOE I-VZE 25.3 RADAR	273° 9000	
I-VZE 2	I-VZE 2.9	2300	5000	6000	7000	8000
VGS1 and ILS glidepath not coincident (VGS1 Angle 3.00/TCH 80).						
0.1	0.9	0.8	3.2 NM	5.7 NM	3.1 NM	3.1 NM
CATEGORY A B C D						
S-ILS 28C		851/18 200 (200-½)				
S-LOC 28C		1200/24 549 (600-½)		1200/60 549 (600-1¼)		
ZUPTI FIX MINIMUMS (DUAL VOR RECEIVERS OR DME REQUIRED)						
S-LOC 28C		1040/24 389 (400-½)		1040/35 389 (400-¾)		

EC-3, 25 FEB 2021 to 25 MAR 2021

EC-3, 25 FEB 2021 to 25 MAR 2021