

WAAS CH 63115 W12A	APP CRS 121°	Rwy ldg 5702 TDZE 791 Apt Elev 798
--	------------------------	---

RNAV (GPS) RWY 12

THOMASTON-UPSON COUNTY (OPN)

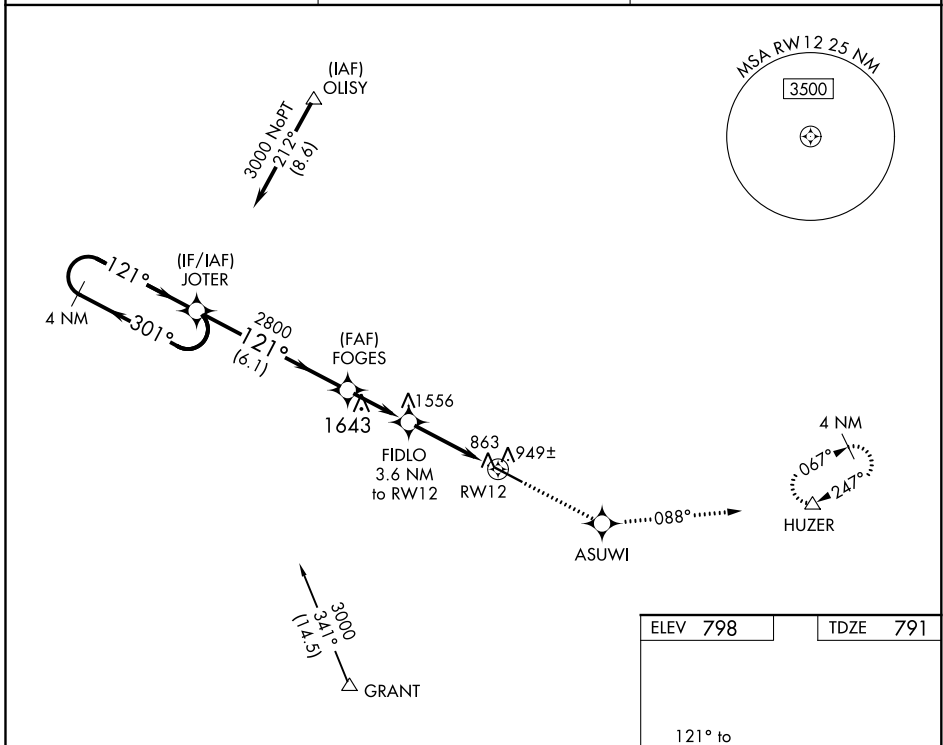
⚠ DME/DME RNP-0.3 NA. Visibility reduction by helicopters NA. When local altimeter setting not received, use Atlanta Rgnl Falcon Field altimeter setting and increase all DA 68 feet and all MDA 80 feet; increase LPV visibility ¼ mile all Cats, LNAV Cat D visibility ¼ mile.

MISSED APPROACH: Climb to 3000 direct ASUWI and via track 088° to HUZER and hold.

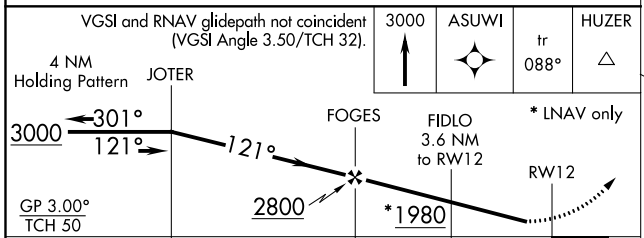
AWOS-3
133.975

ATLANTA APP CON ★
124.2 279.6

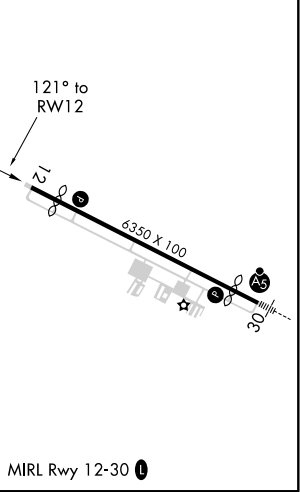
UNICOM
122.8 (CTAF) ①



ELEV 798	TDZE 791
----------	----------



CATEGORY	A	B	C	D
LPV DA	1063-1		272 (300-1)	
LNAV MDA	1200-1	409 (500-1)	1200-1¼	409 (500-1¼)
CIRCLING	1300-1	502 (600-1)	1300-1½	562 (600-2)



SE-4, 25 FEB 2021 to 25 MAR 2021

SE-4, 25 FEB 2021 to 25 MAR 2021