

WAAS CH <b>73027</b> <b>W36A</b>	APP CRS <b>359°</b>	Rwy Idg <b>5210</b> TDZE <b>74</b> Apt Elev <b>75</b>
--	------------------------	---

# RNAV (GPS) RWY 36

ST LANDRY PARISH-AHART FIELD (OPL)

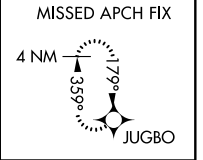
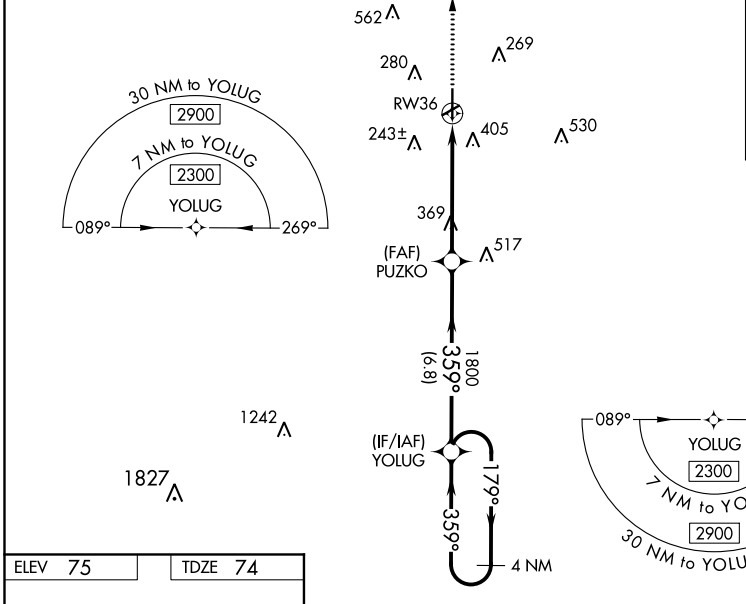
**⚠** Baro-VNAV NA when using Lafayette altimeter setting. For uncompensated Baro-VNAV systems, LNAV/VNAV NA below -15°C (5°F) or above 43°C (109°F). When VGSI inop, Straight-in/Circling Rwy 36 procedure NA at night. DME/DME RNP-0.3 NA. Visibility reduction by helicopters NA. Circling to Rwy 6/24 NA at night. When local altimeter setting not received, use Lafayette altimeter setting and increase all DA 56 feet and all MDA 60 feet, increase LPV all Cats and LNAV Cat C and D visibility 1/8 mile and LNAV/VNAV all Cats and Circling Cat C and D visibility 1/4 mile.

**MISSED APPROACH:** Climb to 2000 direct JUGBO and hold.

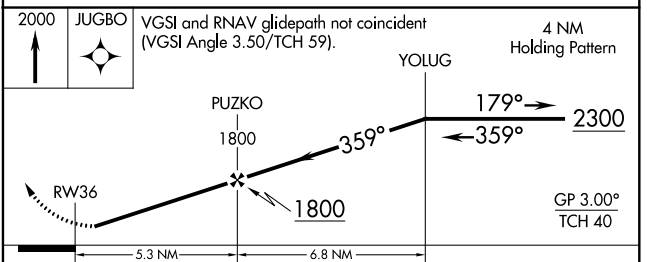
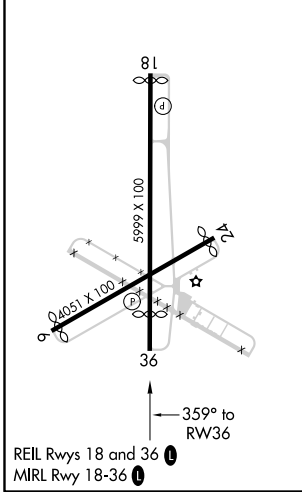
AWOS-3PT  
**118.775**

LAFAYETTE APP CON ★  
**128.7 268.7**

UNICOM  
**123.0 (CTAF) 0**



ELEV **75** TDZE **74**



CATEGORY	A	B	C	D
LPV DA	351-1		277 (300-1)	
LNAV/VNAV DA	693-2¼		619 (700-2¼)	
LNAV MDA	620-1	546 (600-1)	620-1½	546 (600-1½)
CIRCLING	780-1	705 (800-1)	780-2 705 (800-2)	780-2¼ 705 (800-2¼)

SC-4, 25 FEB 2021 to 25 MAR 2021

SC-4, 25 FEB 2021 to 25 MAR 2021