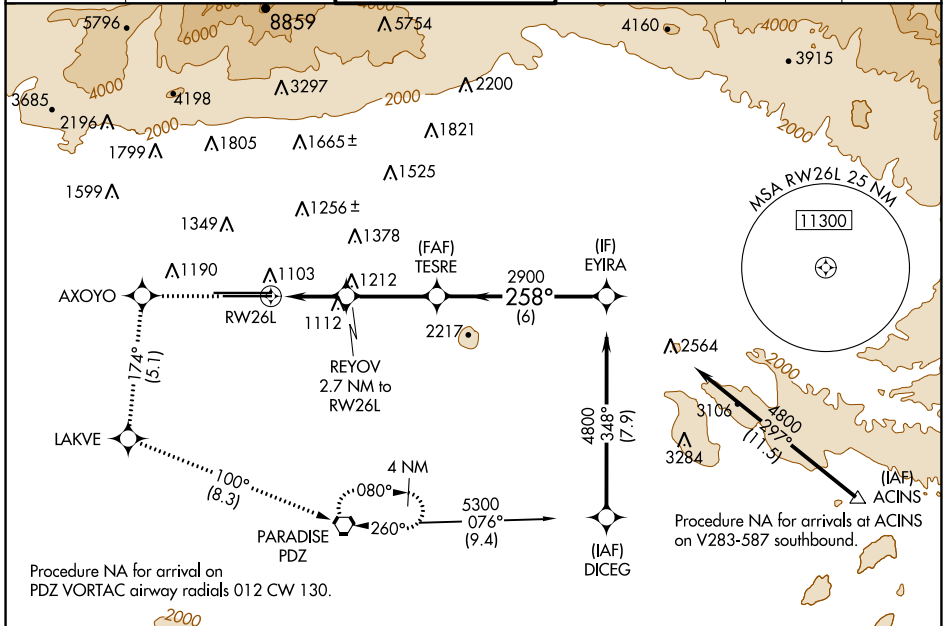


WAAS CH 90407 W 26B	APP CRS 258°	Rwy Idg 10200 TDZE 926 Apt Elev 944
---	------------------------	--

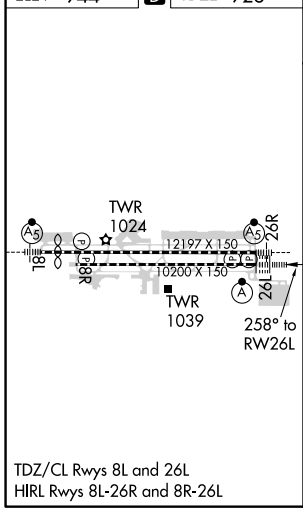
RNAV (GPS) Y RWY 26L

ONTARIO INTL (ONT)

▼ For uncompensated Baro-VNAV systems, procedure NA below 2°C (36°F) or above 54°C (130°F). Circling NA north of Rwy 8L-26R. DME/DME RNP-0.3 NA.	ALSIF-2	MISSED APPROACH: Climb to 3700 direct AXOYO and on track 174° to LAKVE and on track 100° to PDZ VORTAC and hold.			
D-ATIS 124.25	SOCAL APP CON 127.0 318.2	ONTARIO TOWER 120.6 360.775	GND CON 121.9 257.8	CLNC DEL 118.1	CPDLC



ELEV 944	D	TDZE 926
----------	----------	----------



3700	AXOYO	tr 174°	LAKVE	tr 100°	PDZ	VGSI and RNAV glidepath not coincident (VGSI Angle 3.00/TCH 74).
			REYOY 2.7 NM to RWY 26L		TESRE 2900	EYIRA 4800
			1.2 NM to RWY 26L		1840	GP 3.00° TCH 58
					126/24	200 (200-½)
					1264/30	338 (400-⅝)
					1380/24 454 (500-½)	1380/45 454 (500-⅞)
					1500-1½ 556 (600-1½)	1540-2 596 (600-2)

SW-3, 25 FEB 2021 to 25 MAR 2021

SW-3, 25 FEB 2021 to 25 MAR 2021