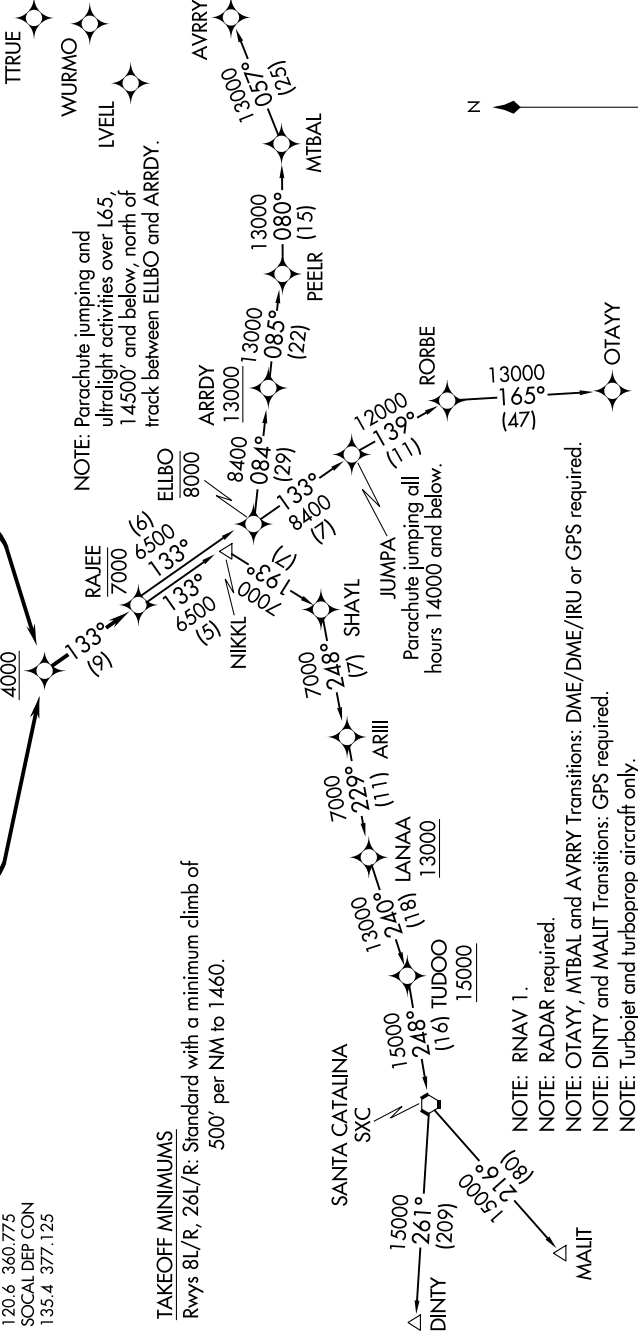


SW-3, 25 FEB 2021 to 25 MAR 2021

D-ATIS 124.25  
CLNC DEL 118.1  
CPDIC  
GND CON 121.9 257.8  
ONTARIO TOWER 120.6 360.775  
SOCAL DEP CON 135.4 377.125

**TAKEOFF MINIMUMS**  
Rwys 8L/R, 26L/R: Standard with a minimum climb of 500' per NM to 1460.

**TOP ALTITUDE  
DINTY AND MALIT TRANSITIONS:  
15000**  
**ALL OTHER TRANSITIONS:  
ASSIGNED BY ATC**



- NOTE: RNAV 1.
- NOTE: RADAR required.
- NOTE: OTAYY, MTBAL and AVRRY Transitions: DME/DME/IRU or GPS required.
- NOTE: DINTY and MALIT Transitions: GPS required.
- NOTE: Turbojet and turboprop aircraft only.
- NOTE: MALIT and DINTY Transitions available between 2200 and 0600 local only.
- NOTE: DINTY Transition ATC assigned only.
- NOTE: For non-GPS equipped aircraft on the AVRRY Transition, JULIAN VORTAC (JUL) must be operational.

NOTE: Chart not to scale.

(NARRATIVE ON FOLLOWING PAGE)

SW-3, 25 FEB 2021 to 25 MAR 2021