

LOC/DME I-ONT 109.7 Chan 34	APP CRS 258°	Rwy Idg TDZE Apt Elev	26R 12197 932 944	26L 10200 926 944
---	------------------------	-----------------------------	---	---

ILS or LOC RWY 26R

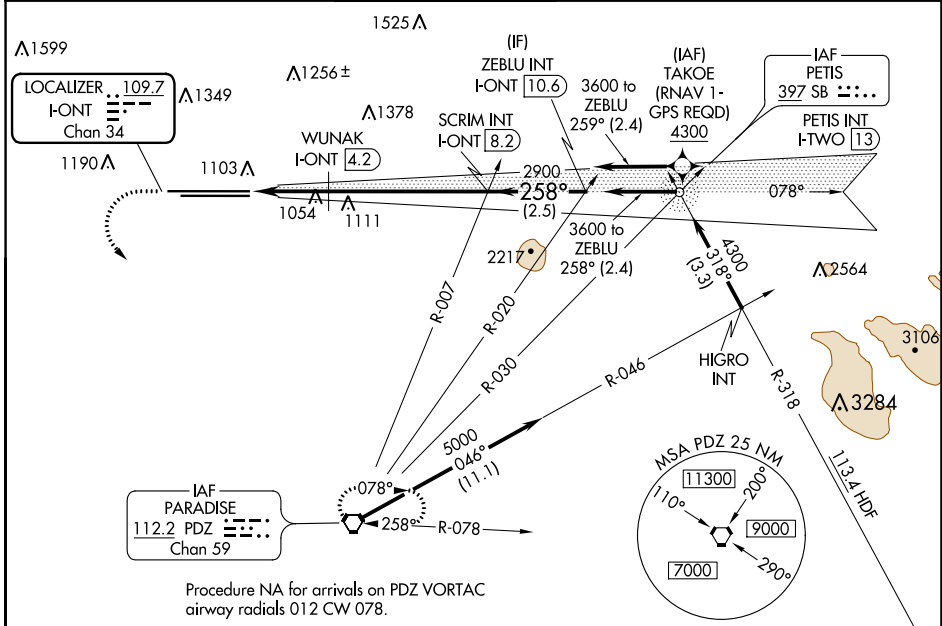
ONTARIO INTL (ONT)

⚠ Circling NA north of Rwy 8L-26R. Inop table does not apply to Sidestep 26L Cat A. For inop ALS, increase Sidestep 26L Cat B visibility to 1½ SM and Sidestep 26L Cat C to 2½ SM. #RVR 1800 authorized with use of FD or AP or HUD to DA.

MALSR Rwy 26R **ALS-F-2** Rwy 26L

MISSED APPROACH: Climb to 2200 then climbing left turn to 4000 direct PDZ VORTAC and hold.

D-ATIS 124.25	SOCAL APP CON 127.0 318.2	ONTARIO TOWER 120.6 360.775	GND CON 121.9 257.8	CLNC DEL 118.1	CPDLC
-------------------------	-------------------------------------	---------------------------------------	-------------------------------	--------------------------	-------



ELEV 944 **D** TDZE 26R 932 TDZE 26L 926

2200 4000 PDZ

VGSI and ILS glidepath not coincident (VGSI Angle 3.00/TCH 75).

ZEBLU INT I-ONT 10.6

WUNAK I-ONT 4.2

SCRIM INT I-ONT 8.2

* LOC only

I-ONT 2.2

* I-ONT 3.3

1.2 NM 0.9 4 NM 2.5 NM

258° 6 NM from FAF

TWR 1024

TWR 1039

12197 X 150

10200 X 150

26R

26L

GS 3.00° TCH 60

CATEGORY	A	B	C	D
S-ILS 26R#	1132/24		200 (200-½)	
S-LOC 26R	1620/24	688 (700-½)	1620-1½	688 (700-1½)
SIDESTEP 26L	1720/55	794 (800-1)	1720-1¾ 794 (800-1¾)	1720-2 794 (800-2)
WUNAK FIX MINIMUMS (DME REQUIRED)				
S-LOC 26R	1360/24	428 (500-½)	1360/40	428 (500-¾)
C CIRCLING	1620-1	676 (700-1)	1620-2 676 (700-2)	1620-2¼ 676 (700-2¼)

SW-3, 25 FEB 2021 to 25 MAR 2021

SW-3, 25 FEB 2021 to 25 MAR 2021