

LOC/DME I-TWO 111.35 Chan 50 (Y)	APP CRS 258°	Rwy Idg TDZE Apt Elev	26L 10200 926 944	26R 12197 932 944
-----------------------------------------------	------------------------	-----------------------------	-------------------------------------------------	-------------------------------------------------

ILS or LOC RWY 26L

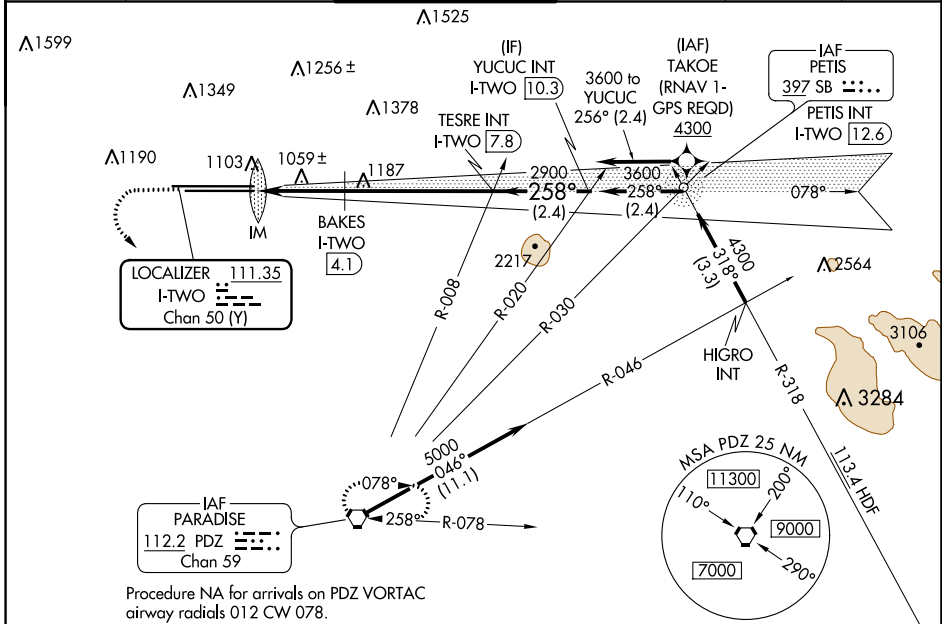
ONTARIO INTL (ONT)

⚠ Circling NA north of Rwy 8L-26R. Inop table does not apply to Sidestep 26R Cat A. For inop ALS, increase S-LOC Rwy 26L Cat C/D and Sidestep 26R Cat C visibility to 2½ SM, and Sidestep 26R Cat B visibility to 1¼ SM, and BAKES DME minimums S-LOC 26L Cat C/D to RVR 6000.

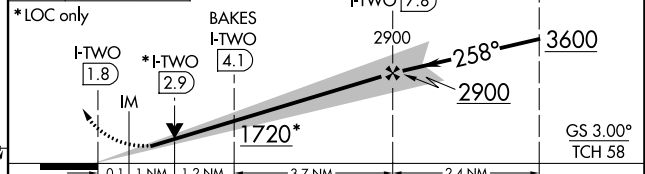
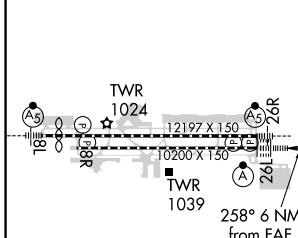
ALS-2 Rwy 26L MALS Rwy 26R

MISSED APPROACH: Climb to 2200 then climbing left turn to 4000 direct PDZ VORTAC and hold.

D-ATIS 124.25	SOCAL APP CON 127.0 318.2	ONTARIO TOWER 120.6 360.775	GND CON 121.9 257.8	CLNC DEL 118.1	CPDLC
-------------------------	-------------------------------------	---------------------------------------	-------------------------------	--------------------------	-------



ELEV 944	D TDZE 26L 926 TDZE 26R 932	2200 4000 PDZ	VGSI and ILS glidepath not coincident (VGSI Angle 3.00/TCH 74).
----------	---------------------------------------	---------------	-----------------------------------------------------------------



CATEGORY	A	B	C	D
S-ILS 26L	1126/18 200 (200-½)			
S-LOC 26L	1720/24 794 (800-½)	1720/40 794 (800-¾)	1720-1¾ 788 (800-1¾)	1720-2 788 (800-2)
SIDESTEP 26R	1720/55	788 (800-1)	1720-1¾ 788 (800-1¾)	1720-2 788 (800-2)
BAKES DME MINIMUMS				
S-LOC 26L	1340/24	414 (400-½)	1340/40	414 (400-¾)
C CIRCLING	1720-1 776 (800-1)	1720-1¼ 776 (800-1¼)	1720-2½	776 (800-2½)

TDZ/CL Rwy 8L and 26L
HIRL Rwy 8L-26R and 8R-26L

FAF to MAP 6 NM

Knots	60	90	120	150	180
Min:Sec	6:00	4:00	3:00	2:24	2:00

SW-3, 25 FEB 2021 to 25 MAR 2021

SW-3, 25 FEB 2021 to 25 MAR 2021