

WAAS CH <b>78207</b> W15A	APP CRS <b>146°</b>	Rwy Idg TDZE Apt Elev	<b>5006</b> <b>2193</b> <b>2193</b>
---------------------------------	------------------------	-----------------------------	---

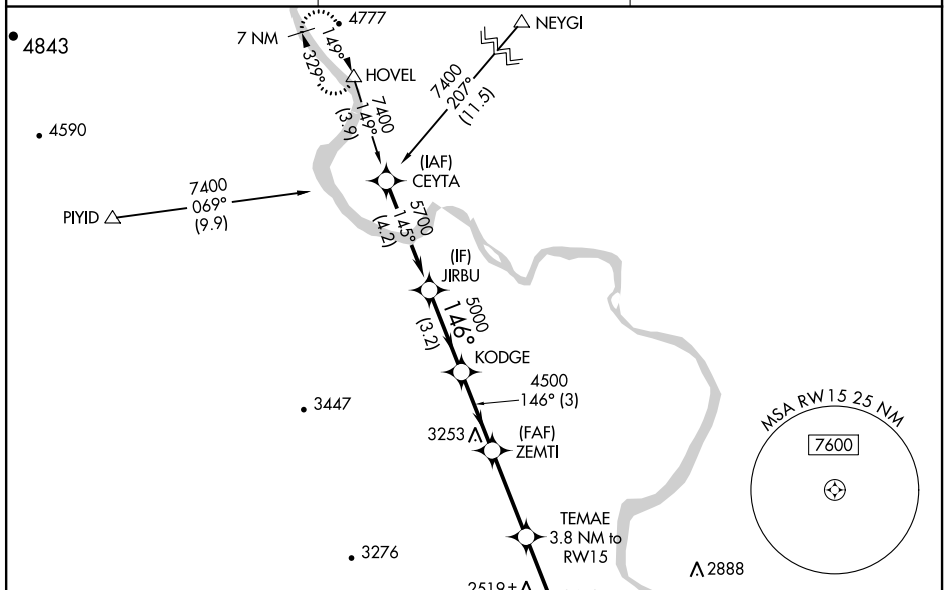
# RNAV (GPS) RWY 15

ONTARIO MUNI (ONO)

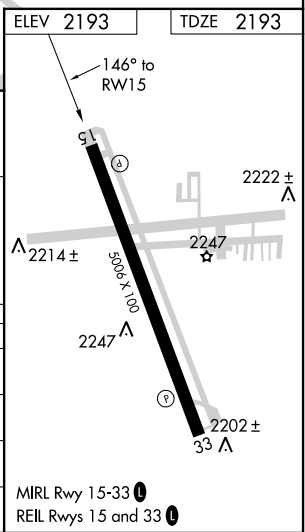
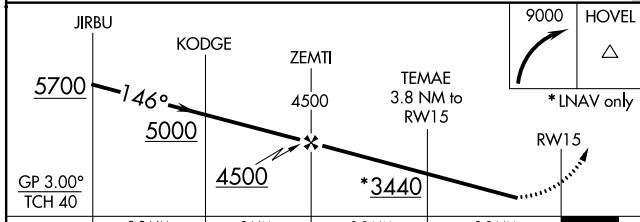
**⚠** Baro-VNAV NA when using Caldwell altimeter setting. For uncompensated Baro-VNAV systems, LNAV/VNAV NA below -18°C (0°F) or above 54°C (130°F). DME/DME RNP-0.3 NA.  
 When local altimeter setting not received, use Caldwell altimeter setting and increase LPV DA to 2867 feet, LNAV/VNAV DA to 2911 feet, and all MDA 100 feet; increase LPV visibility, all Cats by ½ SM, increase LNAV visibility Cats C/D and Circling Cat C by ¼ SM. Rwy 15 helicopter visibility reduction below 1 SM NA. Straight-in Rwy 15 NA at night, Circling Rwy 15 NA at night.

**MISSED APPROACH:**  
 Climbing right turn to 9000 direct HOVEL and hold, continue climb-in-hold to 9000.

ASOS <b>135.275</b>	SALT LAKE CENTER <b>128.05 306.95</b>	UNICOM <b>122.8 (CTAF) 0</b>
------------------------	--	---------------------------------



ELEV 2193	TDZE 2193
-----------	-----------



CATEGORY	A	B	C	D
LPV DA	2769-2 576 (600-2)			
LNAV/VNAV DA	2814-2½ 621 (700-2½)			
LNAV MDA	2780-1 587 (600-1)	2780-1¾ 587 (600-1¾)		
<b>C</b> CIRCLING	2760-1 567 (600-1)	2800-1 607 (700-1)	3120-2¾ 927 (1000-2¾)	3240-3 1047 (1100-3)

MIRL Rwy 15-33 0  
 REIL Rwys 15 and 33 0

NW-1, 25 FEB 2021 to 25 MAR 2021

NW-1, 25 FEB 2021 to 25 MAR 2021