

APP CRS	Rwy Idg	5199
120°	TDZE	656
	Apt Elev	656

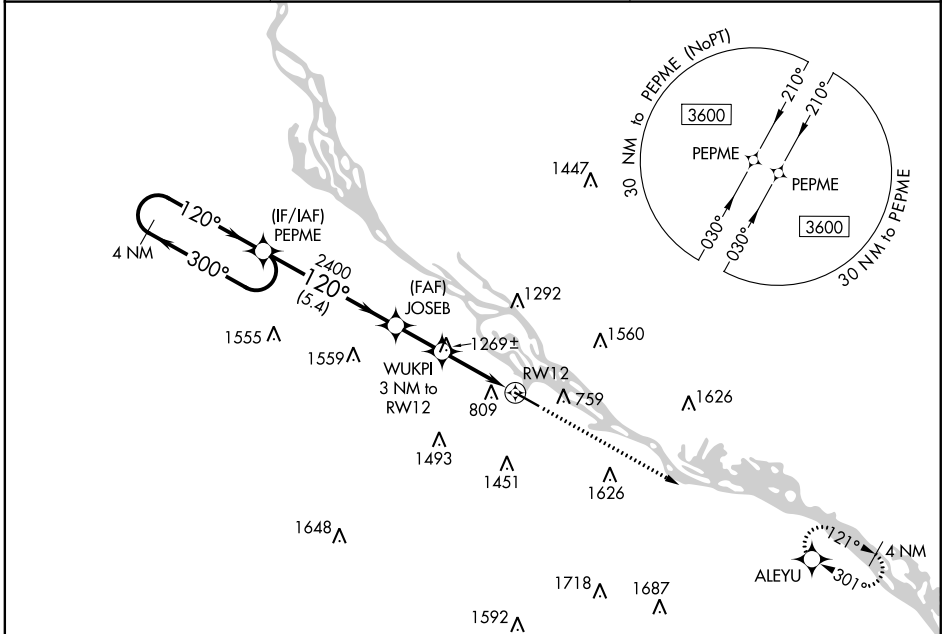
RNAV (GPS) RWY 12

WINONA MUNI-MAX CONRAD FIELD (ON A)

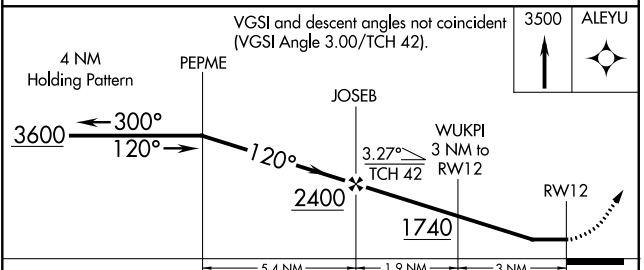
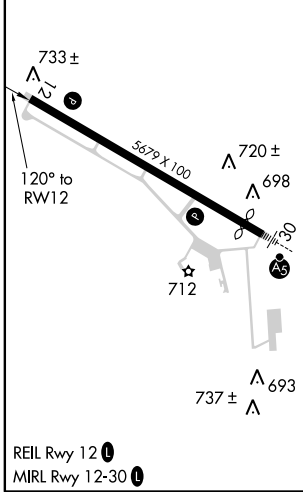
⚠ Rwy 12 helicopter visibility reduction below ¾ NA.
DME/DME RNP-0.3 NA.

MISSED APPROACH: Climb to 3500 direct ALEYU and hold.

AWOS-3 118.075	MINNEAPOLIS CENTER 128.6 363.0	UNICOM 122.8 (CTAF) 0
--------------------------	--	---------------------------------



ELEV 656	D	TDZE 656
----------	----------	----------



CATEGORY	A	B	C	D
LNAV MDA	1520-1 864 (900-1)	1520-1¼ 864 (900-1¼)	1520-2½ 864 (900-2½)	864 (900-2½)
C CIRCLING	1560-1¼ 904 (1000-1¼)	1580-1¼ 924 (1000-1¼)	1780-3 1124 (1200-3)	1980-3 1324 (1400-3)

NC-1, 25 FEB 2021 to 25 MAR 2021

NC-1, 25 FEB 2021 to 25 MAR 2021