

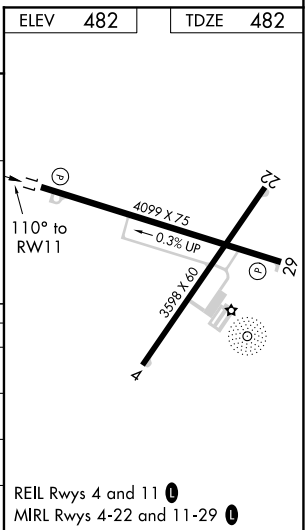
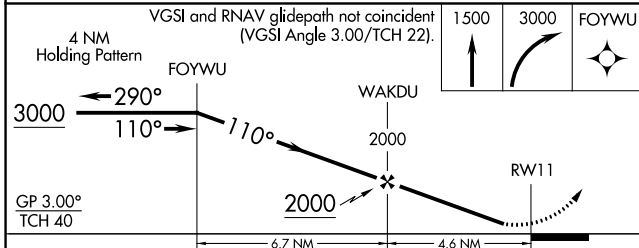
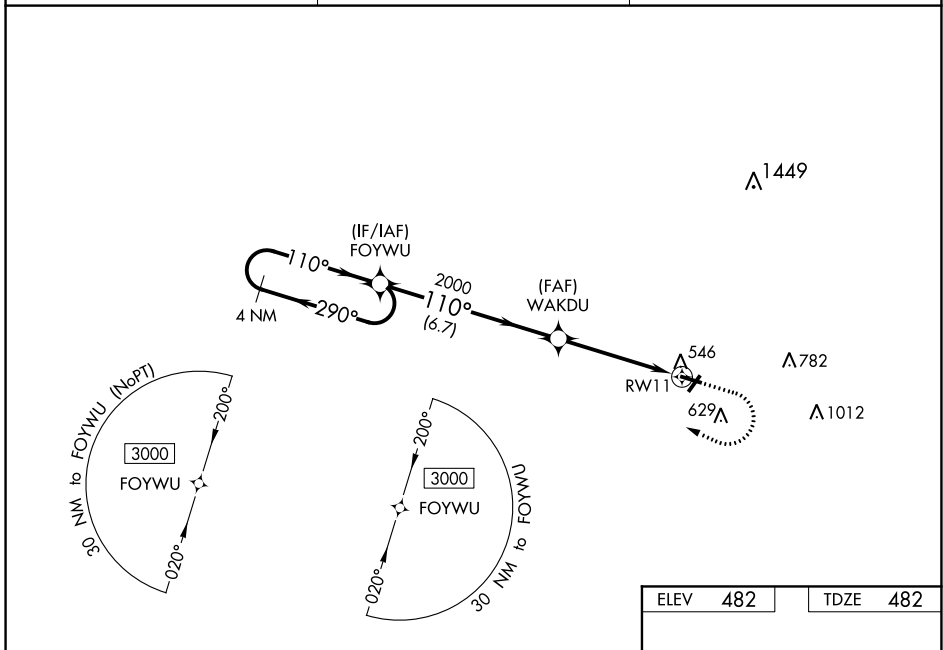
WAAS CH <b>82231</b> <b>W11A</b>	APP CRS <b>110°</b>	Rwy Idg TDZE <b>482</b> Apt Elev <b>482</b>
--	------------------------	---

# RNAV (GPS) RWY 11

OLNEY-NOBLE (OLY)

RNP APCH.	<p><b>▼</b> Baro-VNAV NA when using Evansville altimeter setting. For uncompensated Baro-VNAV systems, LNAV/VNAV NA below -15°C or above 54°C. When local altimeter setting not received, use Evansville altimeter setting and increase all DAs 126 feet, MDAs 140 feet; increase LNAV/VNAV all Cats visibility 1/8 SM, LNAV Cat C/D 3/8 SM and Circling Cat C 1/4 SM and Cat D 1/2 SM.</p>	<p><b>MISSED APPROACH:</b> Climb to 1500 then climbing right turn to 3000 direct FOYWU and hold.</p>
-----------	---	--

AWOS-3 <b>119,275</b>	KANSAS CITY CENTER <b>124.3 269.15</b>	UNICOM <b>123.0 (CTAF) 0</b>
--------------------------	---	---------------------------------



CATEGORY	A	B	C	D
LPV DA	732-1		250 (300-1)	
LNAV/VNAV DA	962-1 5/8		480 (500-1 5/8)	
LNAV MDA	920-1	438 (500-1)	920-1 1/4	438 (500-1 1/4)
<b>C</b> CIRCLING	960-1	478 (500-1)	960-1 1/2 478 (500-1 1/2)	1180-2 1/4 698 (700-2 1/4)

EC-3, 25 FEB 2021 to 25 MAR 2021

EC-3, 25 FEB 2021 to 25 MAR 2021