

| | | | |
|--|------------------------|-----------------------------|---|
| LOC/DME I-TZX 109.55 Chan 32 (Y) | APP CRS 324° | Rwy Idg TDZE Apt Elev | 5498 715 726 |
|--|------------------------|-----------------------------|---|

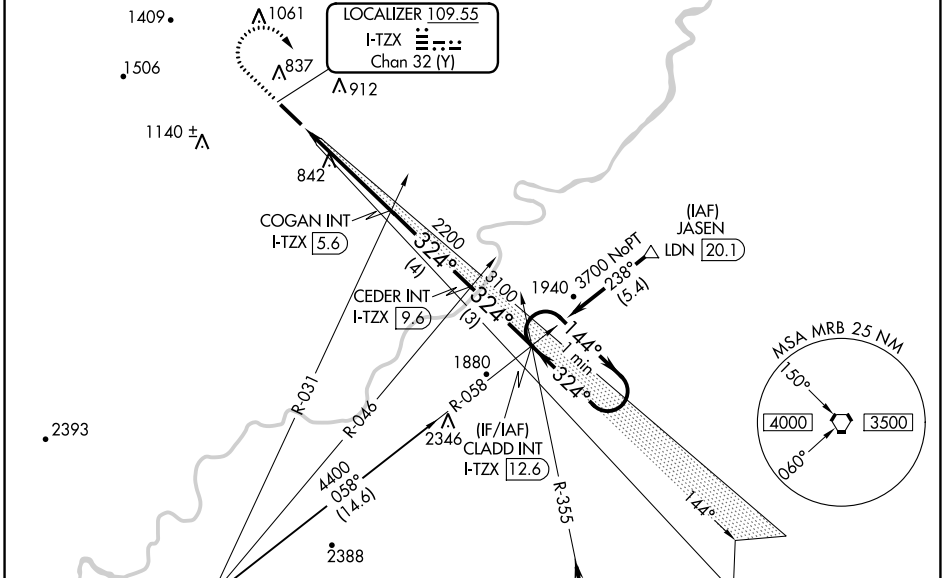
ILS or LOC RWY 32

WINCHESTER RGNL (OKV)

NA Rwy 32 helicopter visibility reduction below 3/4 SM NA. When local altimeter setting not received, use Martinsburg altimeter setting and increase all DA 63 feet and all MDA 80 feet and Circling Cat C visibility 1/4 mile. For inoperative MALSRS, increase S-LOC 32 Cat C visibility to 1 mile. For inoperative MALSRS when using Martinsburg altimeter setting, increase S-ILS 32 All Cats visibility 1/2 mile. VDP NA when using Martinsburg altimeter setting.

MALSRS MISSED APPROACH: Climb to 1400 then climbing right turn to 3700 via heading 160° and I-TZX SE course to CLADD INT/I-TZX 12.6 DME and hold.

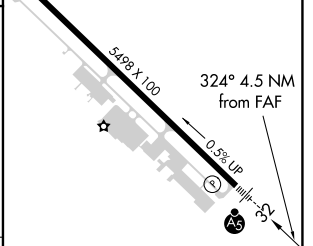
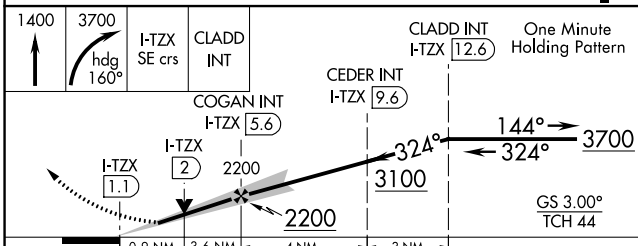
| | | | |
|-------------------------|--|---------------------------|-------------------------------|
| AWOS-3 124.85 | POTOMAC APP CON 120.45 306.925 | CLNC DEL 126.15 | UNICOM 122.7 (CTAF) |
|-------------------------|--|---------------------------|-------------------------------|



NE-3, 25 FEB 2021 to 25 MAR 2021

NE-3, 25 FEB 2021 to 25 MAR 2021

| | |
|----------|----------|
| ELEV 726 | TDZE 715 |
|----------|----------|



| | | | | |
|----------|------------------------|-----------------------|-------------------------------|-------------------------------|
| CATEGORY | A | B | C | D |
| S-ILS 32 | 915-1/2 200 (200-1/2) | | | |
| S-LOC 32 | 1040-1/2 325 (400-1/2) | | 1040-3/4 325 (400-3/4) | |
| CIRCLING | 1180-1 454 (500-1) | 1220-1 494 (500-1) | 1380-1 3/4 654 (700-1 3/4) | 1480-2 1/2 754 (800-2 1/2) |

| | | |
|-------------|-------------------|----------------------------------|
| REIL Rwy 14 | HIRL Rwy 14-32 | FAF to MAP 4.5 NM |
| Knots | 60 90 120 150 180 | Min:Sec 4:30 3:00 2:15 1:48 1:30 |