

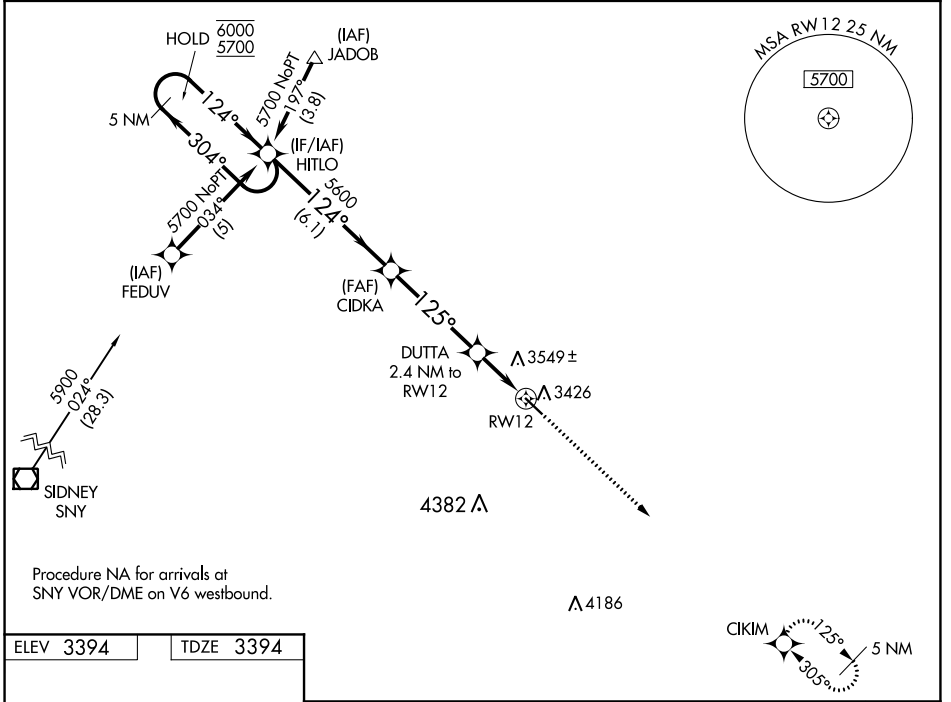
WAAS CH <b>99708</b> <b>W12A</b>	APP CRS <b>125°</b>	Rwy ldg <b>4699</b> TDZE <b>3394</b> Apt Elev <b>3394</b>
--	------------------------	---

# RNAV (GPS) RWY 12

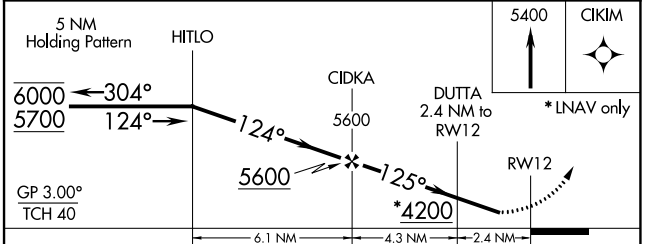
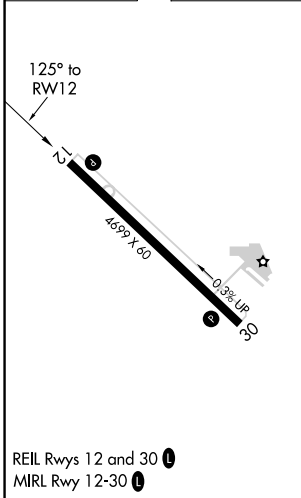
GARDEN COUNTY/KING RHILEY FIELD (OKS)

RNP APCH.	Baro-VNAV NA. Rwy 12 helicopter visibility reduction below ¾ SM NA. Use Ogallala altimeter setting.	MISSED APPROACH: Climb to 5400 direct CIKIM and hold.
-----------	---	---

OGA AWOS-3 <b>121.275</b>	DENVER CENTER <b>118.475 225.4</b>	UNICOM <b>122.8 (CTAF) 0</b>
------------------------------	---------------------------------------	---------------------------------



ELEV 3394	TDZE 3394
-----------	-----------



CATEGORY	A	B	C	D
LPV DA	3762-1¼	368 (400-1¼)		NA
LNAV/VNAV DA	3882-1¾	488 (500-1¾)		NA
LNAV MDA	3980-1	586 (600-1)		NA
CIRCLING	3940-1 546 (600-1)	3980-1 586 (600-1)		NA

NC-2, 25 FEB 2021 to 25 MAR 2021

NC-2, 25 FEB 2021 to 25 MAR 2021