

VOR IRW <b>114.1</b> Chan <b>88</b>	APP CRS <b>190°</b>	Rwy Idg TDZE <b>1287</b> Apt Elev <b>1296</b>	<b>9803</b>
---	------------------------	---	-------------

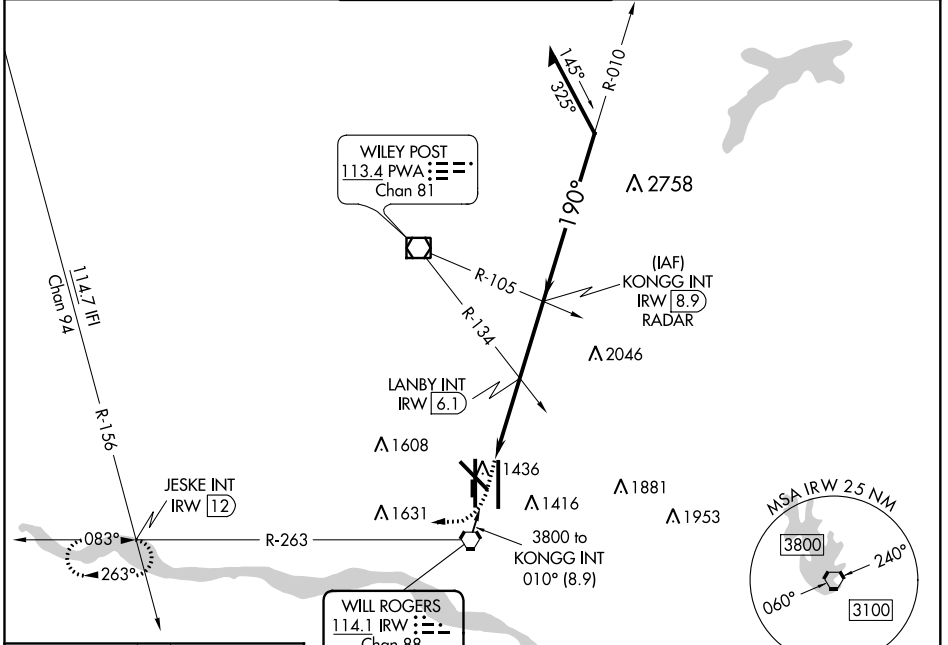
# VOR RWY 17L

WILL ROGERS WORLD (OKC)

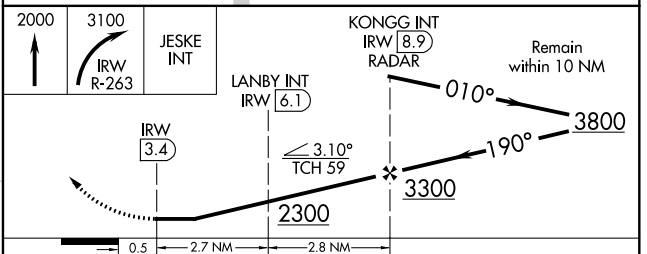
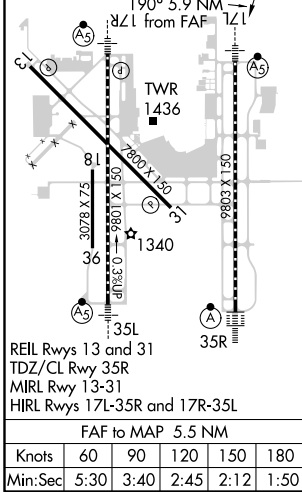
**⚠** Cat E procedure turn NA. Inoperative table does not apply to S-17L all categories and LANBY FIX minimums S-17L Cat E; increase LANBY FIX ASR minimums Cat D visibility to RVR 6000 for inoperative MALSRS.

**MALSRS** MISSED APPROACH: Climb to 2000 then climbing right turn to 3100 via IRW VORTAC R-263 to JESKE INT/12 DME and hold.

D-ATIS <b>125.85</b>	OKE CITY APP CON <b>124.6 266.8</b>	ROGERS TOWER <b>119.35 269.45</b>	GND CON <b>121.9 348.6</b>	CLNC DEL <b>124.35</b>
-------------------------	--	--------------------------------------	-------------------------------	---------------------------



ELEV 1296	<b>D</b> TDZE 1287
-----------	--------------------



LANBY FIX MINIMUMS					
S-17L	1680/24	393 (400-½)	1680/50	393 (400-1)	1680-1½
<b>C</b> CIRCLING	1760-1	464 (500-1)	1960-1¾ 664 (700-1¾)	2000-2¼ 704 (800-2¼)	2240-3 944 (1000-3)

SC-1, 25 FEB 2021 to 25 MAR 2021

SC-1, 25 FEB 2021 to 25 MAR 2021