

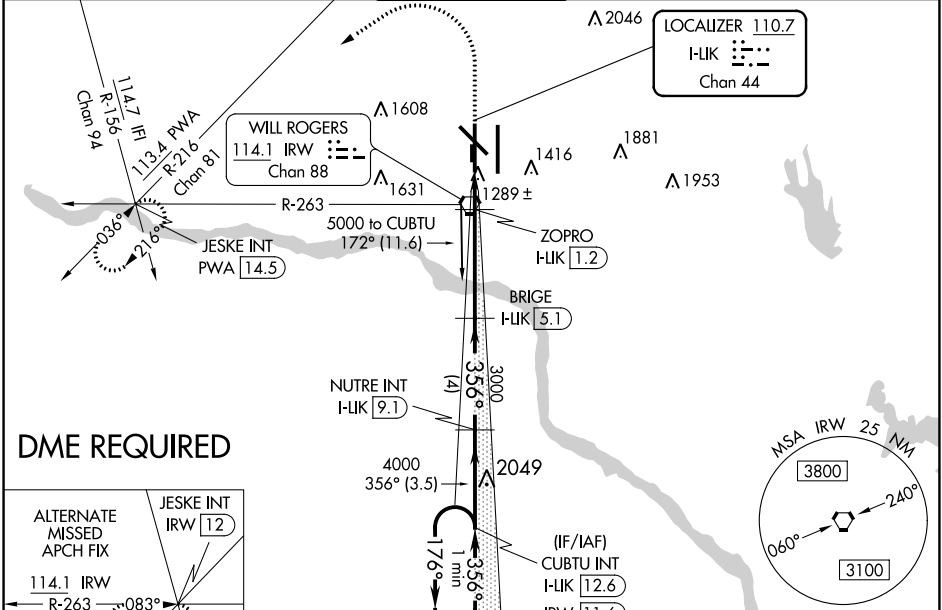
LOC/DME I-LIK 110.7 Chan 44	APP CRS 356°	Rwy Idg TDZE Apt Elev 9800 1276 1296
--	------------------------	--

ILS or LOC RWY 35L

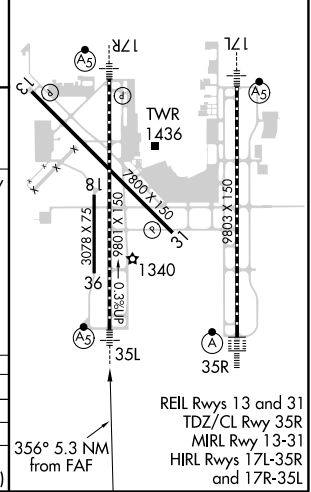
WILL ROGERS WORLD (OKC)

<p>Simultaneous approach authorized. For inop ALS, increase S-ILS 35L Cat E visibility to RVR 4000 and S-LOC 35L all Cats visibility to RVR 5500. DME required. **RVR 1800 authorized with use of FD or AP or HUD to DA.</p>	<p>MALS R-ASR</p>	<p>MISSED APPROACH: Climb to 2000 then climbing left turn to 3000 on heading 291° and on PWA VOR/DME R-216 to JESKE INT/PWA 14.5 DME and hold.</p>

D-ATIS 125.85	OKE CITY APP CON 124.6 266.8	ROGERS TOWER 119.35 269.45	GND CON 121.9 348.6	CLNC DEL 124.35
-------------------------	--	--------------------------------------	-------------------------------	---------------------------



ELEV 1296	D TDZE 1276
-----------	--------------------



CATEGORY	A	B	C	D	E
S-ILS 35L **	1476/24 200 (200-½)				
S-LOC 35L	1640/24	364 (400-½)	1640/35 364 (400-¾)		
CIRCLING	1740-1 444 (500-1)	1760-1 464 (500-1)	1960-1¾ 664 (700-1¾)	2000-2¼ 704 (800-2¼)	2240-3 944 (1000-3)

SC-1, 25 FEB 2021 to 25 MAR 2021

SC-1, 25 FEB 2021 to 25 MAR 2021